

SAN TAN HEIGHTS
CAPRI



APPROX. SQUARE FEET: 1,550
STORIES: 1
BEDROOMS: 3
GARAGE: 2-car
PLAN NUMBER: P906

The ranch-style Capri plan features three spacious bedrooms, including a sophisticated master suite with an oversized walk-in closet and private bath with soaking tub. A central laundry, spacious kitchen with a walk-in pantry and abundant counterspace, inviting great room and convenient 2-car garage complete the home. Options for personalization include a kitchen island and a private study in lieu of the third bedroom.

Available elevation:



Elevation A



Elevation B



Elevation C

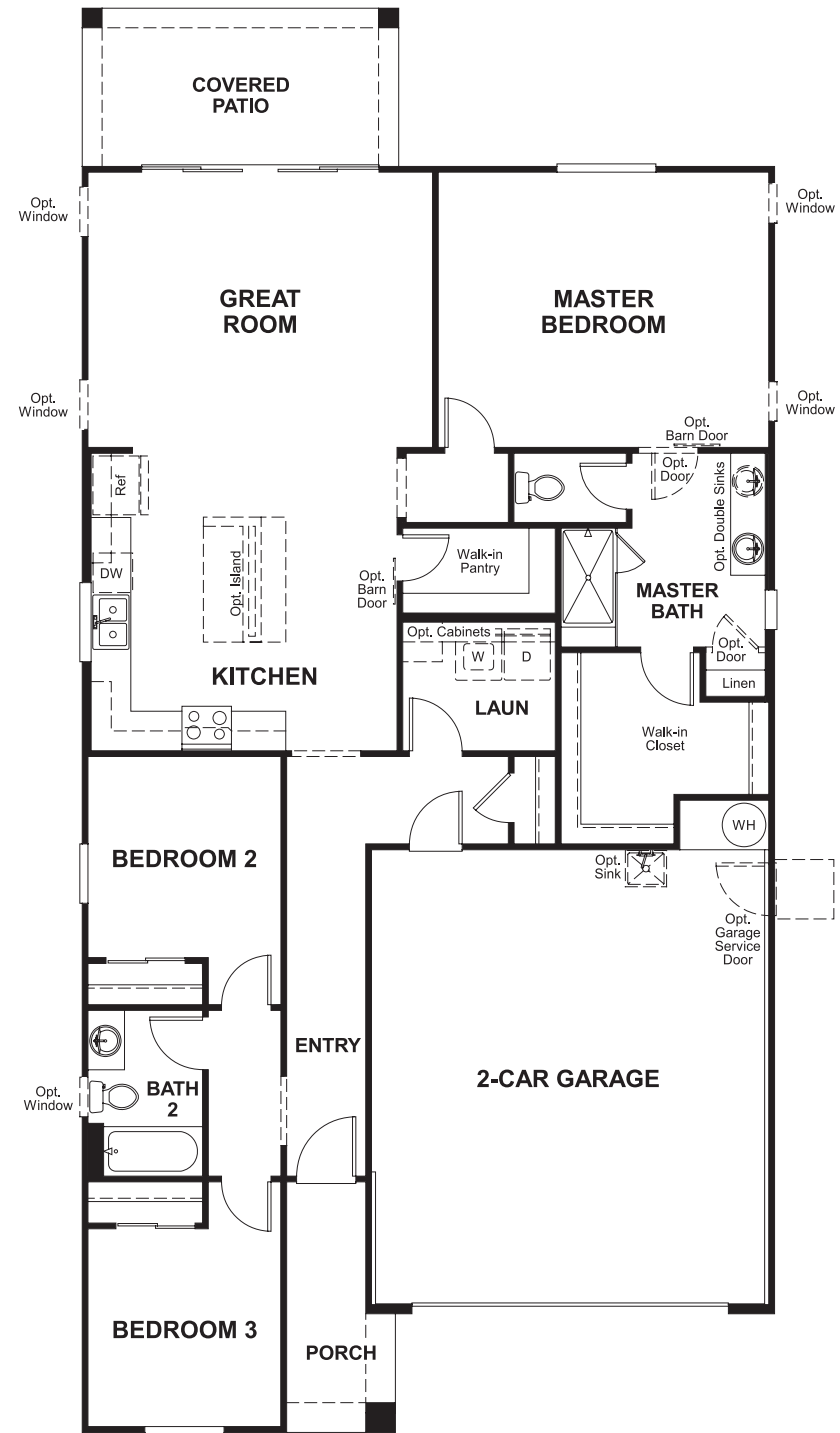
COMMUNITY LOCATION 33357 North Mildred Lane
Queen Creek, AZ 85142
877-444-1485

HOME GALLERY 16427 North Scottsdale Road, Suite 175
Scottsdale, AZ 85254
877-444-1485

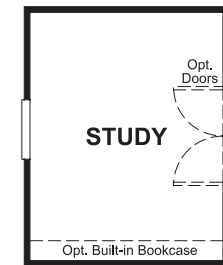
RICHMONDAMERICAN.COM/SEASONS



FLOOR PLAN
MAIN FLOOR



FLOOR PLAN
MAIN FLOOR OPTIONS



OPT. STUDY

**THIS PLAN'S PROJECTED
HERS® INDEX = 65***
Projected Rating Based on Plans – Field Confirmation Required

How does this floor plan rate?
Take a look: **100** = Standard new home+ **130** = Typical resale home**
The lower the number, the better! Refer to the RESNET® HERS index brochure or go to www.RESNET.us for details.

What's a HERS® Index? HERS stands for Home Energy Rating System, a system created by RESNET® to measure home energy efficiency.^
A Projected HERS index or rating is a computer simulation performed prior to construction by a third-party HERS rater using RESNET-accredited rating software, rated feature and specification data derived from home plans, features and specifications, and other data selected or assumed by the rater. The projected HERS index is approximate and is subject to change without notice. Actual results will vary.

*This information is presented for education purposes only. The HERS index for a confirmed rating will be determined by a third-party HERS rater based on data gathered from on-site observations and, if required, testing of rated features for a home as featured, optioned, located, oriented and/or built.
+Standard new home is based on the RESNET® Reference Home definition with a HERS® index of 100 (based on the 2006 International Energy Conservation Code).
**Typical resale home is based on the U.S. Department of Energy definition with a HERS® index of 130.

^RESNET® has developed the HERS® index to indicate the comparative efficiencies of homes. It is no guarantee that energy efficiencies will be achieved.