

The Preserve at Laguna Ridge  
**CATHERINE**



**Elevation B**

**Available elevations:**



**Elevation B**



**Elevation D**

**Approx. square feet:** 2,850

**Stories:** 1

**Bedrooms:** 3 - 5

**Garage:** 3-car

**Plan Number:** N643

The Catherine offers all the appeal of a ranch plan—a main-floor master suite and other essential living spaces—plus an extra bonus room upstairs for entertaining. It includes a great room, an open kitchen with a walk-in pantry and nook, three inviting bedrooms, a convenient laundry room and a two-car garage with a third, tandem space for extra vehicle storage or a workshop. Don't need the extra garage space? Add another bedroom and bath, or a study. Additional opportunities to personalize: a gourmet or deluxe kitchen, covered patio, multi-slide doors and deluxe bath options.

**COMMUNITY LOCATION**

9996 Avocado Way  
Elk Grove, CA 95758

**HOME GALLERY**

One Harbor Center Suite 150  
Suisun City, CA 94585  
707-416-2800



**COMMUNITY LOCATION**

9996 Avocado Way  
Elk Grove, CA 95758

**HOME GALLERY**

One Harbor Center Suite 150  
Suisun City, CA 94585  
707-416-2800



The Preserve at Laguna Ridge  
**CATHERINE**

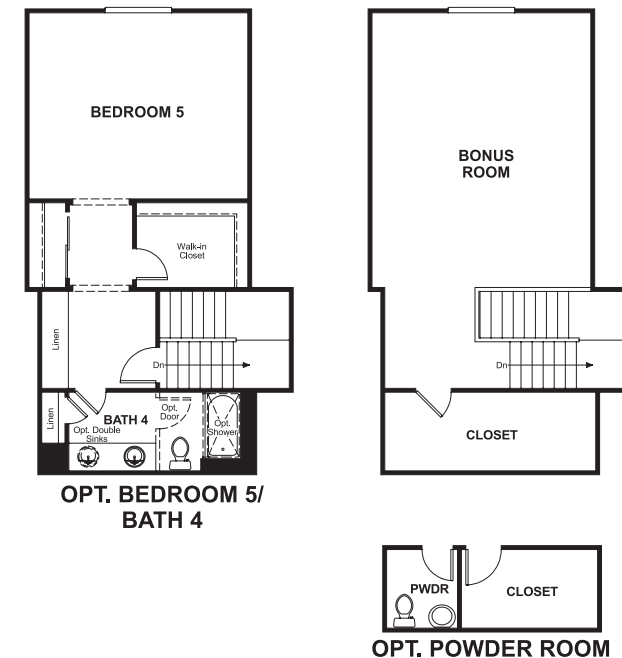
**Approx. square feet: 2,850**  
**Stories: 1**  
**Bedrooms: 3 - 5**

**Garage: 3-car**  
**Plan Number: N643**

**Floor Plan**  
Main Floor



**Floor Plan**  
Second Floor



**THIS PLAN'S PROJECTED**  
**HERS® INDEX = 61** \*  
Projected Rating Based on Plans – Field Confirmation Required

**How does this floor plan rate?**  
Take a look: **100** = Standard new home\* **130** = Typical resale home\*\*  
The lower the number, the better! Refer to the RESNET® HERS index brochure or go to [www.RESNET.us](http://www.RESNET.us) for details.

\*This information is presented for education purposes only. The HERS index for a confirmed rating will be determined by a third-party HERS rater based on data gathered from on-site observations and, if required, testing of rated features for a home as featured, optioned, located, oriented and/or built.  
+Standard new home is based on the RESNET® Reference Home definition with a HERS® index of 100 (based on the 2006 International Energy Conservation Code).  
\*\*Typical resale home is based on the U.S. Department of Energy definition with a HERS® index of 130.

**What's a HERS® Index?** HERS stands for Home Energy Rating System, a system created by RESNET® to measure home energy efficiency. A Projected HERS index or rating is a computer simulation performed prior to construction by a third-party HERS rater using RESNET-accredited rating software, rated feature and specification data derived from home plans, features and specifications, and other data selected or assumed by the rater. The projected HERS index is approximate and is subject to change without notice. Actual results will vary.

^RESNET® has developed the HERS® index to indicate the comparative efficiencies of homes. It is no guarantee that energy efficiencies will be achieved.