

Huntington at Mountain House
CELINE



Elevation A

Approx. square feet: 2,900
Stories: 2
Bedrooms: 3 - 5
Garage: 2- to 3-car
Plan Number: N661

The Celine floor plan offers inviting spaces to entertain, from the covered patio and upstairs bonus room, to the open great room, dining room and kitchen with breakfast-bar island. It has four bedrooms—including one on the main floor with its own full bath—but you may opt for a fifth upstairs. Don't miss the master bath's double sinks and dual walk-in closets! Gourmet options and a main-floor study are also available.

Available elevations:



Elevation A



Elevation C



Elevation D

COMMUNITY LOCATION

437 West Morgan Court
 Mountain House, CA 95391
 209-650-7022

HOME GALLERY

One Harbor Center, Suite 150
 Suisun City, CA 94585
 707-389-7016



COMMUNITY LOCATION

437 West Morgan Court
 Mountain House, CA 95391
 209-650-7022

HOME GALLERY

One Harbor Center, Suite 150
 Suisun City, CA 94585
 707-389-7016

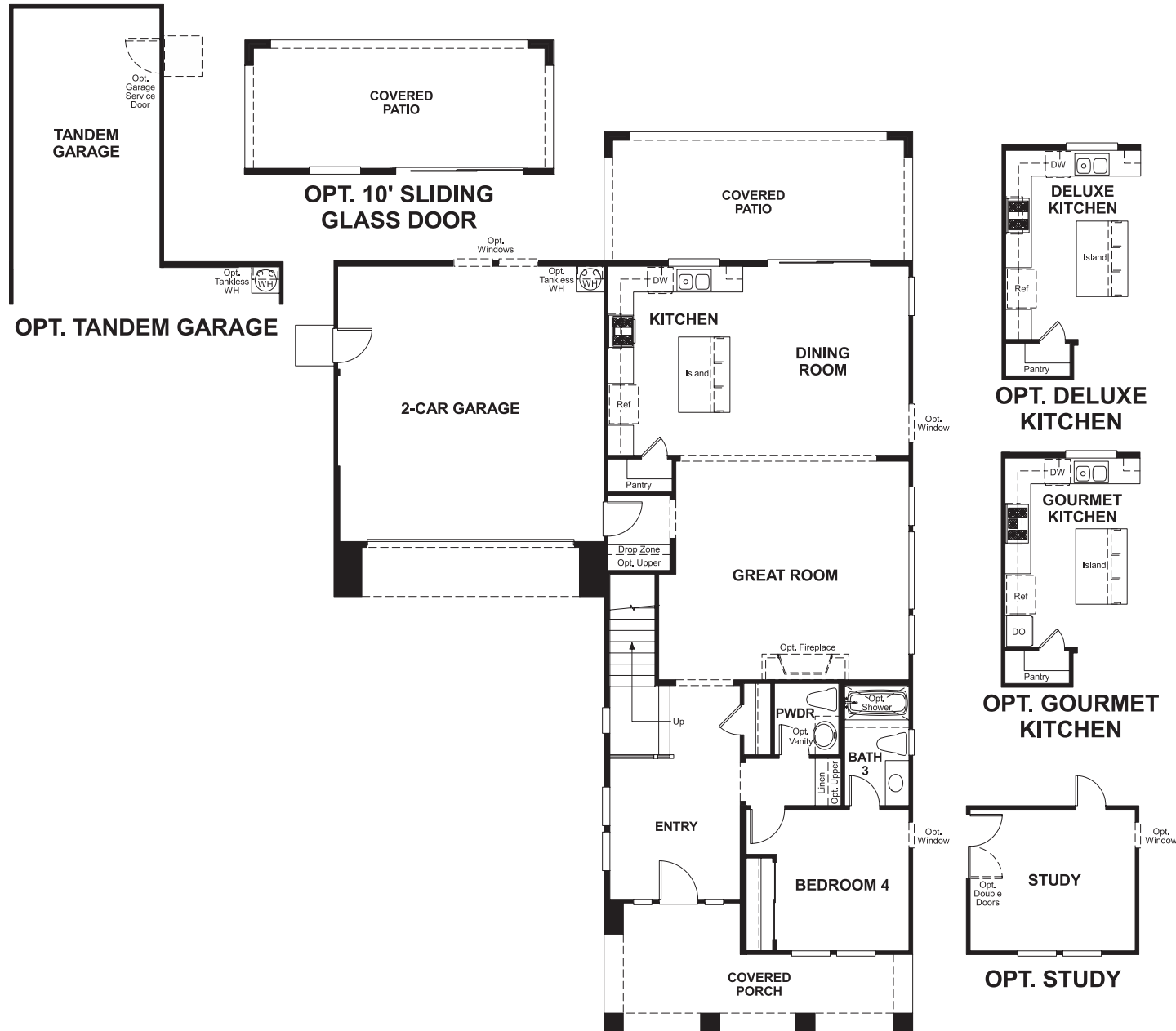


Huntington at Mountain House
CELINE

Approx. square feet: 2,900
Stories: 2
Bedrooms: 3 - 5

Garage: 2- to 3-car
Plan Number: N661

Floor Plan
Main Floor



Floor Plan
Second Floor



**THIS PLAN'S PROJECTED
HERS® INDEX = 65***
Projected Rating Based on Plans – Field Confirmation Required

How does this floor plan rate?
Take a look: **100** = Standard new home* **130** = Typical resale home**
The lower the number, the better! Refer to the RESNET® HERS index brochure or go to www.RESNET.us for details.

What's a HERS® Index? HERS stands for Home Energy Rating System, a system created by RESNET® to measure home energy efficiency.[^]
A Projected HERS index or rating is a computer simulation performed prior to construction by a third-party HERS rater using RESNET-accredited rating software, rated feature and specification data derived from home plans, features and specifications, and other data selected or assumed by the rater. The projected HERS index is approximate and is subject to change without notice. Actual results will vary.

*This information is presented for education purposes only. The HERS index for a confirmed rating will be determined by a third-party HERS rater based on data gathered from on-site observations and, if required, testing of rated features for a home as featured, optioned, located, oriented and/or built.
+Standard new home is based on the RESNET® Reference Home definition with a HERS® index of 100 (based on the 2006 International Energy Conservation Code).
++Typical resale home is based on the U.S. Department of Energy definition with a HERS® index of 130.

[^]RESNET® has developed the HERS® index to indicate the comparative efficiencies of homes. It is no guarantee that energy efficiencies will be achieved.