

GLENNWILDE
CITRINE



APPROX. SQUARE FEET: 1,850
STORIES: 2
BEDROOMS: 3 - 4
GARAGE: 2-car
PLAN NUMBER: P904

Imagine your life in this two-story home. Breakfast at the spacious kitchen island or in the nearby dining room. Spend the afternoon in your quiet study or on your covered patio. Host a movie night in the inviting great room. At the end of the day, retreat upstairs to the master suite, complete with a roomy walk-in closet and private bath. Upstairs, you'll also enjoy two additional bedrooms, a convenient laundry and another full bath. A main-floor bedroom with full bath is also available.

Available elevation:



Elevation A



Elevation B



Elevation C

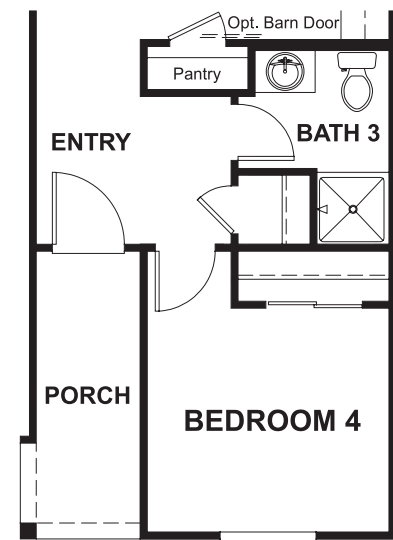
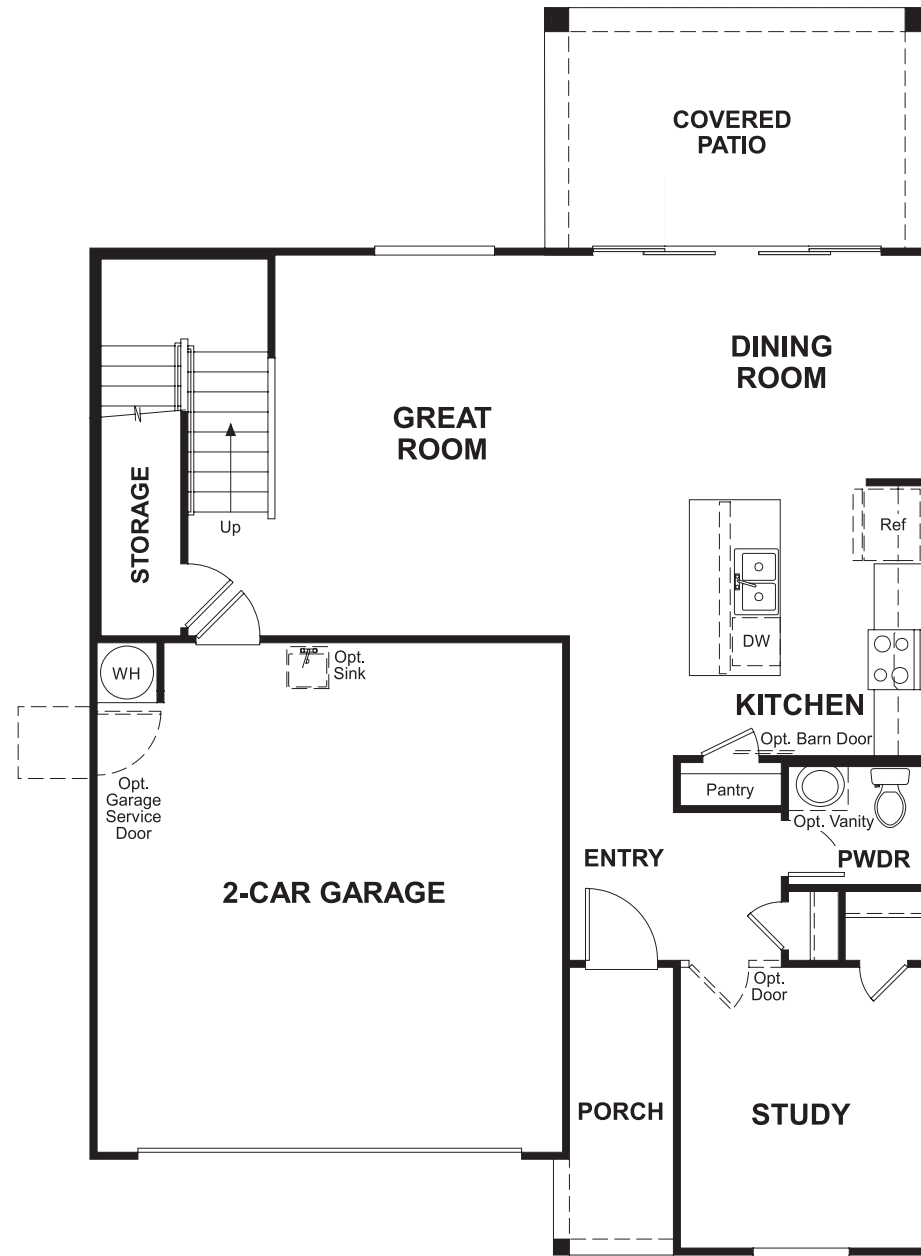
COMMUNITY LOCATION
19376 North Crestview Lane
Maricopa, AZ 85138
520-316-4355



HOME GALLERY
16427 North Scottsdale Road, Suite 175
Scottsdale, AZ 85254
877-444-1485

RICHMONDAMERICAN.COM/SEASONS

FLOOR PLAN
MAIN FLOOR



OPT. BEDROOM 4/
BATH 3

FLOOR PLAN
SECOND FLOOR

