

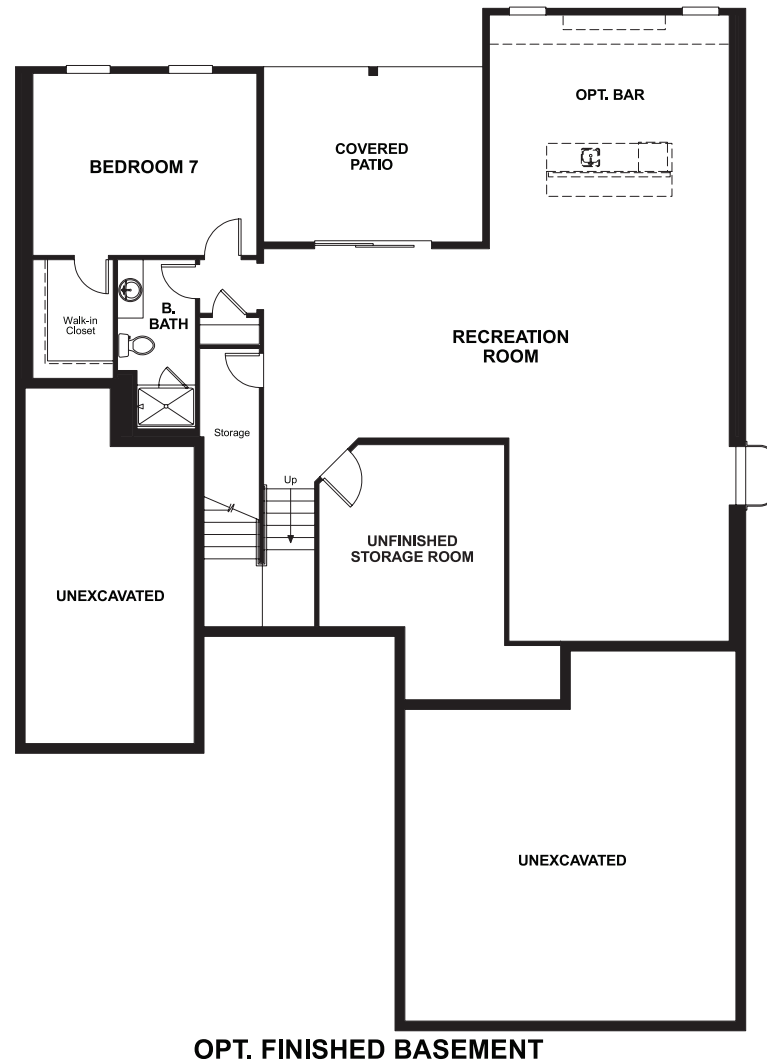
Maple Hills
DALEY

Approx. square feet: 3,300
Stories: 2
Bedrooms: 5 - 7

Garage: 3-car
Plan Number: W600

Maple Hills
DALEY

Floor Plan
Basement



OPT. FINISHED BASEMENT



Elevation C

Available elevations:



Elevation C



Elevation D



Elevation E

Approx. square feet: 3,300
Stories: 2
Bedrooms: 5 - 7
Garage: 3-car
Plan Number: W600

The main floor of the Daley plan offers an open dining room and an expansive great room connected by a gourmet kitchen with center island and walk-in pantry. You'll also appreciate a main-floor bedroom with full bath, quiet study, convenient mudroom, two separate garages and a relaxing covered patio. Upstairs features a large loft and four comfortable bedrooms, including an elegant master suite with optional deluxe bath. Options: finished basement with bedroom, bath, rec room and wet bar.

COMMUNITY LOCATION
25806 205TH Place Southeast
Covington, WA 98042
253-693-4801

HOME GALLERY
20829 72ND Avenue South, Suite 115
Kent, WA 98032
253-446-7277



COMMUNITY LOCATION
25806 205TH Place Southeast
Covington, WA 98042
253-693-4801

HOME GALLERY
20829 72ND Avenue South, Suite 115
Kent, WA 98032
253-446-7277

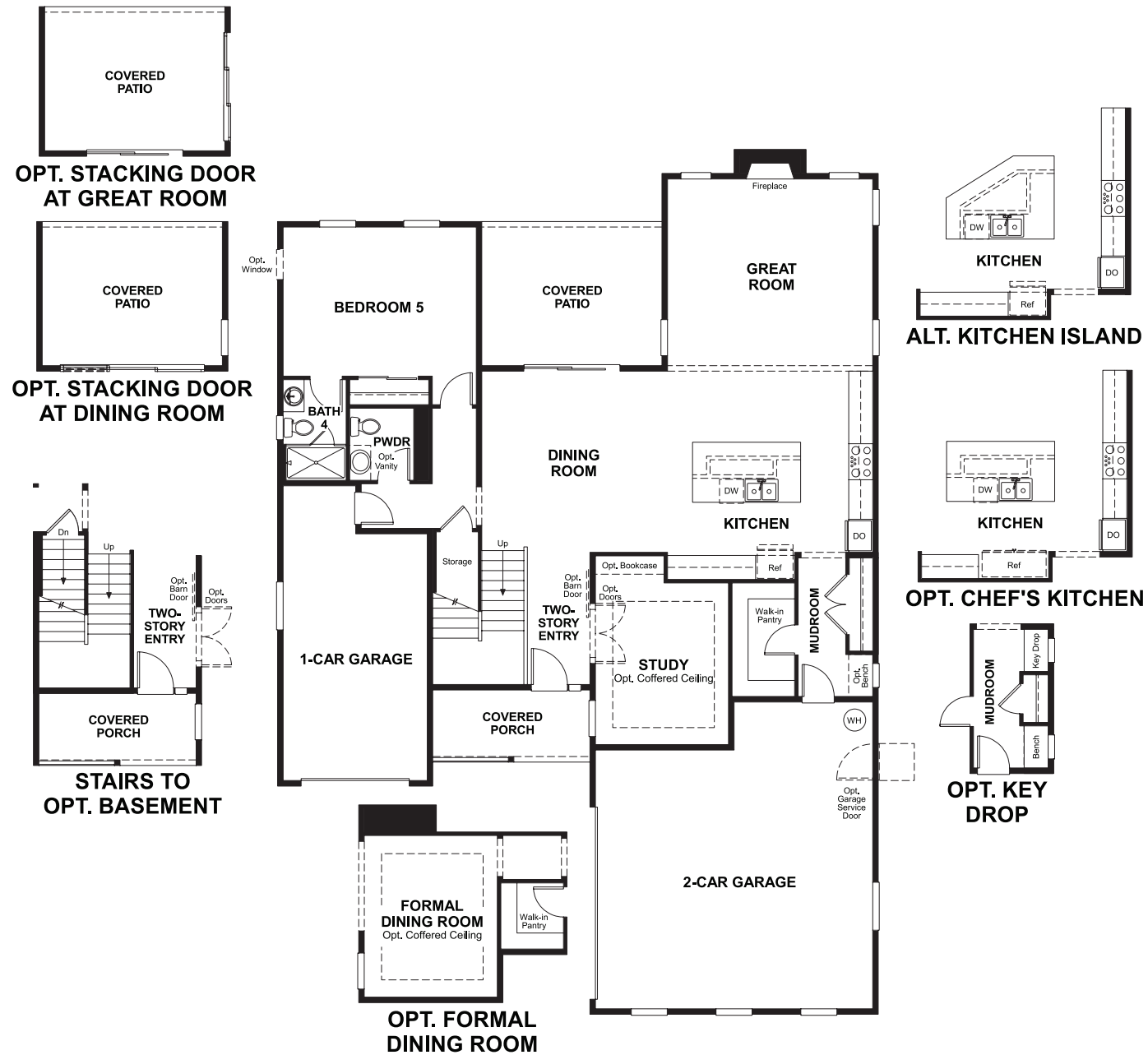


Maple Hills
DALEY

Approx. square feet: 3,300
Stories: 2
Bedrooms: 5 - 7

Garage: 3-car
Plan Number: W600

Floor Plan
Main Floor



Floor Plan
Second Floor



THIS PLAN'S PROJECTED HERS® INDEX = 66*
Projected Rating Based on Plans – Field Confirmation Required

How does this floor plan rate?
Take a look: 100 = Standard new home* 130 = Typical resale home**
The lower the number, the better! Refer to the RESNET® HERS index brochure or go to www.RESNET.us for details.

What's a HERS® Index? HERS stands for Home Energy Rating System, a system created by RESNET® to measure home energy efficiency. A Projected HERS index or rating is a computer simulation performed prior to construction by a third-party HERS rater using RESNET-accredited rating software, rated feature and specification data derived from home plans, features and specifications, and other data selected or assumed by the rater. The projected HERS index is approximate and is subject to change without notice. Actual results will vary.

*This information is presented for education purposes only. The HERS index for a confirmed rating will be determined by a third-party HERS rater based on data gathered from on-site observations and, if required, testing of rated features for a home as featured, optioned, located, oriented and/or built.
+Standard new home is based on the RESNET® Reference Home definition with a HERS® index of 100 (based on the 2006 International Energy Conservation Code).
++Typical resale home is based on the U.S. Department of Energy definition with a HERS® index of 130.

^RESNET® has developed the HERS® index to indicate the comparative efficiencies of homes. It is no guarantee that energy efficiencies will be achieved.