

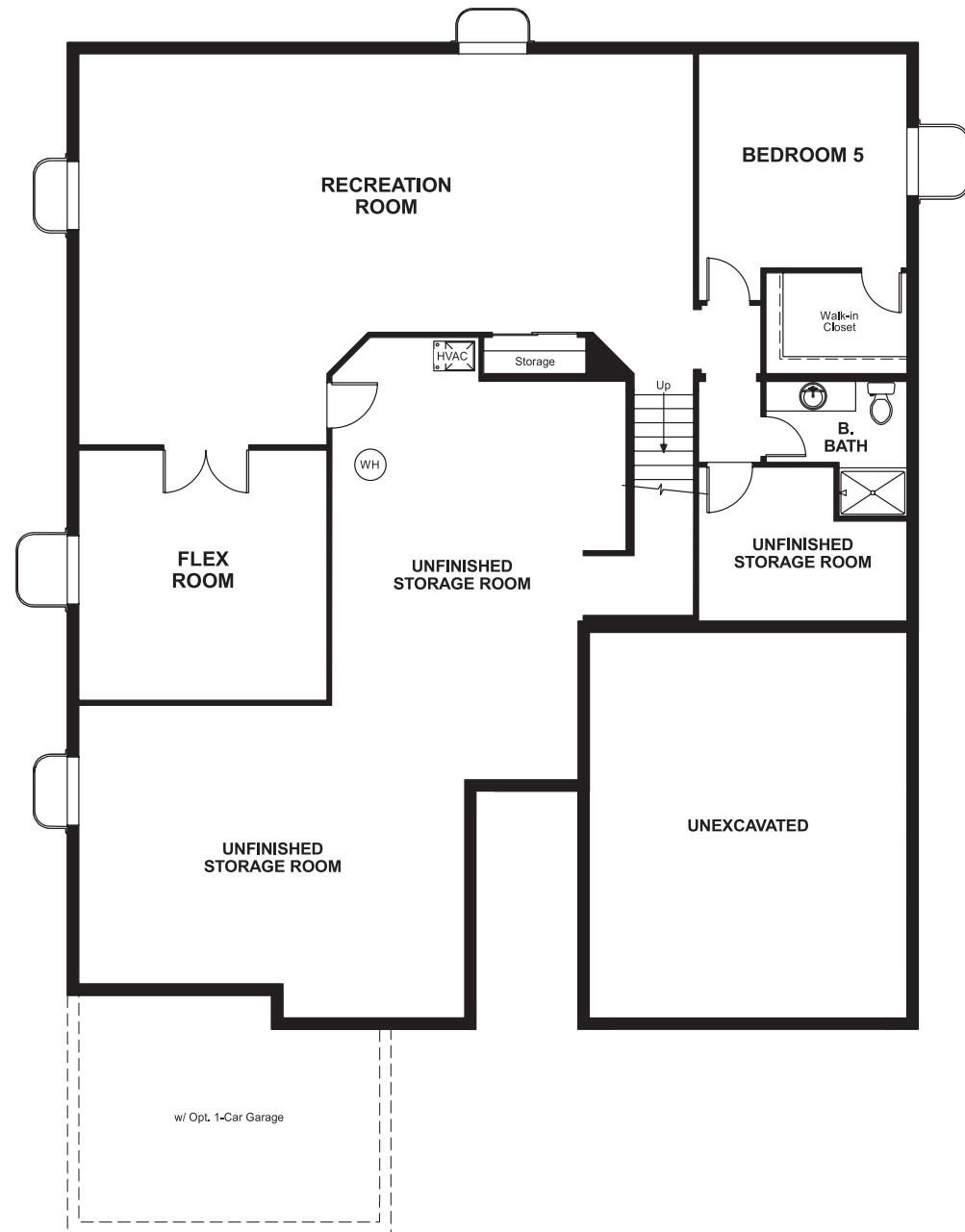
Wyndham Hill
DANIEL

Approx. square feet: 2,300
Stories: 1
Bedrooms: 3 - 5

Garage: 2- to 3-car
Plan Number: D21D

Wyndham Hill
DANIEL

Floor Plan
Basement



OPT. FINISHED BASEMENT



Elevation A

Available elevations:



Elevation A



Elevation B



Elevation C

Approx. square feet: 2,300
Stories: 1
Bedrooms: 3 - 5
Garage: 2- to 3-car
Plan Number: D21D

This stylish ranch features an open kitchen, great room with optional fireplace and study that can be optioned as a fourth bedroom. Enjoy a private master bedroom set away from the other bedrooms with walk-in closet and the ability to enhance with a deluxe master bath. A full unfinished basement is included.

COMMUNITY LOCATION
6322 Walnut Grove Street
Frederick, CO 80515
303-575-6025

HOME GALLERY
8000 East Belleview Avenue, Suite C12
Greenwood Village, CO 80111
303-850-5750



COMMUNITY LOCATION
6322 Walnut Grove Street
Frederick, CO 80515
303-575-6025

HOME GALLERY
8000 East Belleview Avenue, Suite C12
Greenwood Village, CO 80111
303-850-5750

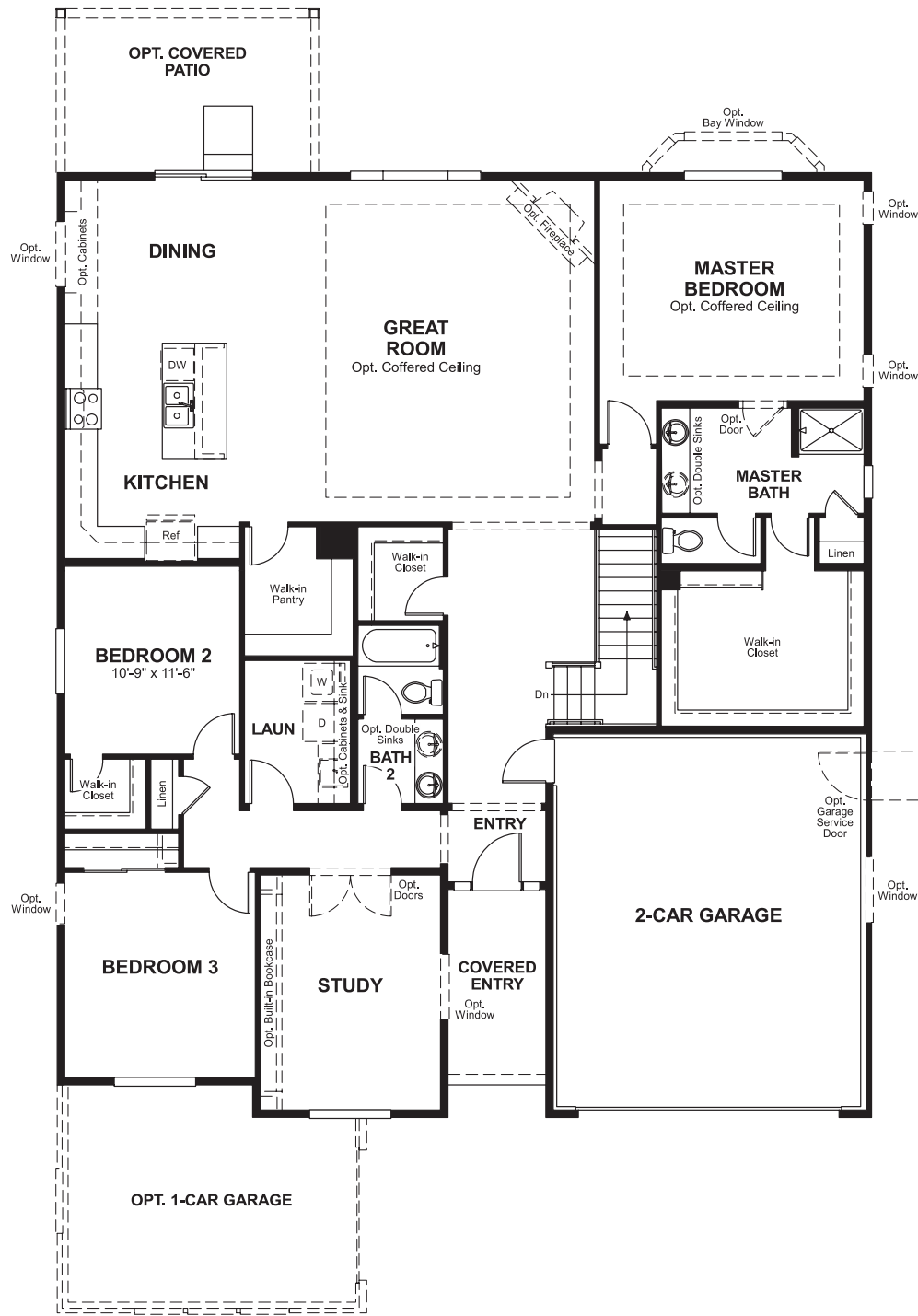


Wyndham Hill
DANIEL

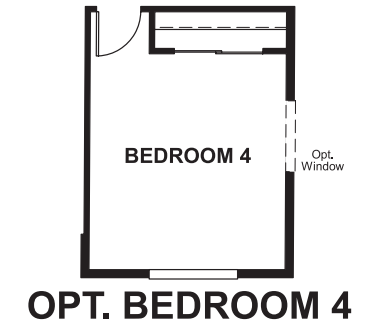
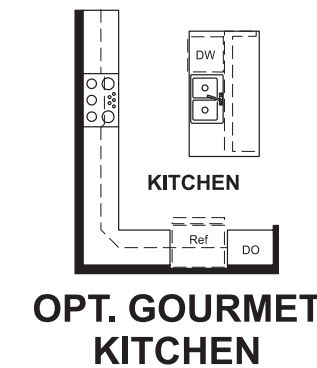
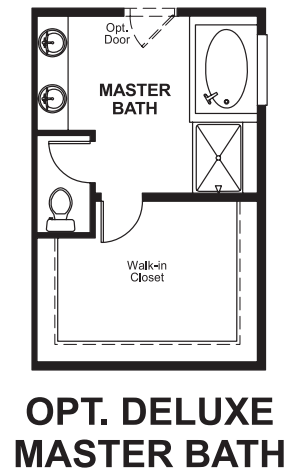
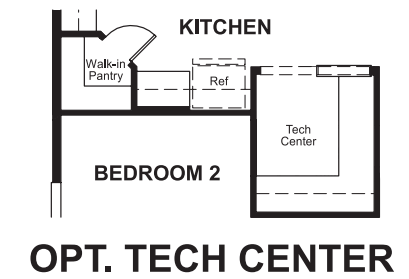
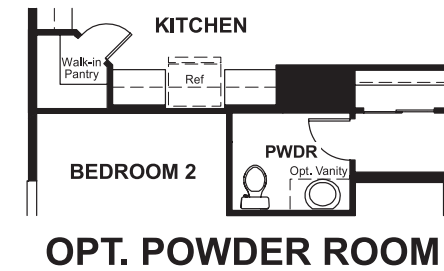
Approx. square feet: 2,300
Stories: 1
Bedrooms: 3 - 5

Garage: 2- to 3-car
Plan Number: D21D

Floor Plan
Main Floor



Floor Plan
Main Floor Options



THIS PLAN'S PROJECTED HERS® INDEX = 54*
Projected Rating Based on Plans – Field Confirmation Required

How does this floor plan rate?
Take a look: **100** = Standard new home* **130** = Typical resale home**
The lower the number, the better! Refer to the RESNET® HERS index brochure or go to www.RESNET.us for details.

What's a HERS® Index? HERS stands for Home Energy Rating System, a system created by RESNET® to measure home energy efficiency.[^]
A Projected HERS index or rating is a computer simulation performed prior to construction by a third-party HERS rater using RESNET-accredited rating software, rated feature and specification data derived from home plans, features and specifications, and other data selected or assumed by the rater. The projected HERS index is approximate and is subject to change without notice. Actual results will vary.

*This information is presented for education purposes only. The HERS index for a confirmed rating will be determined by a third-party HERS rater based on data gathered from on-site observations and, if required, testing of rated features for a home as featured, optioned, located, oriented and/or built.
+Standard new home is based on the RESNET® Reference Home definition with a HERS® index of 100 (based on the 2006 International Energy Conservation Code).
**Typical resale home is based on the U.S. Department of Energy definition with a HERS® index of 130.

[^]RESNET® has developed the HERS® index to indicate the comparative efficiencies of homes. It is no guarantee that energy efficiencies will be achieved.