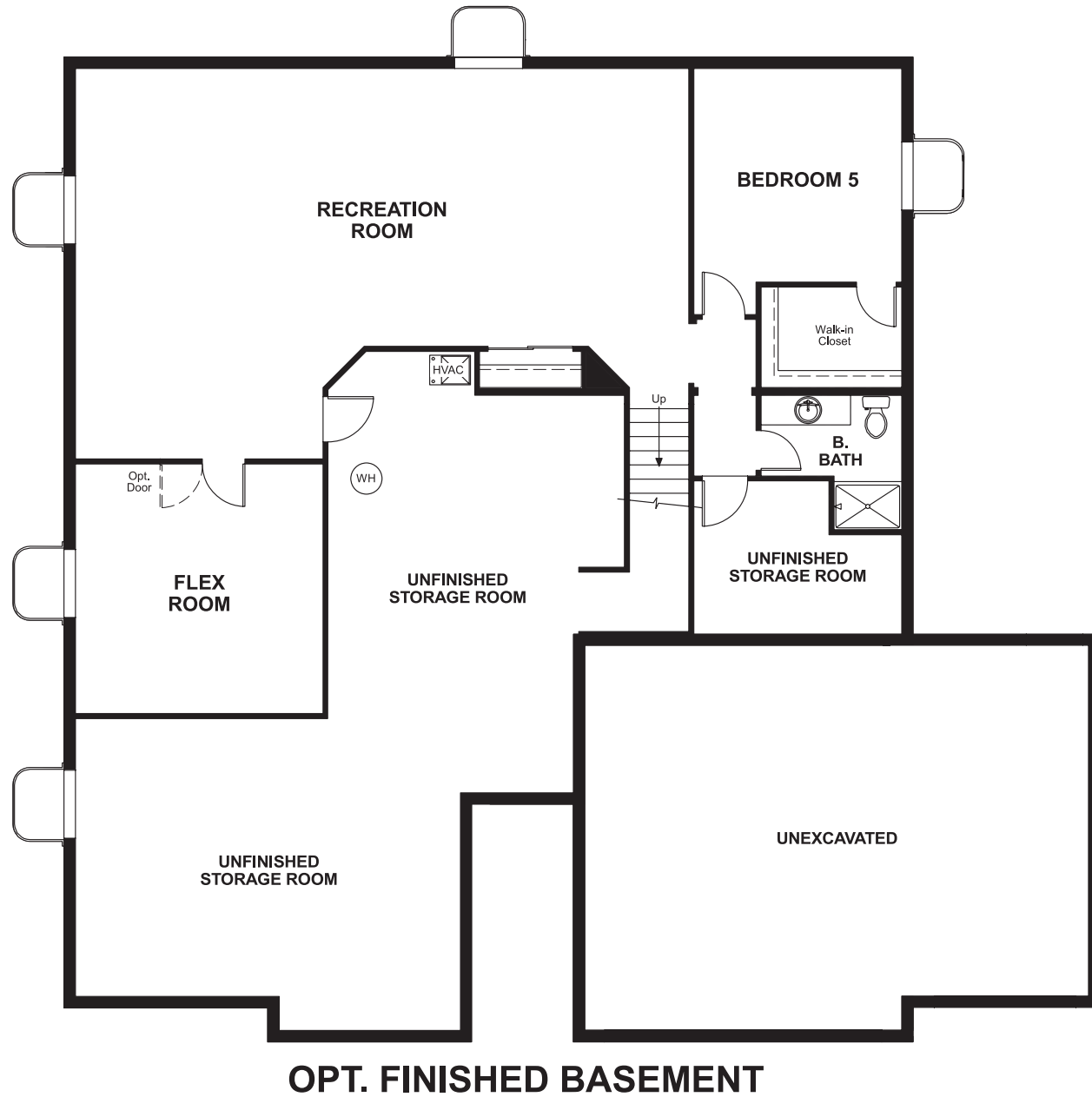


Jackson Creek
DANIEL

Approx. square feet: 2,300
Stories: 1
Bedrooms: 3 - 4

Garage: 3-car
Plan Number: R232

Floor Plan
Basement



COMMUNITY LOCATION
16457 Curled Oak Drive
Monument, CO 80132
719-277-9009

HOME GALLERY
8000 East Bellview Avenue, Suite B-90
Greenwood Village, CO 80111
888-402-4663



Jackson Creek
DANIEL

Approx. square feet: 2,300
Stories: 1
Bedrooms: 3 - 4
Garage: 3-car
Plan Number: R232

This new beautiful ranch home that combines style and comfort. A covered porch welcomes you inside. Other features include a charming kitchen with island and walk-in pantry, a vast great room and a full unfinished basement.



Elevation E

Available elevations:



Elevation E



Elevation G

COMMUNITY LOCATION
16457 Curled Oak Drive
Monument, CO 80132
719-277-9009

HOME GALLERY
8000 East Bellview Avenue, Suite B-90
Greenwood Village, CO 80111
888-402-4663

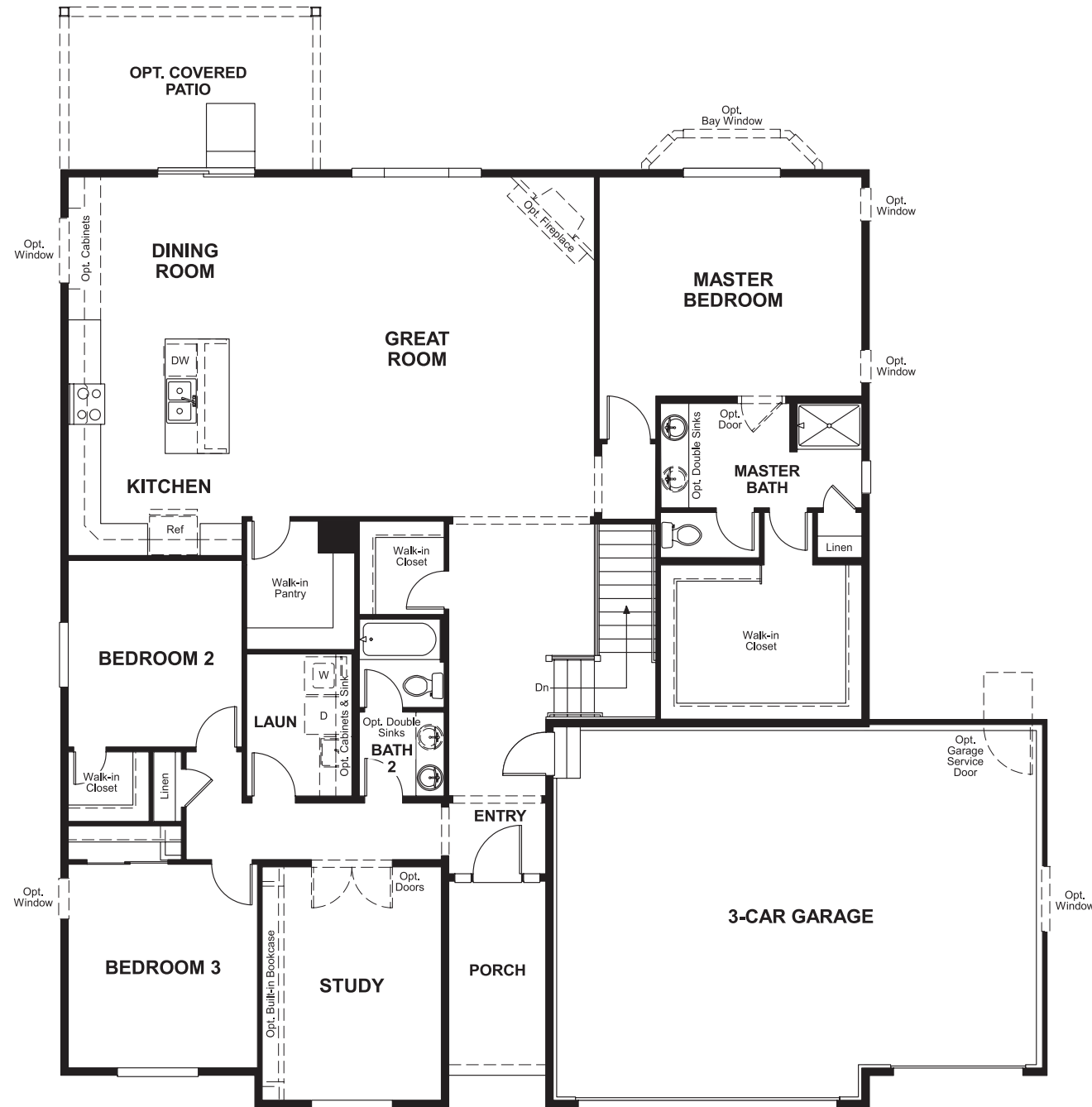


Jackson Creek
DANIEL

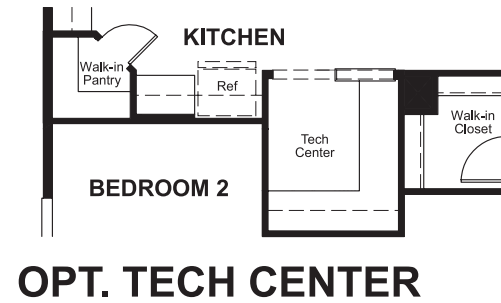
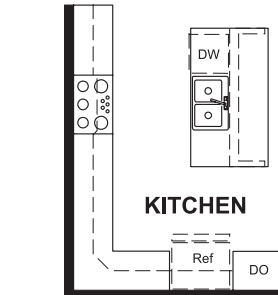
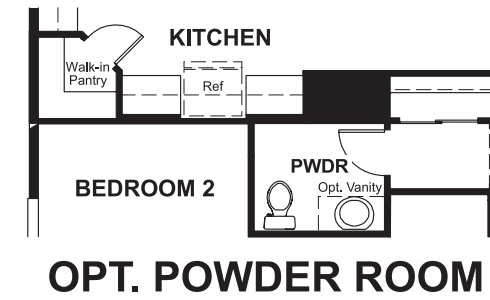
Approx. square feet: 2,300
Stories: 1
Bedrooms: 3 - 4

Garage: 3-car
Plan Number: R232

Floor Plan
First Floor



Floor Plan
First Floor Options



**THIS PLAN'S PROJECTED
HERS® INDEX = 62***
Projected Rating Based on Plans – Field Confirmation Required

How does this floor plan rate?
Take a look: **100** = Standard new home* **130** = Typical resale home**
The lower the number, the better! Refer to the RESNET® HERS index brochure or go to www.RESNET.us for details.

What's a HERS® Index? HERS stands for Home Energy Rating System, a system created by RESNET® to measure home energy efficiency.[^]
A Projected HERS index or rating is a computer simulation performed prior to construction by a third-party HERS rater using RESNET-accredited rating software, rated feature and specification data derived from home plans, features and specifications, and other data selected or assumed by the rater. The projected HERS index is approximate and is subject to change without notice. Actual results will vary.

*This information is presented for education purposes only. The HERS index for a confirmed rating will be determined by a third-party HERS rater based on data gathered from on-site observations and, if required, testing of rated features for a home as featured, optioned, located, oriented and/or built.
+Standard new home is based on the RESNET® Reference Home definition with a HERS® index of 100 (based on the 2006 International Energy Conservation Code).
**Typical resale home is based on the U.S. Department of Energy definition with a HERS® index of 130.

[^]RESNET® has developed the HERS® index to indicate the comparative efficiencies of homes. It is no guarantee that energy efficiencies will be achieved.