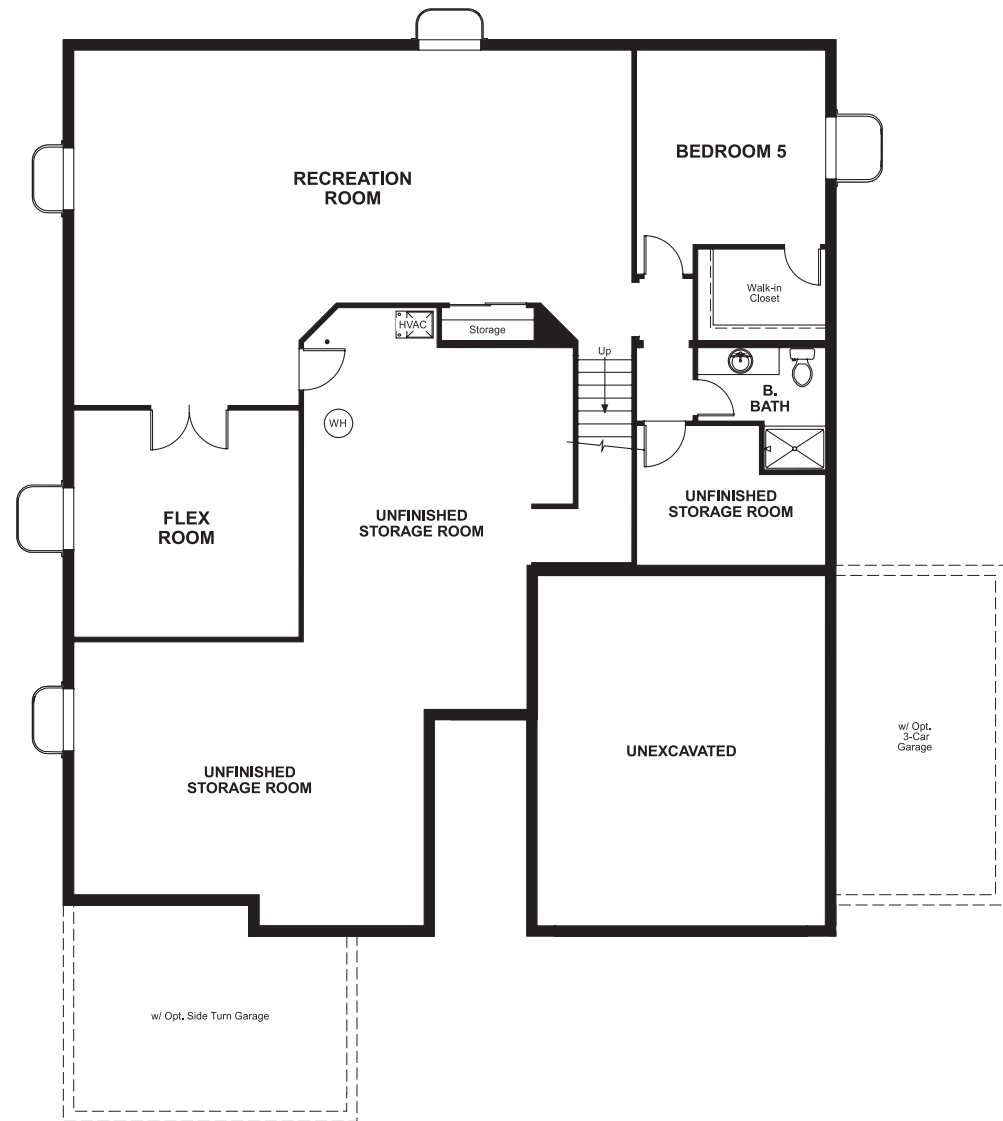


The Summit at Tallyn's Reach
DANIEL

Approx. square feet: 2,300
Stories: 1
Bedrooms: 3 - 5

Garage: 2-car
Plan Number: D21D

Floor Plan
Basement



OPT. FINISHED BASEMENT

COMMUNITY LOCATION
6746 South Biloxi Court
Aurora, CO 80016
TBD

HOME GALLERY
8000 East Bellview Avenue, Suite B-90
Greenwood Village, CO 80111
888-402-4663



The Summit at Tallyn's Reach
DANIEL

Approx. square feet: 2,300
Stories: 1
Bedrooms: 3 - 5
Garage: 2-car
Plan Number: D21D

A shady covered entry welcomes guests to the beautiful ranch-style Daniel plan. The main floor offers a private study, an inviting great room and an open kitchen with center island, walk-in pantry and optional professional features. The lavish master suite with deluxe bath is separated from two additional bedrooms for added privacy. Personalization options include a tech center and finished basement.



Elevation A

Available elevations:



Elevation A



Elevation C



Elevation D

COMMUNITY LOCATION
6746 South Biloxi Court
Aurora, CO 80016
TBD

HOME GALLERY
8000 East Bellview Avenue, Suite B-90
Greenwood Village, CO 80111
888-402-4663

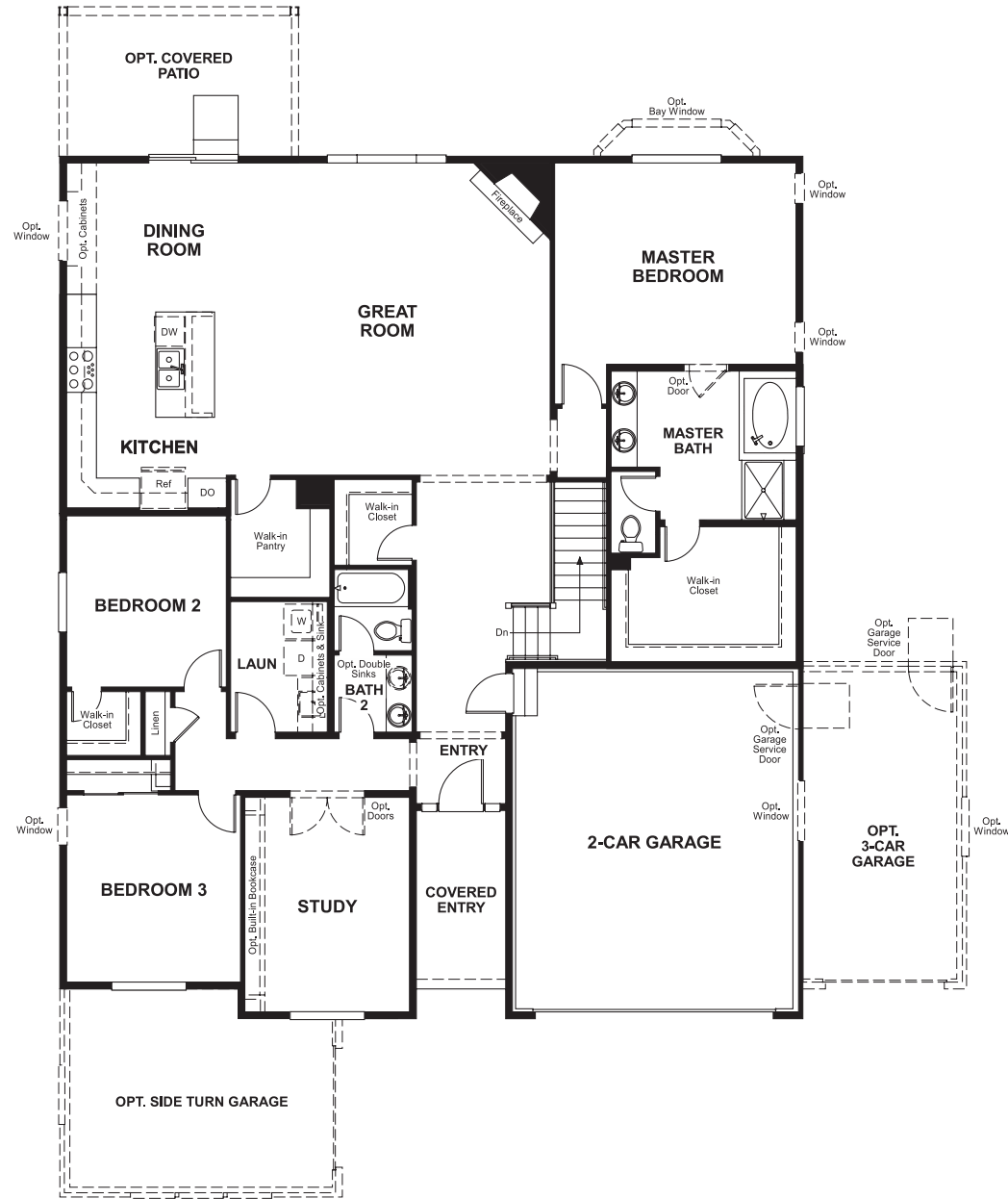


The Summit at Tallyn's Reach
DANIEL

Approx. square feet: 2,300
Stories: 1
Bedrooms: 3 - 5

Garage: 2-car
Plan Number: D21D

Floor Plan
First Floor



Floor Plan
First Floor Options

