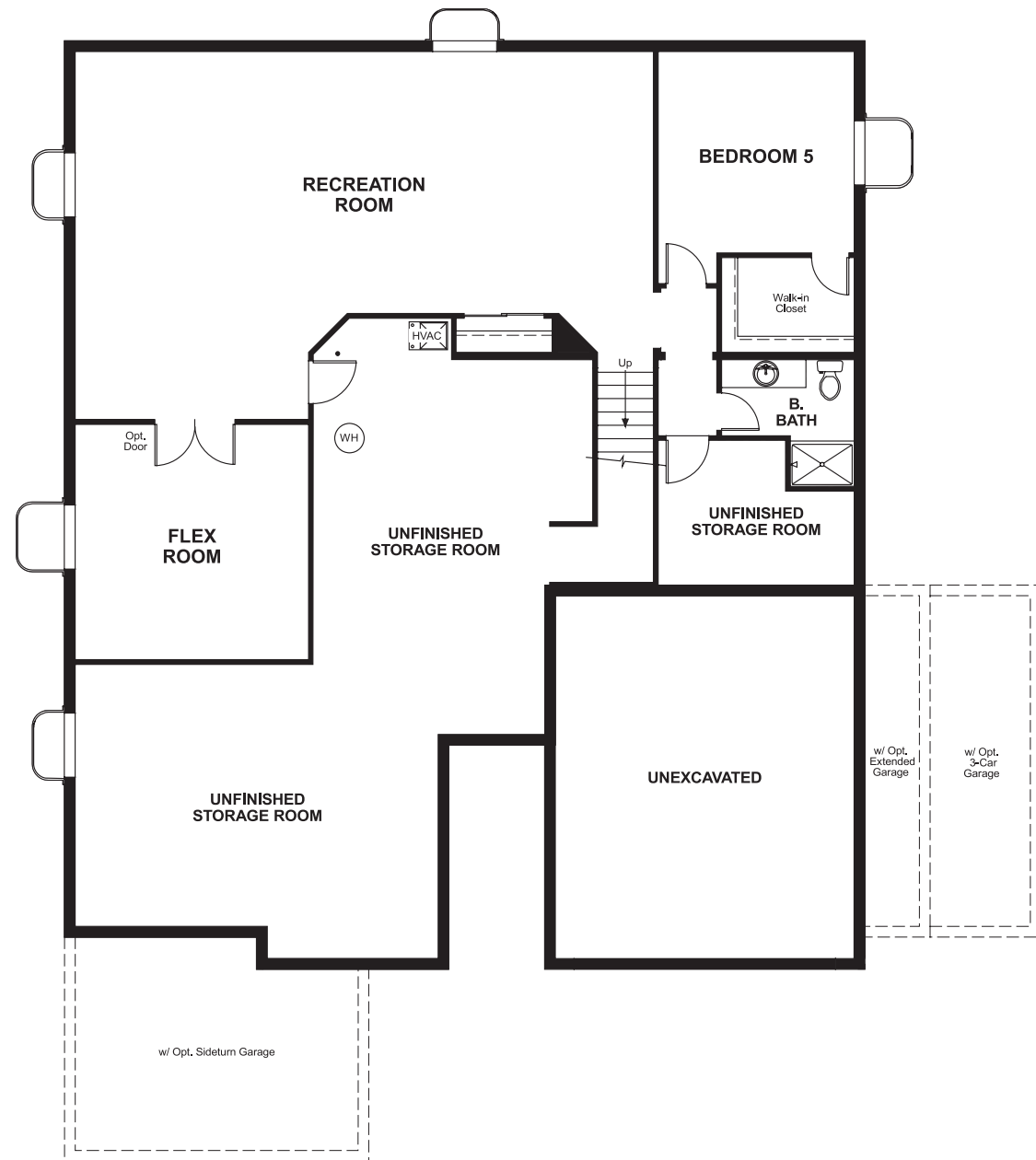


Meridian Heritage  
**DANIEL**

**Approx. square feet:** 2,300  
**Stories:** 1  
**Bedrooms:** 3 - 5

**Garage:** 2- to 3-car  
**Plan Number:** D237

**Floor Plan**  
Basement



**OPT. FINISHED BASEMENT**

Meridian Heritage  
**DANIEL**

**Approx. square feet:** 2,300  
**Stories:** 1  
**Bedrooms:** 3 - 5  
**Garage:** 2- to 3-car  
**Plan Number:** D237

A covered porch welcomes you to the ranch-style Daniel floor plan. The open kitchen includes a convenient center island and walk-in pantry. Select an optional gas fireplace in the spacious great room, and choose from a private study or optional fourth bedroom. A full unfinished basement completes this charming home.



**Elevation A**

**Available elevations:**



**Elevation A**



**Elevation B**



**Elevation C**



**Elevation D**

**COMMUNITY LOCATION**  
10771 Hillsboro Street  
Parker, CO 80134  
303-841-3528

**HOME GALLERY**  
8000 East Bellview Avenue, Suite B-90  
Greenwood Village, CO 80111  
888-402-4663



**COMMUNITY LOCATION**  
10771 Hillsboro Street  
Parker, CO 80134  
303-841-3528

**HOME GALLERY**  
8000 East Bellview Avenue, Suite B-90  
Greenwood Village, CO 80111  
888-402-4663

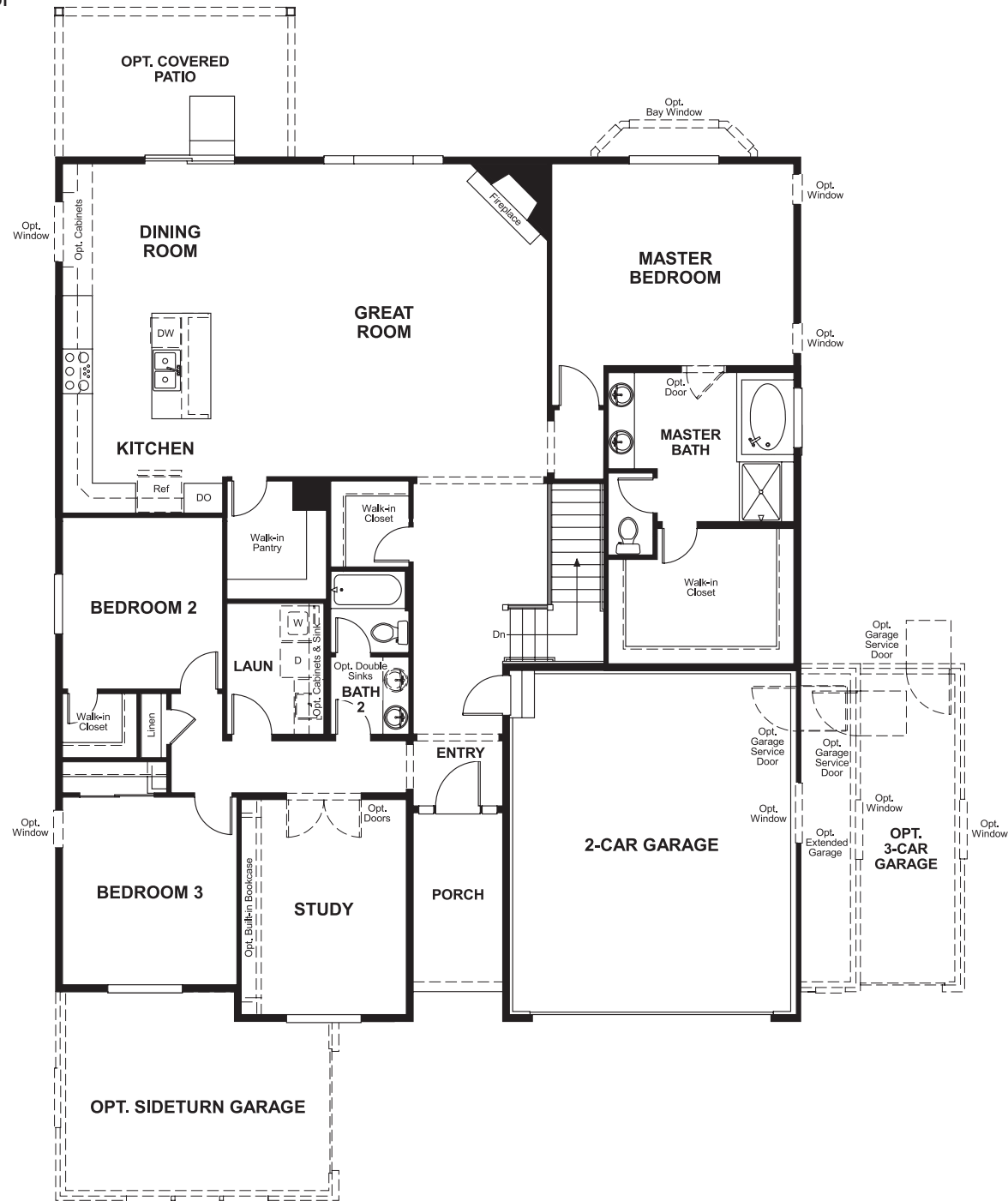


Meridian Heritage  
**DANIEL**

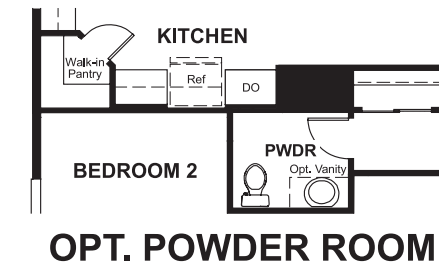
**Approx. square feet:** 2,300  
**Stories:** 1  
**Bedrooms:** 3 - 5

**Garage:** 2- to 3-car  
**Plan Number:** D237

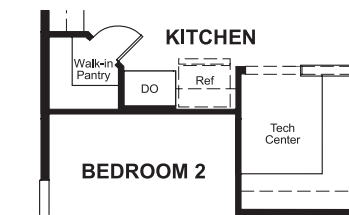
**Floor Plan**  
First Floor



**Floor Plan**  
First Floor Options



**OPT. POWDER ROOM**



**OPT. TECH CENTER**



**OPT. BEDROOM 4**