

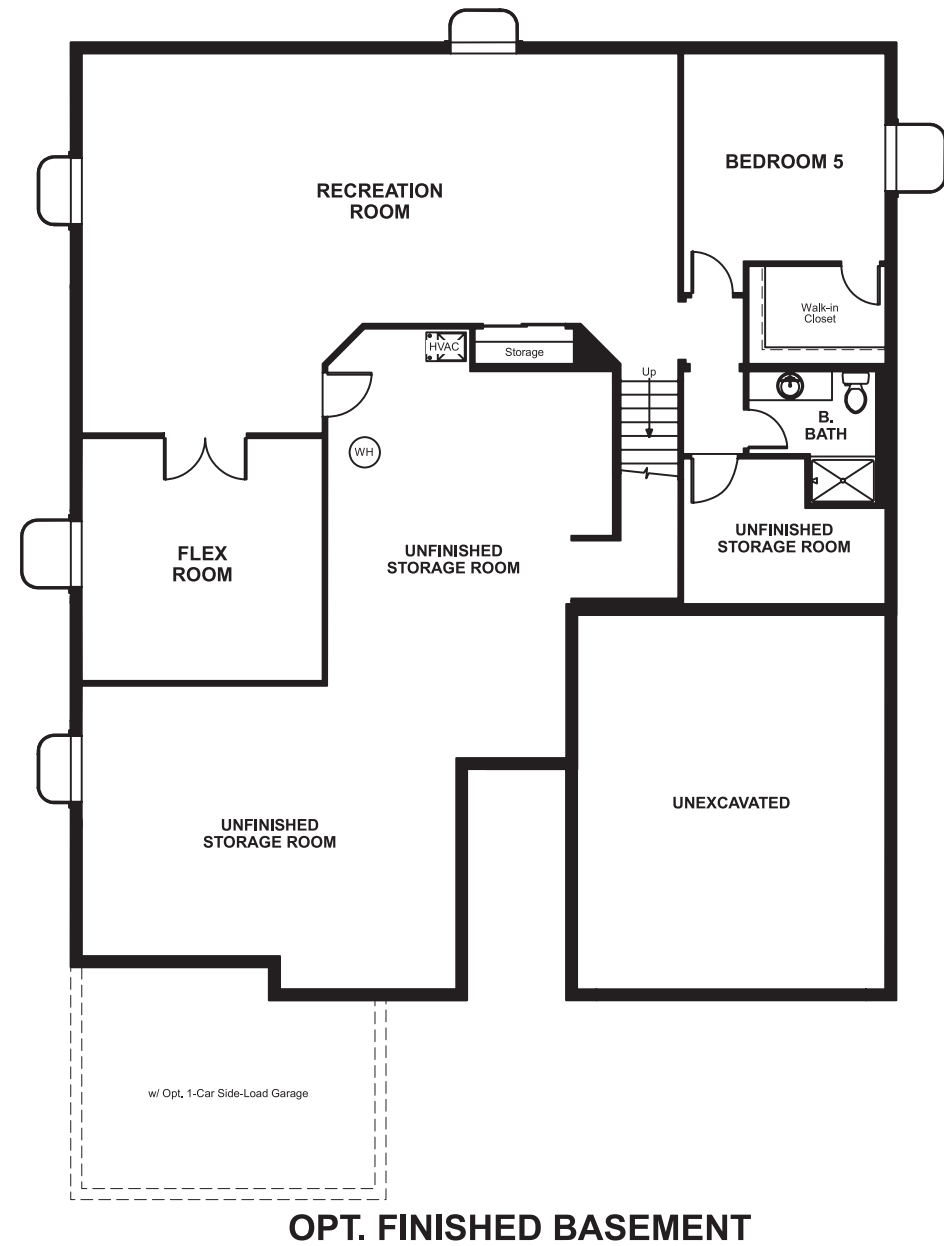
Anthology West
DANIEL

Approx. square feet: 2,300
Stories: 1
Bedrooms: 3 - 5

Garage: 2- to 3-Car
Plan Number: D237

Anthology West
DANIEL

Floor Plan
Basement



Elevation A

Available elevations:



Elevation A



Elevation B



Elevation C



Elevation D

Approx. square feet: 2,300
Stories: 1
Bedrooms: 3 - 5
Garage: 2- to 3-Car
Plan Number: D237

Live in luxury with a study or an optional fourth bedroom, or a covered patio that you can place just off the dining area. Enjoy a private master bedroom set away from the other bedrooms, and enhance it and its generous walk-in closet with a deluxe master bath.

COMMUNITY LOCATION
North Motesbocker Road & Keyser Creek Avenue
Parker, CO 80134
303-850-5750

HOME GALLERY
8000 East Belleview Avenue, Suite C-12
Greenwood Village, CO 80111
888-402-4663

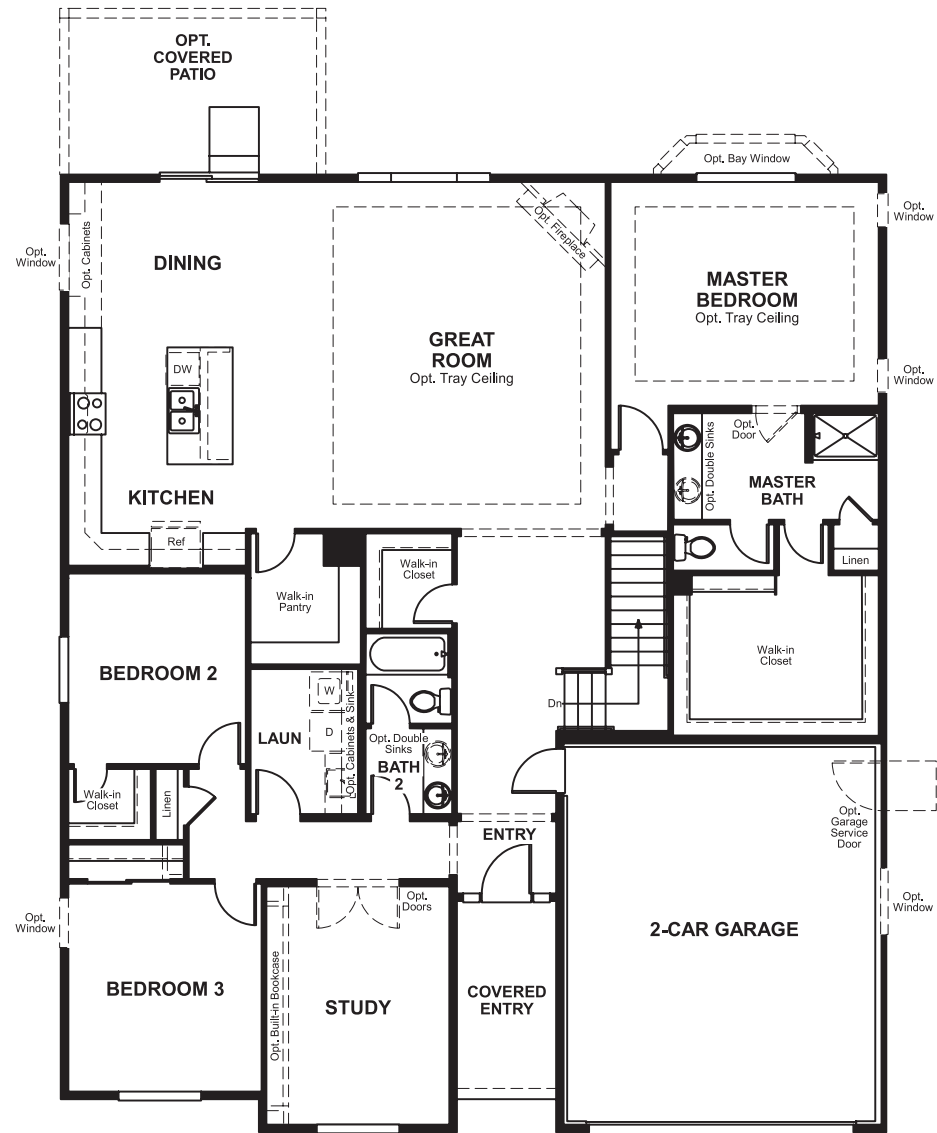


COMMUNITY LOCATION
North Motesbocker Road & Keyser Creek Avenue
Parker, CO 80134
303-850-5750

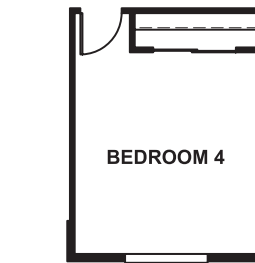
HOME GALLERY
8000 East Belleview Avenue, Suite C-12
Greenwood Village, CO 80111
888-402-4663



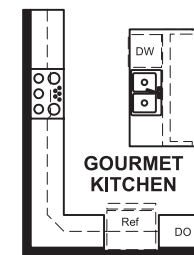
Floor Plan
Main Floor



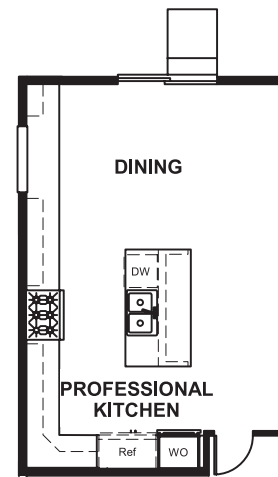
Floor Plan
Main Floor Options



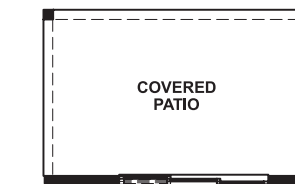
OPT. BEDROOM 4



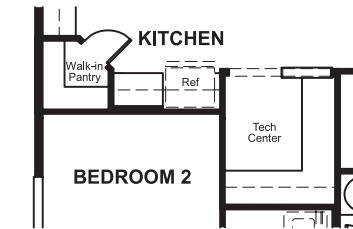
OPT. GOURMET KITCHEN



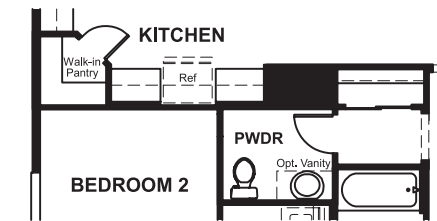
OPT. PROFESSIONAL KITCHEN



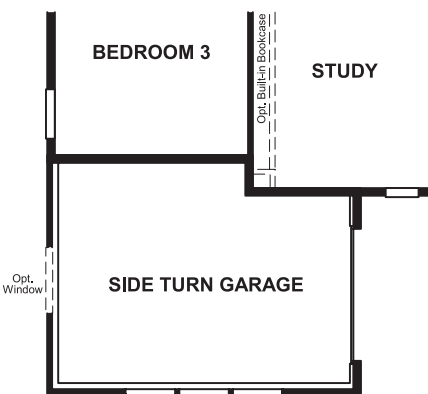
OPT. MULTI-SLIDE DOOR



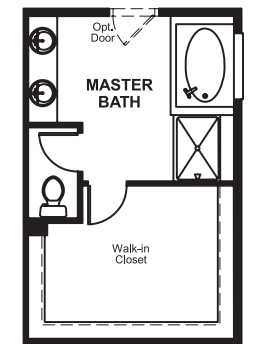
OPT. TECH CENTER



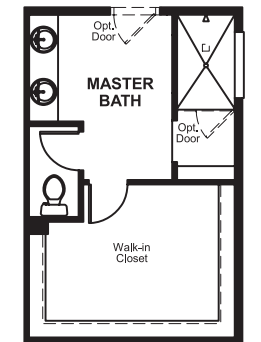
OPT. POWDER ROOM



OPT. 1-CAR SIDE TURN GARAGE



OPT. DELUXE MASTER BATH 1



OPT. DELUXE MASTER BATH 2

THIS PLAN'S PROJECTED HERS® INDEX = 60*
Projected Rating Based on Plans – Field Confirmation Required

How does this floor plan rate?
Take a look: **100** = Standard new home* **130** = Typical resale home**
The lower the number, the better! Refer to the RESNET® HERS index brochure or go to www.RESNET.us for details.

What's a HERS® Index? HERS stands for Home Energy Rating System, a system created by RESNET® to measure home energy efficiency. A Projected HERS index or rating is a computer simulation performed prior to construction by a third-party HERS rater using RESNET-accredited rating software, rated feature and specification data derived from home plans, features and specifications, and other data selected or assumed by the rater. The projected HERS index is approximate and is subject to change without notice. Actual results will vary.

*This information is presented for education purposes only. The HERS index for a confirmed rating will be determined by a third-party HERS rater based on data gathered from on-site observations and, if required, testing of rated features for a home as featured, optioned, located, oriented and/or built.
+Standard new home is based on the RESNET® Reference Home definition with a HERS® index of 100 (based on the 2006 International Energy Conservation Code).
++Typical resale home is based on the U.S. Department of Energy definition with a HERS® index of 130.

^RESNET® has developed the HERS® index to indicate the comparative efficiencies of homes. It is no guarantee that energy efficiencies will be achieved.