

Eastchurch
DAPHNE

Approx. square feet: 2,550
Stories: 2
Bedrooms: 4 - 5

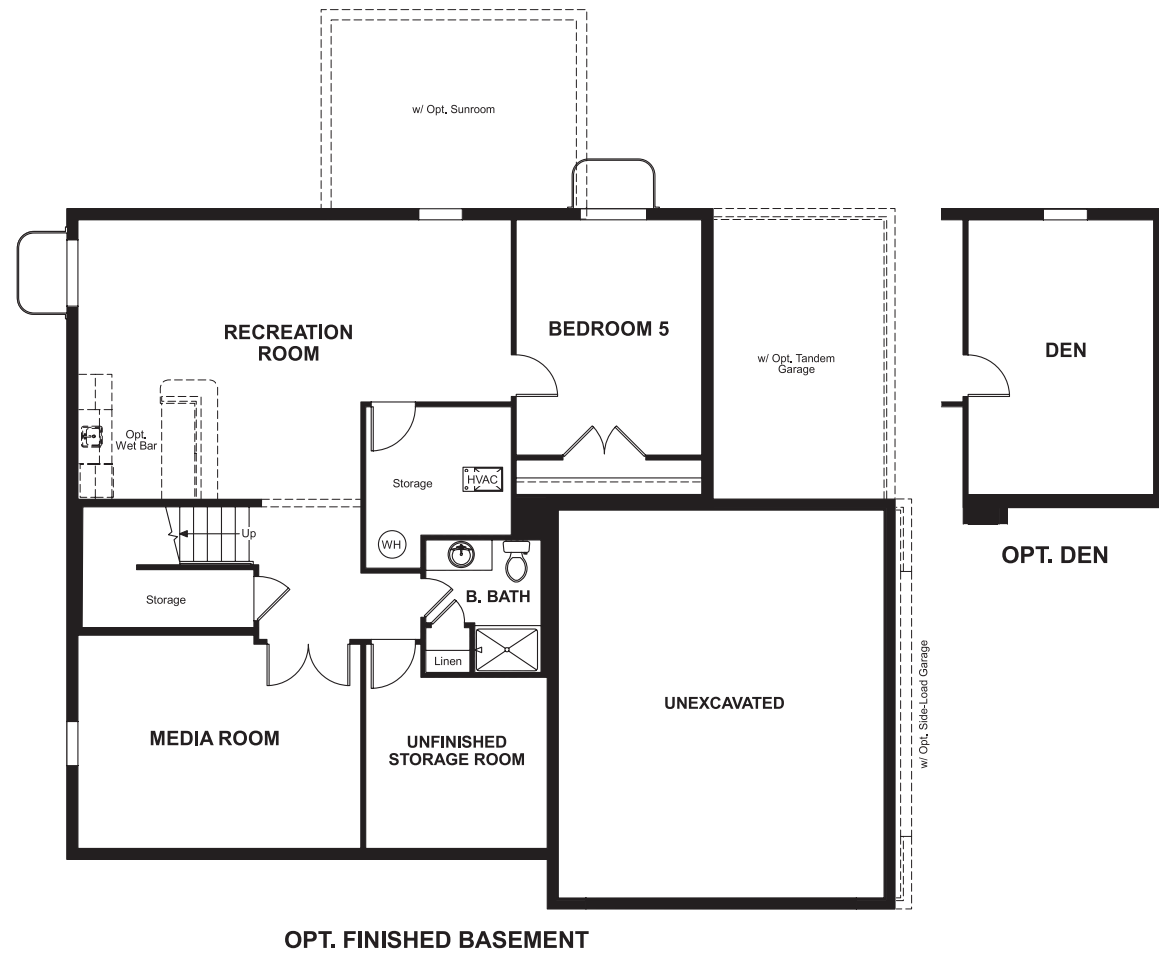
Garage: 2- to 3-car
Plan Number: M25D

Eastchurch
DAPHNE

Approx. square feet: 2,550
Stories: 2
Bedrooms: 4 - 5
Garage: 2- to 3-car
Plan Number: M25D

A study and formal dining room flank the entry to the Daphne plan. In the back of the home, you'll find an open family room, nook and kitchen, as well as a mudroom off the garage. Upstairs, there's a laundry room, three bedrooms and a master suite with private bath and walk-in closet. A finished basement is optional.

Floor Plan
Basement



Elevation A

Available elevations:



Elevation A



Elevation B



Elevation C



Elevation D



Elevation E



Elevation F

COMMUNITY LOCATION
725 Holden Road
Frederick, MD 21701
410-312-2829



COMMUNITY LOCATION
725 Holden Road
Frederick, MD 21701
410-312-2829

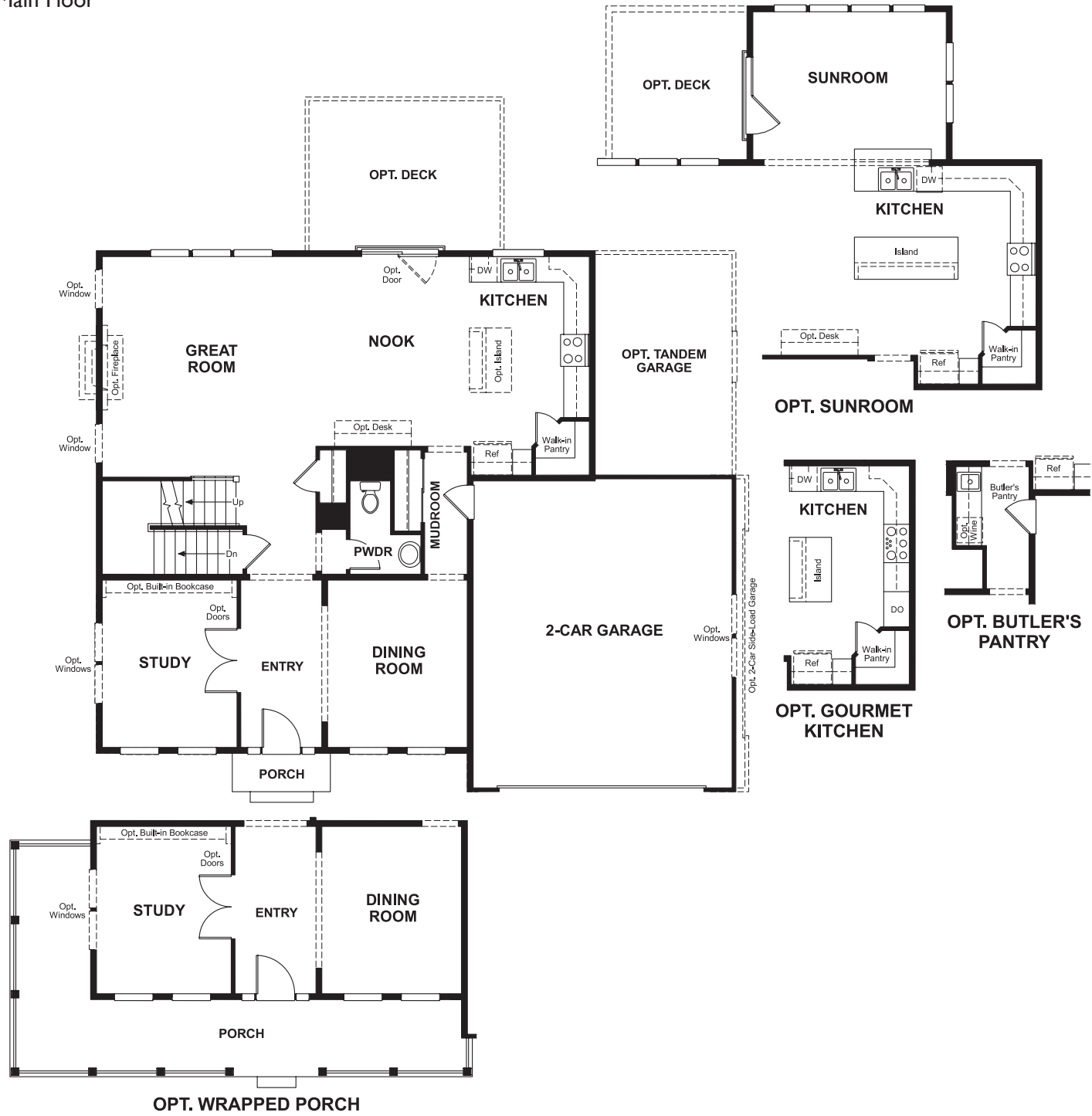


Eastchurch
DAPHNE

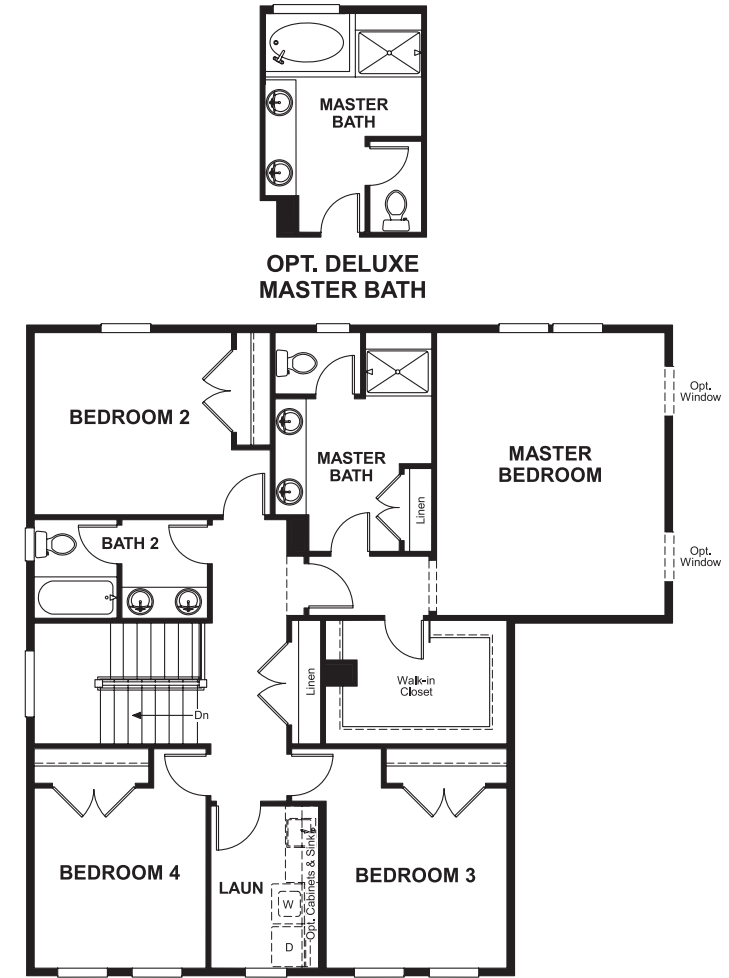
Approx. square feet: 2,550
Stories: 2
Bedrooms: 4 - 5

Garage: 2- to 3-car
Plan Number: M25D

Floor Plan
Main Floor



Floor Plan
Second Floor



**THIS PLAN'S PROJECTED
HERS® INDEX = 54***
Projected Rating Based on Plans – Field Confirmation Required

How does this floor plan rate?
Take a look: **100** = Standard new home* **130** = Typical resale home**
The lower the number, the better! Refer to the RESNET® HERS index brochure or go to www.RESNET.us for details.

What's a HERS® Index? HERS stands for Home Energy Rating System, a system created by RESNET® to measure home energy efficiency. A Projected HERS index or rating is a computer simulation performed prior to construction by a third-party HERS rater using RESNET-accredited rating software, rated feature and specification data derived from home plans, features and specifications, and other data selected or assumed by the rater. The projected HERS index is approximate and is subject to change without notice. Actual results will vary.

*This information is presented for education purposes only. The HERS index for a confirmed rating will be determined by a third-party HERS rater based on data gathered from on-site observations and, if required, testing of rated features for a home as featured, optioned, located, oriented and/or built.
+Standard new home is based on the RESNET® Reference Home definition with a HERS® index of 100 (based on the 2006 International Energy Conservation Code).
++Typical resale home is based on the U.S. Department of Energy definition with a HERS® index of 130.

^RESNET® has developed the HERS® index to indicate the comparative efficiencies of homes. It is no guarantee that energy efficiencies will be achieved.