

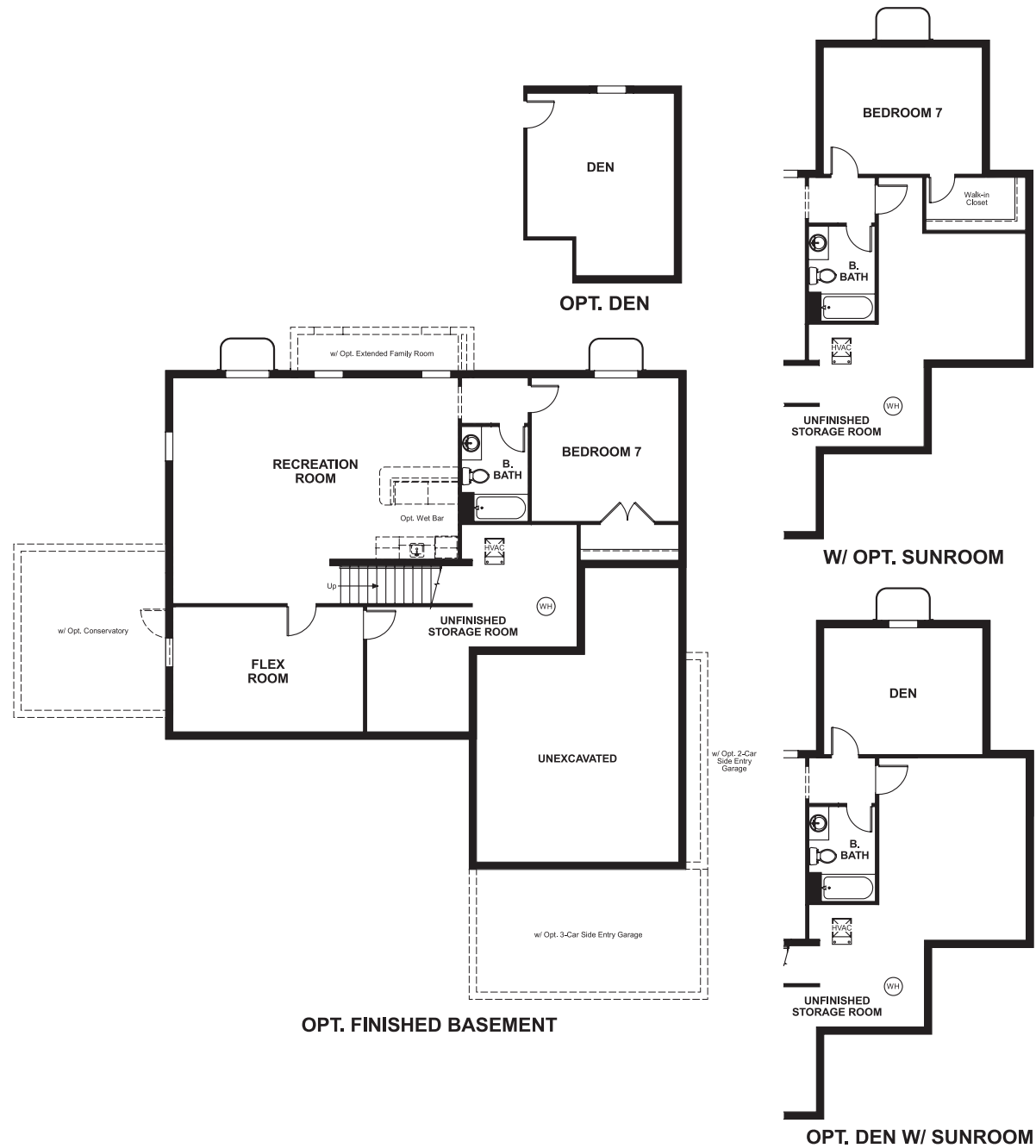
Old Dominion Greens
DARBY

Approx. square feet: 2,950
Stories: 2
Bedrooms: 4 - 7

Garage: 2- to 3-car
Plan Number: M286

Old Dominion Greens
DARBY

Floor Plan
Basement



Elevation A

Available elevations:



Elevation A



Elevation B



Elevation C



Elevation D



Elevation E



Elevation F

Approx. square feet: 2,950
Stories: 2
Bedrooms: 4 - 7
Garage: 2- to 3-car
Plan Number: M286

The Darby is a versatile floor plan offering up to six bedrooms. Its open layout includes a dramatic two-story foyer flanked by formal living and dining rooms. Enjoy a cozy rear library and optional rear and side sunrooms.

COMMUNITY LOCATION
218 Bridgewater Drive
Stephens City, VA 22655
540-548-4435

HOME GALLERY
11393 Government Center Parkway
Fairfax, VA 22030
888-891-7349



COMMUNITY LOCATION
218 Bridgewater Drive
Stephens City, VA 22655
540-548-4435

HOME GALLERY
11393 Government Center Parkway
Fairfax, VA 22030
888-891-7349

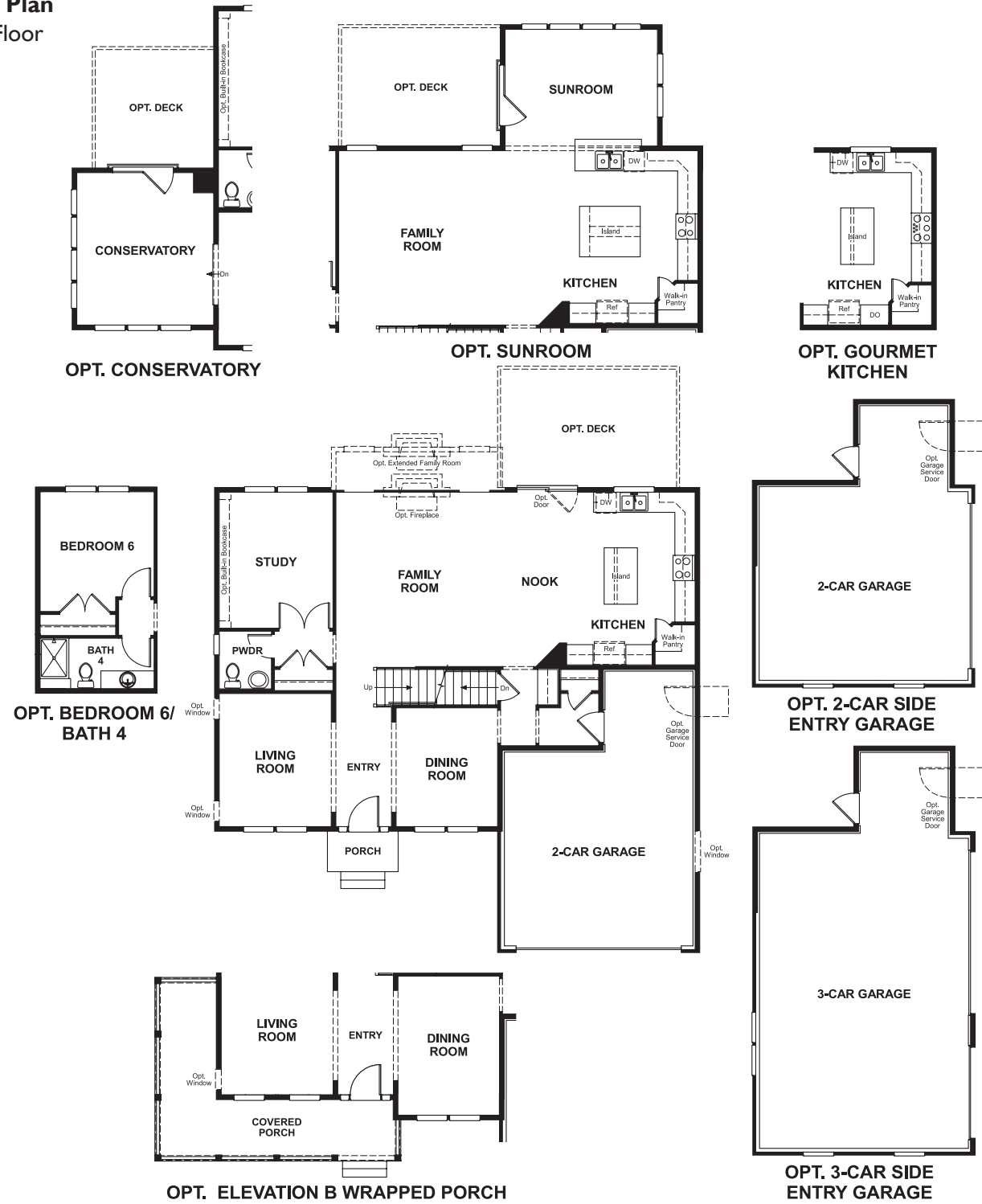


Old Dominion Greens
DARBY

Approx. square feet: 2,950
Stories: 2
Bedrooms: 4 - 7

Garage: 2- to 3-car
Plan Number: M286

Floor Plan
Main Floor



Floor Plan
Second Floor

