

Clearview at New Market  
**DARBY**

**Approx. square feet:** 2,850  
**Stories:** 2  
**Bedrooms:** 4 - 7

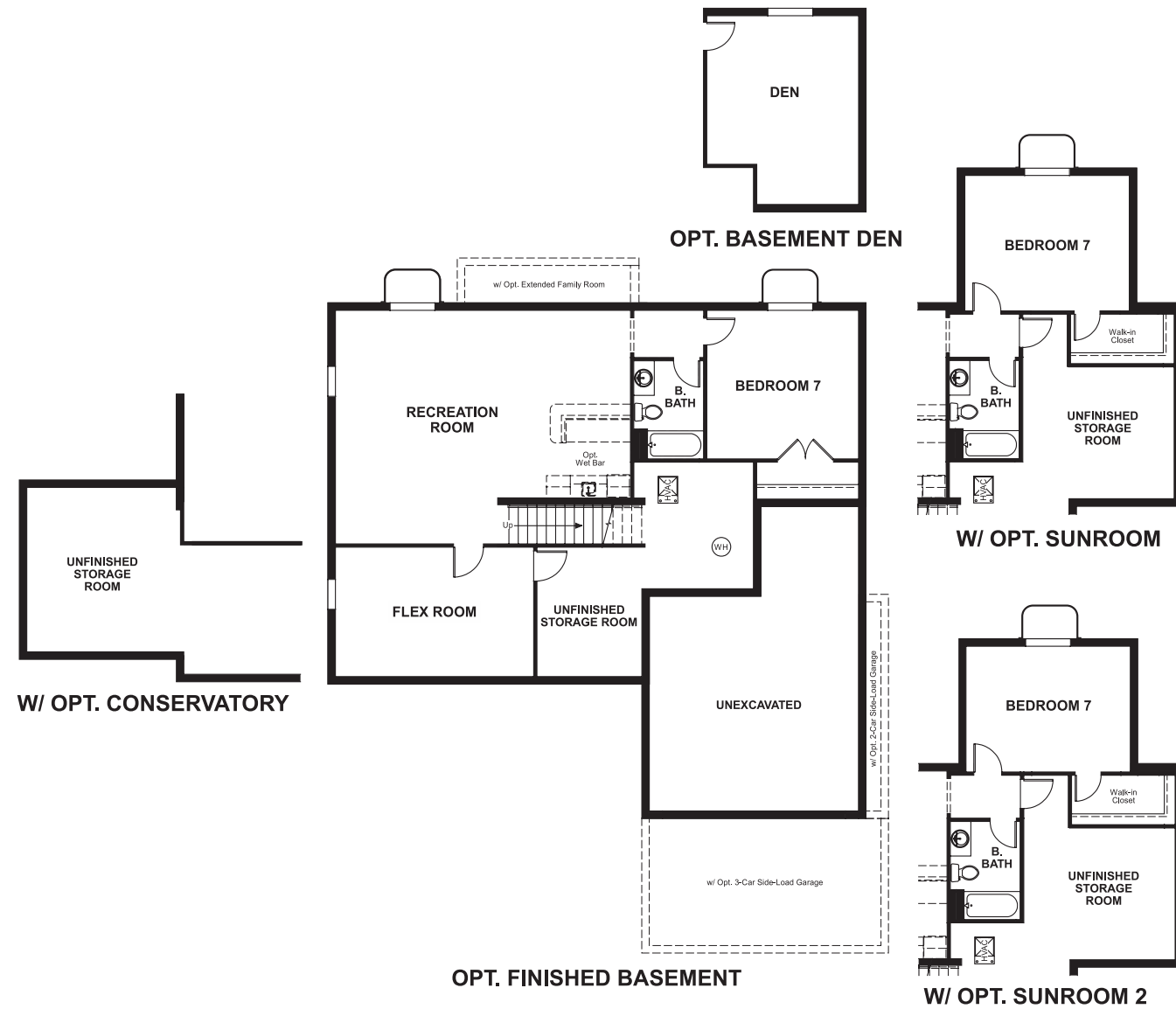
**Garage:** 2- to 3-car  
**Plan Number:** M286

Clearview at New Market  
**DARBY**

**Approx. square feet:** 2,850  
**Stories:** 2  
**Bedrooms:** 4 - 7  
**Garage:** 2- to 3-car  
**Plan Number:** M286

The 4-bedroom Darby plan is ready for your personal touches. Outfit the spacious master suite and sitting room with the colors, textures and flooring you love—or add an optional deluxe master bath! Downstairs, personalize the quiet study with built-in bookcases, or upgrade the corner kitchen with gourmet features and granite counter tops.

**Floor Plan**  
Basement



**Elevation A**

**Available elevations:**



**Elevation A**



**Elevation B**



**Elevation C**



**Elevation D**



**Elevation E**



**Elevation F**

**COMMUNITY LOCATION**  
6100 Yeager Court  
New Market, MD 21774  
410-312-2829

**HOME GALLERY**  
6210 Old Dobbin Lane, Suite 190  
Columbia, MD 21045  
888-772-4545



**COMMUNITY LOCATION**  
6100 Yeager Court  
New Market, MD 21774  
410-312-2829

**HOME GALLERY**  
6210 Old Dobbin Lane, Suite 190  
Columbia, MD 21045  
888-772-4545

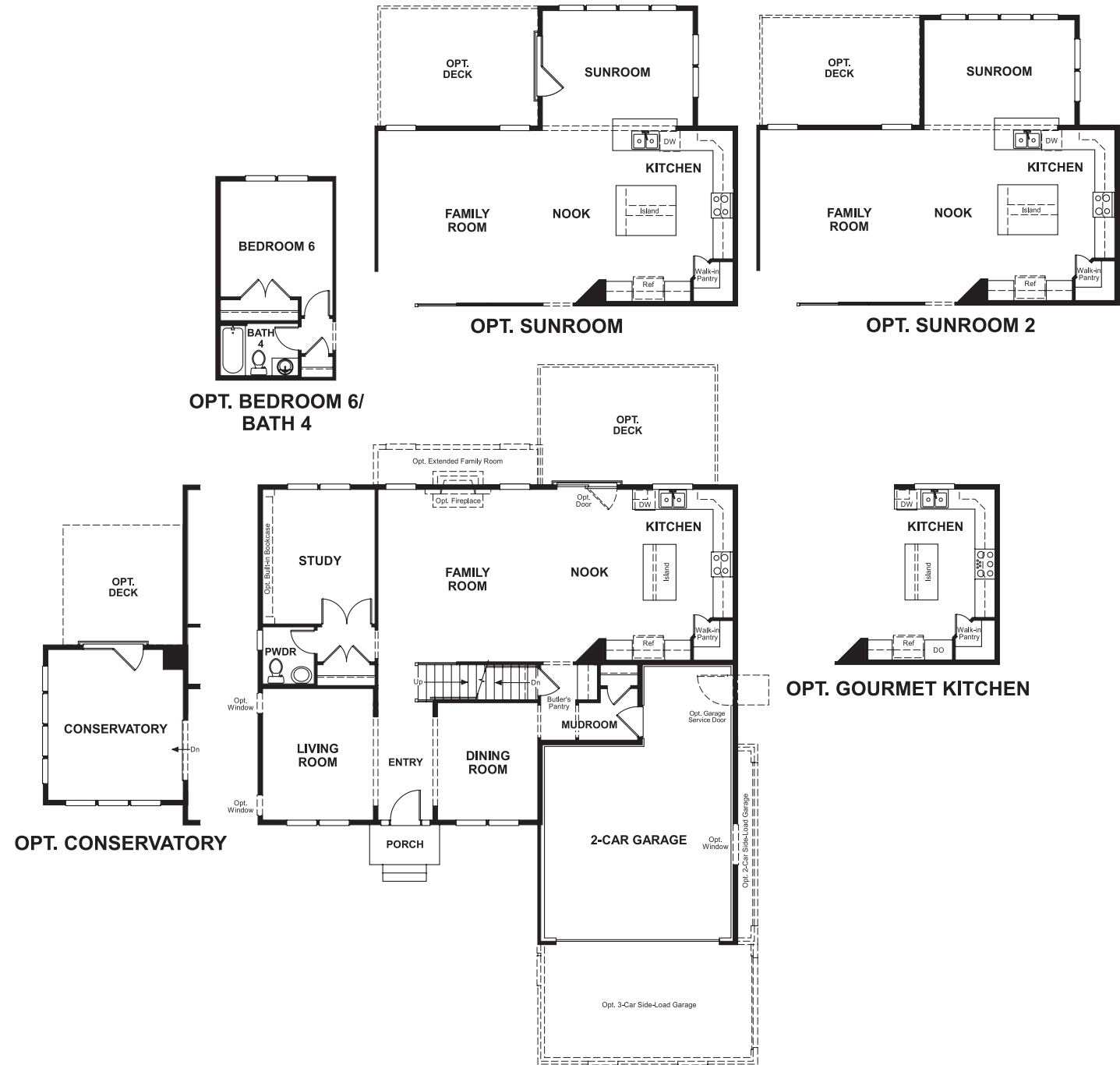


Clearview at New Market  
**DARBY**

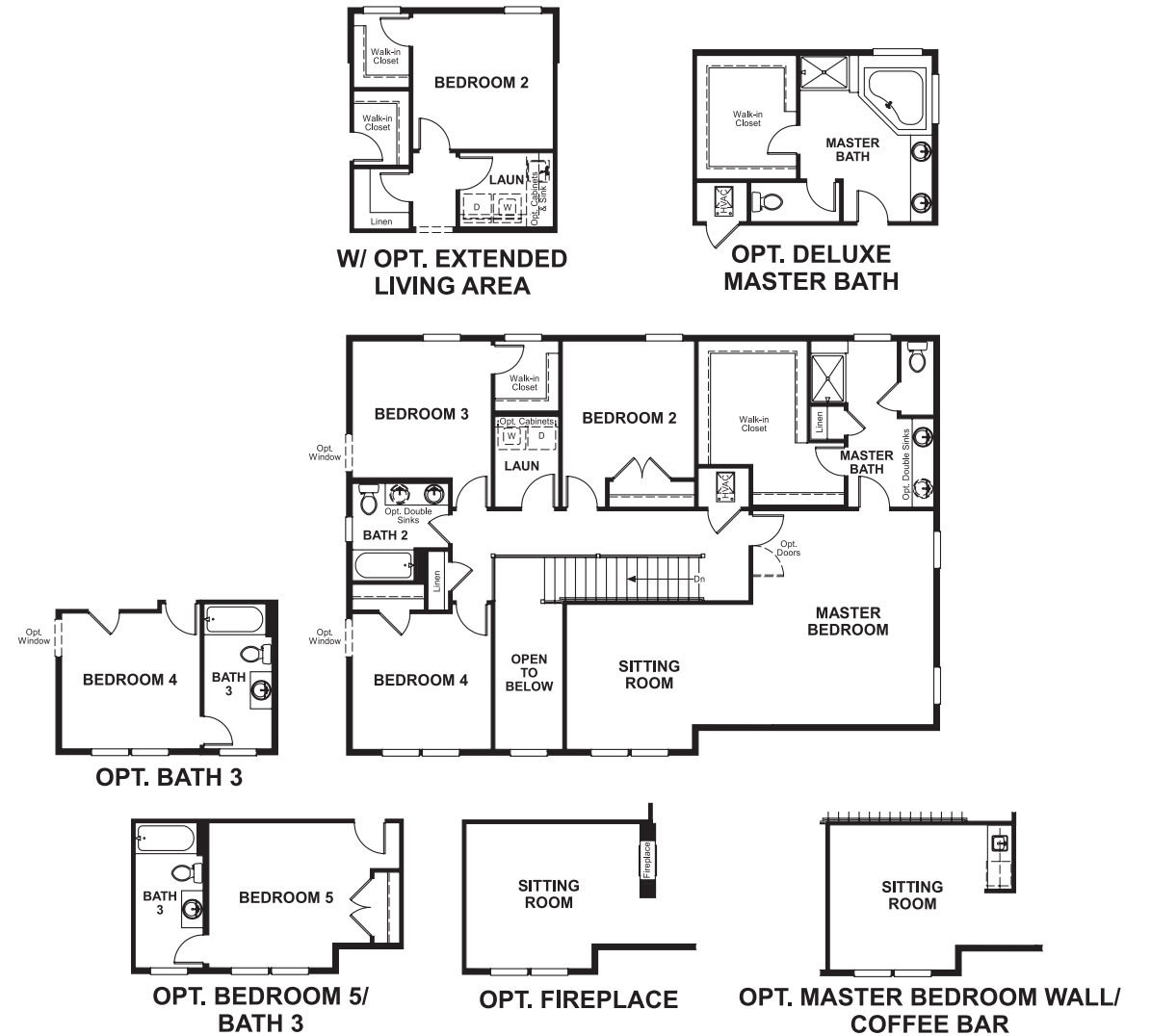
**Approx. square feet:** 2,850  
**Stories:** 2  
**Bedrooms:** 4 - 7

**Garage:** 2- to 3-car  
**Plan Number:** M286

**Floor Plan**  
Main Floor



**Floor Plan**  
Second Floor



**THIS PLAN'S PROJECTED**  
**HERS® INDEX = 56\***  
Projected Rating Based on Plans – Field Confirmation Required

**How does this floor plan rate?**  
Take a look: **100** = Standard new home\* **130** = Typical resale home\*\*  
The lower the number, the better! Refer to the RESNET® HERS index brochure or go to [www.RESNET.us](http://www.RESNET.us) for details.

**What's a HERS® Index?** HERS stands for Home Energy Rating System, a system created by RESNET® to measure home energy efficiency.<sup>^</sup>  
A Projected HERS index or rating is a computer simulation performed prior to construction by a third-party HERS rater using RESNET-accredited rating software, rated feature and specification data derived from home plans, features and specifications, and other data selected or assumed by the rater. The projected HERS index is approximate and is subject to change without notice. Actual results will vary.

\*This information is presented for education purposes only. The HERS index for a confirmed rating will be determined by a third-party HERS rater based on data gathered from on-site observations and, if required, testing of rated features for a home as featured, optioned, located, oriented and/or built.  
+Standard new home is based on the RESNET® Reference Home definition with a HERS® index of 100 (based on the 2006 International Energy Conservation Code).  
++Typical resale home is based on the U.S. Department of Energy definition with a HERS® index of 130.

<sup>^</sup>RESNET® has developed the HERS® index to indicate the comparative efficiencies of homes. It is no guarantee that energy efficiencies will be achieved.