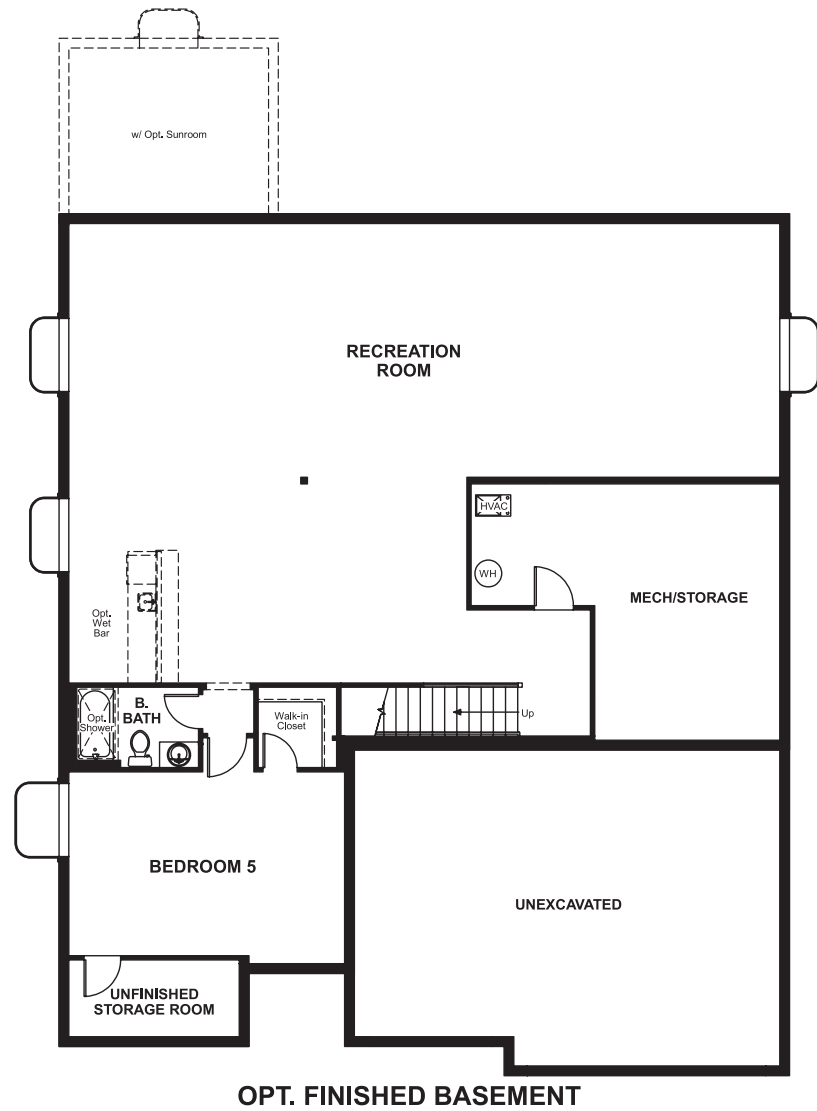


Lakeview at Southshore  
**DEARBORN**

**Approx. square feet:** 2,200  
**Stories:** 1  
**Bedrooms:** 3 - 5

**Garage:** 3-car  
**Plan Number:** D729

**Floor Plan**  
Basement



**OPT. FINISHED BASEMENT**

**COMMUNITY LOCATION**

East Southshore Parkway & Powhatan Road  
Aurora, CO 80016  
303-850-5750

**HOME GALLERY**

8000 East Belleview Avenue, Suite C-12  
Greenwood Village, CO 80111  
888-402-4663



Lakeview at Southshore  
**DEARBORN**



**Elevation D**

**Available elevations:**



**Elevation D**



**Elevation E**



**Elevation F**

**COMMUNITY LOCATION**

East Southshore Parkway & Powhatan Road  
Aurora, CO 80016  
303-850-5750

**HOME GALLERY**

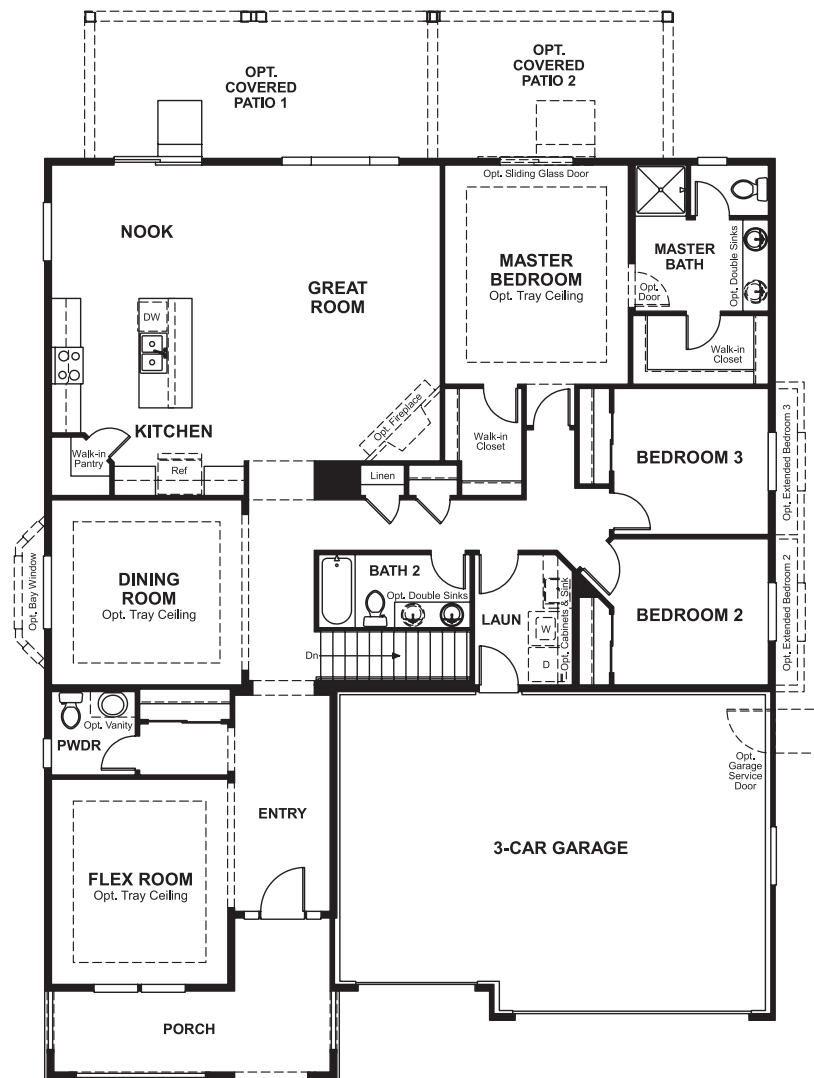
8000 East Belleview Avenue, Suite C-12  
Greenwood Village, CO 80111  
888-402-4663



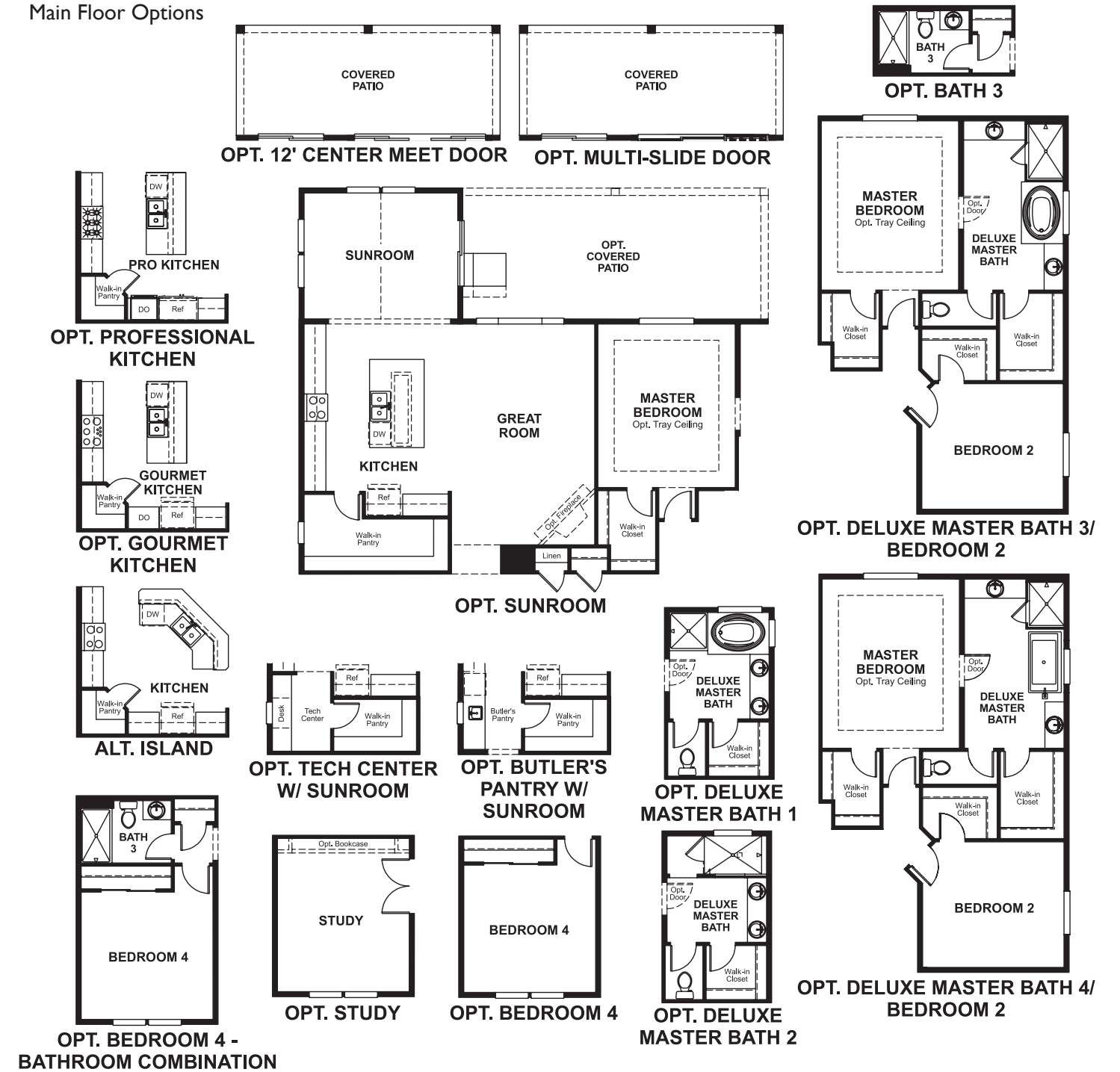
**Approx. square feet:** 2,200  
**Stories:** 1  
**Bedrooms:** 3 - 5  
**Garage:** 3-car  
**Plan Number:** D729

Personalize the ranch-style Dearborn to fit your lifestyle! Off the entry, you'll find an elegant living room that may be optioned as a study or additional bedroom. Next, you'll pass a convenient powder bath and a flex room offering an optional bay window. Straight ahead, there's an immense open great room with optional fireplace, a nook and a kitchen with a large pantry and center island. The laundry is easily accessible by all three bedrooms, including the master suite with private bath and two walk-in closets.

**Floor Plan**  
Main Floor



**Floor Plan**  
Main Floor Options



**THIS PLAN'S PROJECTED HERS® INDEX = 57\***  
Projected Rating Based on Plans – Field Confirmation Required

**How does this floor plan rate?**  
Take a look: **100** = Standard new home\* **130** = Typical resale home\*\*  
The lower the number, the better! Refer to the RESNET® HERS index brochure or go to [www.RESNET.us](http://www.RESNET.us) for details.

**What's a HERS® Index?** HERS stands for Home Energy Rating System, a system created by RESNET® to measure home energy efficiency.<sup>^</sup>  
A Projected HERS index or rating is a computer simulation performed prior to construction by a third-party HERS rater using RESNET-accredited rating software, rated feature and specification data derived from home plans, features and specifications, and other data selected or assumed by the rater. The projected HERS index is approximate and is subject to change without notice. Actual results will vary.

\*This information is presented for education purposes only. The HERS index for a confirmed rating will be determined by a third-party HERS rater based on data gathered from on-site observations and, if required, testing of rated features for a home as featured, optioned, located, oriented and/or built.  
+Standard new home is based on the RESNET® Reference Home definition with a HERS® index of 100 (based on the 2006 International Energy Conservation Code).  
\*\*Typical resale home is based on the U.S. Department of Energy definition with a HERS® index of 130.

<sup>^</sup>RESNET® has developed the HERS® index to indicate the comparative efficiencies of homes. It is no guarantee that energy efficiencies will be achieved.