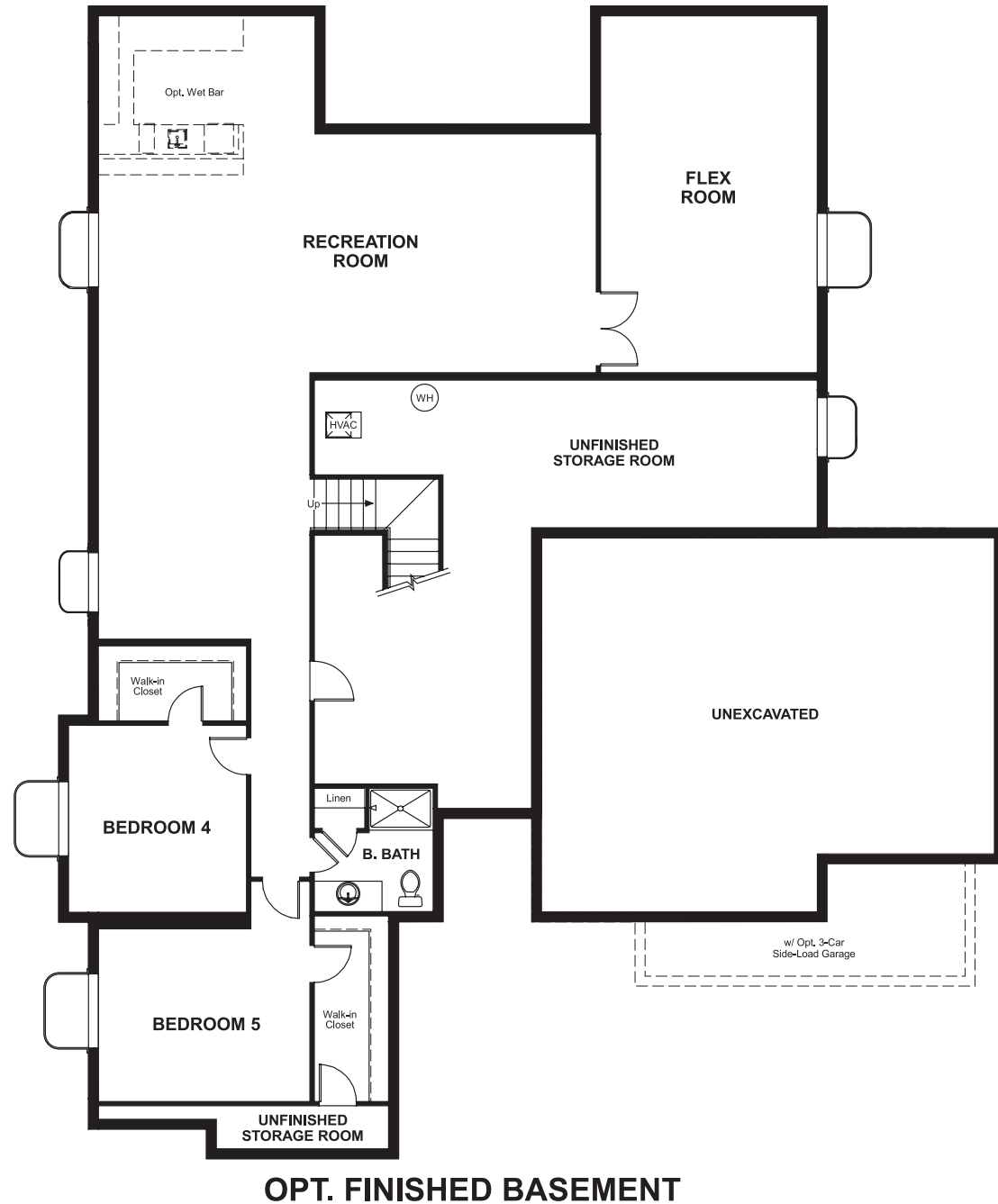


The Summit at Tallyn's Reach
DEBORAH

Approx. square feet: 2,800
Stories: 1
Bedrooms: 3 - 5

Garage: 3-car
Plan Number: D248

Floor Plan
Basement



Elevation A

Available elevations:



Elevation A



Elevation B



Elevation C

Approx. square feet: 2,800
Stories: 1
Bedrooms: 3 - 5
Garage: 3-car
Plan Number: D248

The ranch-style Deborah plan offers a spacious great room with optional fireplace that flows into a well-appointed kitchen with center island, walk-in pantry and optional professional features. You'll also appreciate the quiet study, relaxing covered patio and luxurious master suite with beautiful bay window. Personalization options include a charming casita with bedroom, living room and full bath.

COMMUNITY LOCATION
6746 South Biloxi Court
Aurora, CO 80016
TBD

HOME GALLERY
8000 East Bellview Avenue, Suite B-90
Greenwood Village, CO 80111
888-402-4663



COMMUNITY LOCATION
6746 South Biloxi Court
Aurora, CO 80016
TBD

HOME GALLERY
8000 East Bellview Avenue, Suite B-90
Greenwood Village, CO 80111
888-402-4663

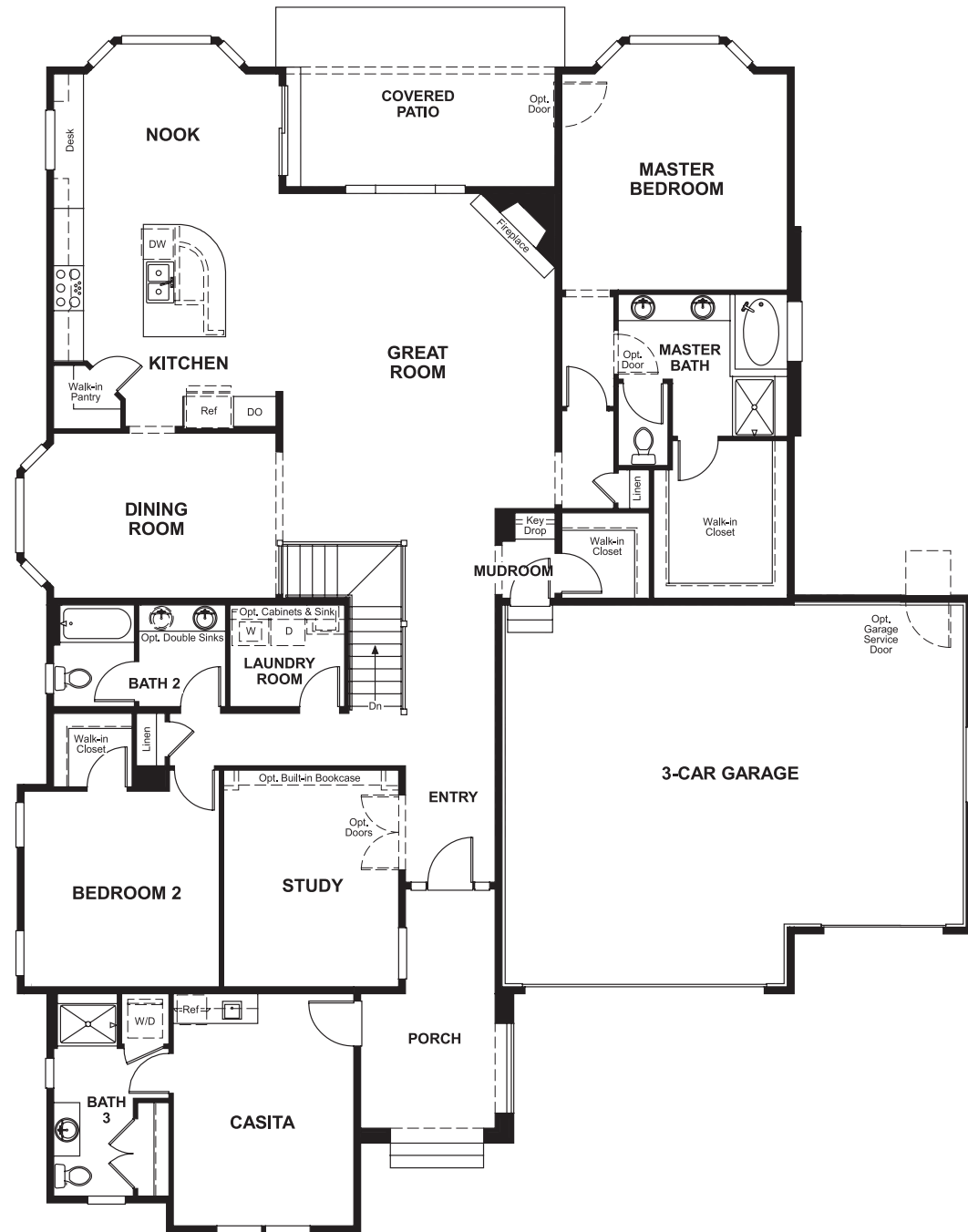


The Summit at Tallyn's Reach
DEBORAH

Approx. square feet: 2,800
Stories: 1
Bedrooms: 3 - 5

Garage: 3-car
Plan Number: D248

Floor Plan
First Floor



Floor Plan
First Floor Options

