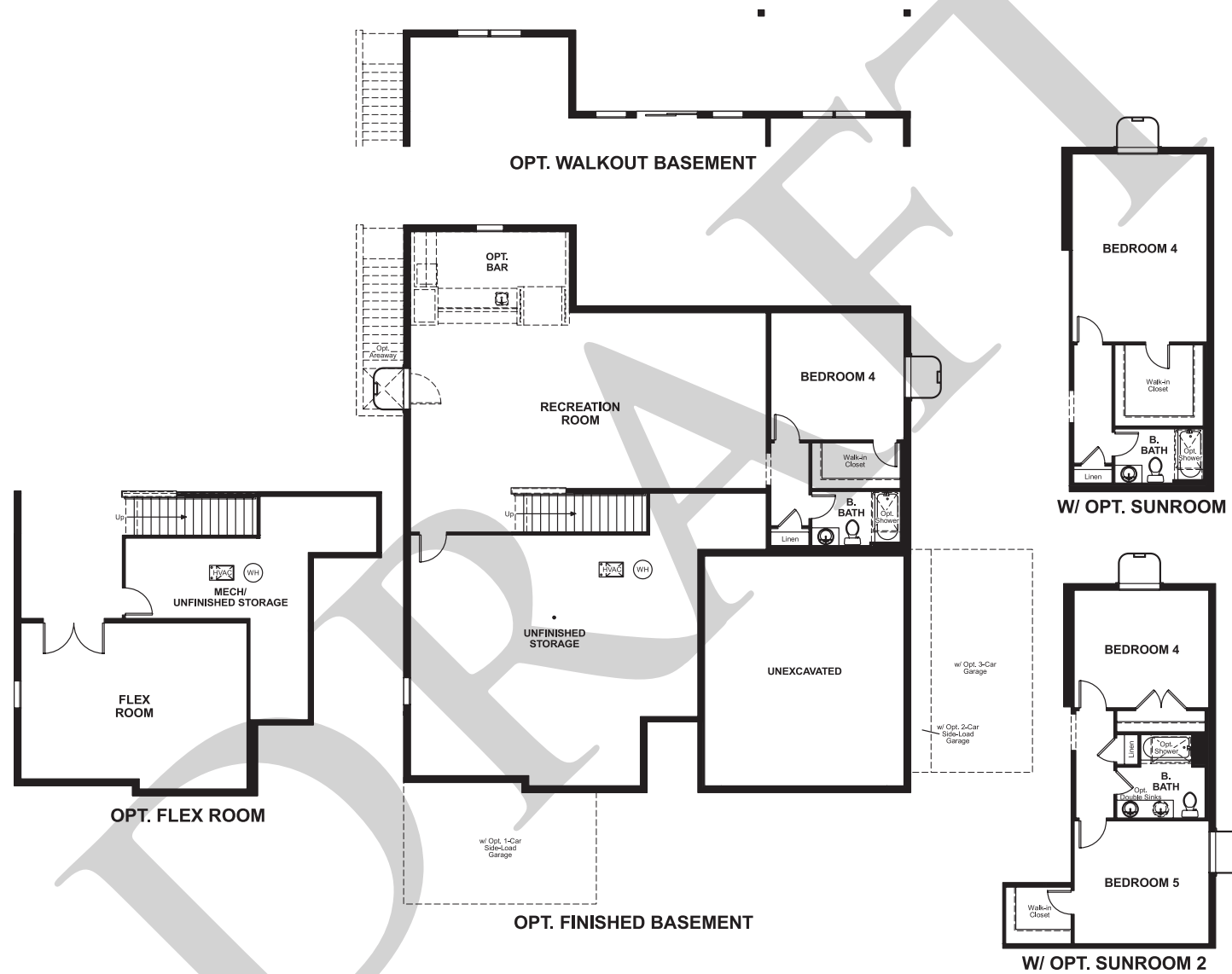


DECKER

Approx. square feet: 2,000  
Stories: 1  
Bedrooms: 2 - 4

Garage: 2- to 3-car  
Plan Number: M20D

Floor Plan  
Basement



DECKER

Approx. square feet: 2,000  
Stories: 1  
Bedrooms: 2 - 4  
Garage: 2- to 3-car  
Plan Number: M20D



Elevation A

Available elevations:



Elevation A



Elevation B



Elevation C



Elevation D



Elevation E



Elevation F

Highlights of the ranch-style Decker plan include a private study, a spacious great room and an impressive corner kitchen with a walk-in pantry, center island and comfortable breakfast nook. The elegant master suite boasts a private bath with double sinks and an expansive walk-in closet, and the generous second bedroom and full bath are perfect for family or guests. Abundant personalization options, including a gourmet kitchen, sunroom, finished basement and covered patio truly allow you to make this home your own.

HOME GALLERY

11393 Government Center Parkway  
Fairfax, VA 22030  
888-891-7349



HOME GALLERY

11393 Government Center Parkway  
Fairfax, VA 22030  
888-891-7349

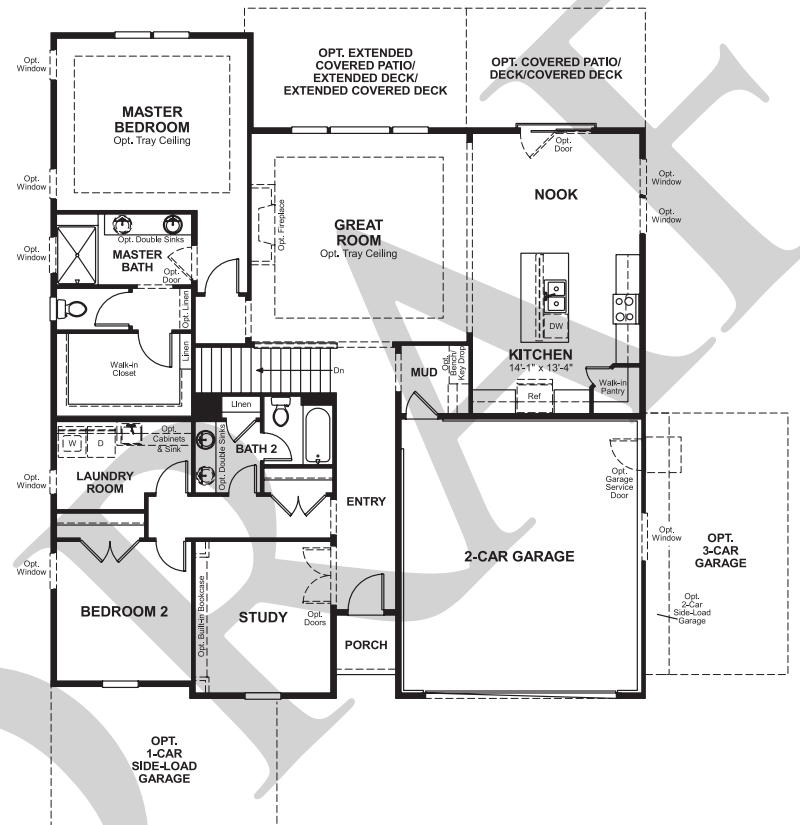


**DECKER**

**Approx. square feet:** 2,000  
**Stories:** 1  
**Bedrooms:** 2 - 4

**Garage:** 2- to 3-car  
**Plan Number:** M20D

**Floor Plan**  
Main Floor



**Floor Plan**  
Main Floor Options

