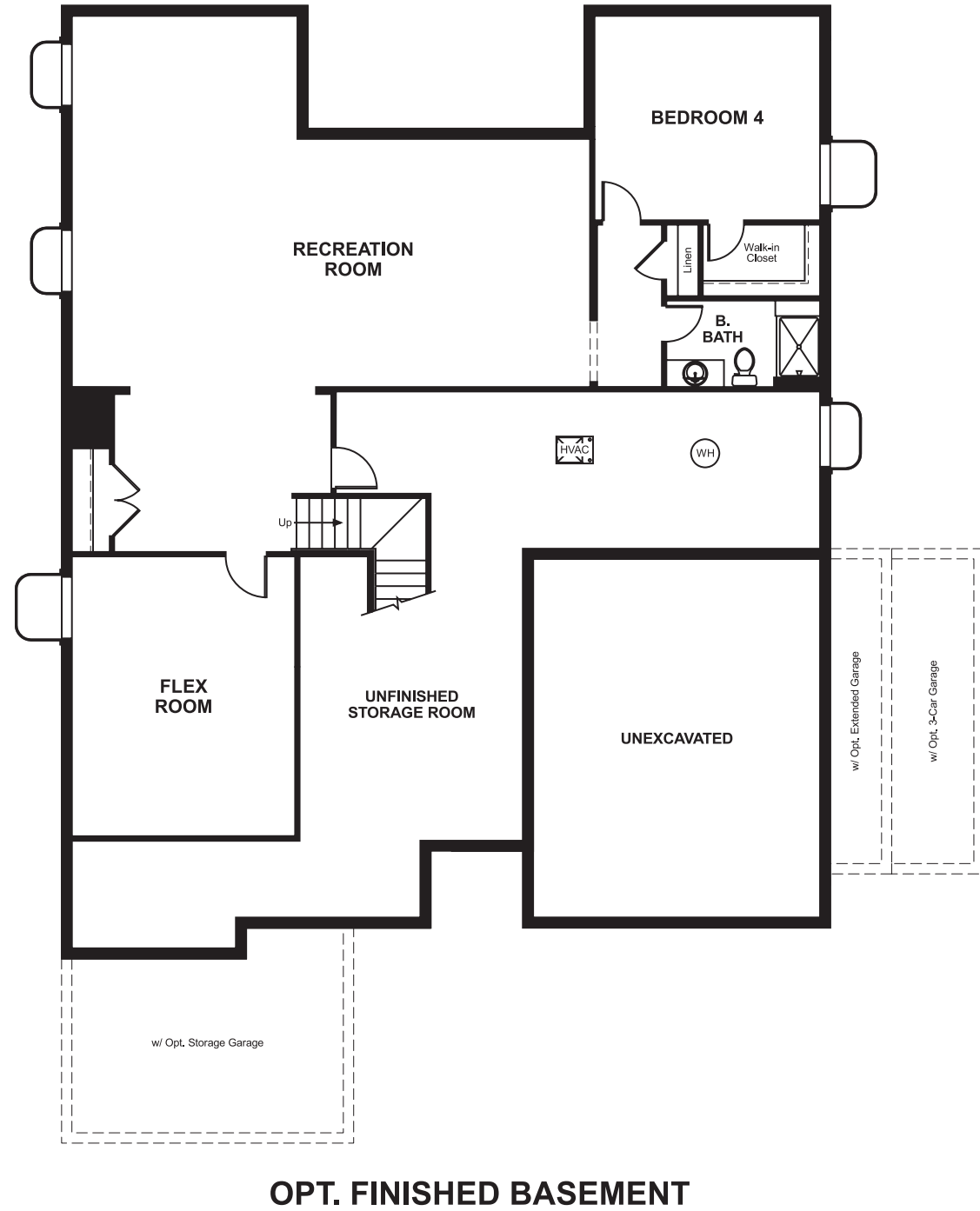


Copperleaf  
**DELANEY**

**Approx. square feet:** 2,350  
**Stories:** 1  
**Bedrooms:** 2 - 3

**Garage:** 2- to 3-car  
**Plan Number:** D22D

**Floor Plan**  
Basement



**COMMUNITY LOCATION**  
22320 East Chenango Drive  
Aurora, CO 80015  
303-690-1629

**HOME GALLERY**  
8000 East Bellview Avenue Unit C-12  
Greenwood Village, CO 80111  
303-850-5750



Copperleaf  
**DELANEY**

**Approx. square feet:** 2,350  
**Stories:** 1  
**Bedrooms:** 2 - 3  
**Garage:** 2- to 3-car  
**Plan Number:** D22D

This ranch home showcases an inviting covered porch and formal dining room. A beautiful kitchen includes a handy center island, walk-in pantry and breakfast nook. Opt for a quiet study or an optional third bedroom. The luxurious master suite includes a generous walk-in closet. A full unfinished basement is also available.



**Elevation A**

**Available elevations:**



**Elevation A**



**Elevation B**



**Elevation C**



**Elevation D**

**COMMUNITY LOCATION**  
22320 East Chenango Drive  
Aurora, CO 80015  
303-690-1629

**HOME GALLERY**  
8000 East Bellview Avenue Unit C-12  
Greenwood Village, CO 80111  
303-850-5750



Copperleaf  
**DELANEY**

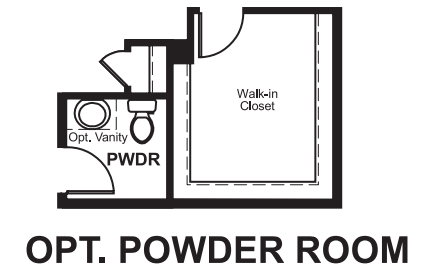
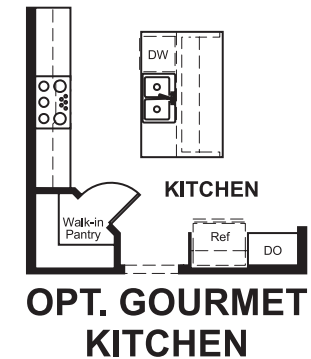
Approx. square feet: 2,350  
Stories: 1  
Bedrooms: 2 - 3

Garage: 2- to 3-car  
Plan Number: D22D

**Floor Plan**  
Main Floor



**Floor Plan**  
Main Floor Options



**THIS PLAN'S PROJECTED HERS® INDEX = 60\***  
Projected Rating Based on Plans – Field Confirmation Required

**How does this floor plan rate?**  
Take a look: 100 = Standard new home\* 130 = Typical resale home\*\*  
The lower the number, the better! Refer to the RESNET® HERS index brochure or go to [www.RESNET.us](http://www.RESNET.us) for details.

**What's a HERS® Index?** HERS stands for Home Energy Rating System, a system created by RESNET® to measure home energy efficiency. A Projected HERS index or rating is a computer simulation performed prior to construction by a third-party HERS rater using RESNET-accredited rating software, rated feature and specification data derived from home plans, features and specifications, and other data selected or assumed by the rater. The projected HERS index is approximate and is subject to change without notice. Actual results will vary.

\*This information is presented for education purposes only. The HERS index for a confirmed rating will be determined by a third-party HERS rater based on data gathered from on-site observations and, if required, testing of rated features for a home as featured, optioned, located, oriented and/or built.  
+Standard new home is based on the RESNET® Reference Home definition with a HERS® index of 100 (based on the 2006 International Energy Conservation Code).  
++Typical resale home is based on the U.S. Department of Energy definition with a HERS® index of 130.

^RESNET® has developed the HERS® index to indicate the comparative efficiencies of homes. It is no guarantee that energy efficiencies will be achieved.