

Oak Ridge at Crystal Valley
DELANEY

Approx. square feet: 2,350
Stories: 1
Bedrooms: 2 - 4

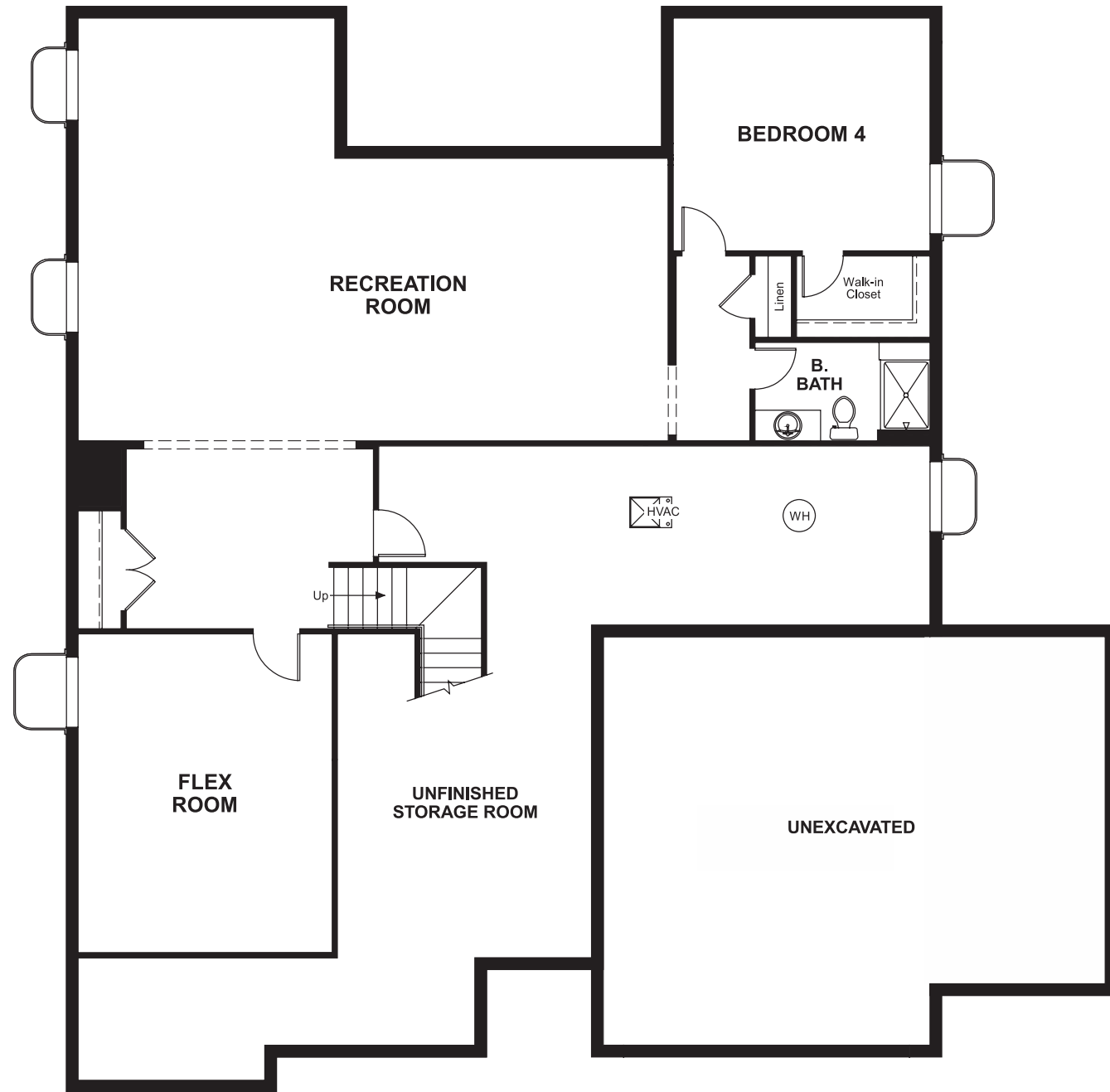
Garage: 3-car
Plan Number: D238

Oak Ridge at Crystal Valley
DELANEY

Approx. square feet: 2,350
Stories: 1
Bedrooms: 2 - 4
Garage: 3-car
Plan Number: D238

This ranch home showcases an inviting covered porch and formal dining room. A beautiful kitchen includes a handy center island, walk-in pantry and breakfast nook. Opt for a quiet study or an optional third bedroom. The luxurious master suite includes a generous walk-in closet. A full unfinished basement is also available.

Floor Plan
Basement



OPT. FINISHED BASEMENT



Elevation A

Available elevations:



Elevation A



Elevation B



Elevation C

COMMUNITY LOCATION
2449 Garganey Drive
Castle Rock, CO 80104
303-660-0950

HOME GALLERY
8000 East Belleview Avenue, Suite C-12
Greenwood Village, CO 80111
888-402-4663



COMMUNITY LOCATION
2449 Garganey Drive
Castle Rock, CO 80104
303-660-0950

HOME GALLERY
8000 East Belleview Avenue, Suite C-12
Greenwood Village, CO 80111
888-402-4663

Oak Ridge at Crystal Valley
DELANEY

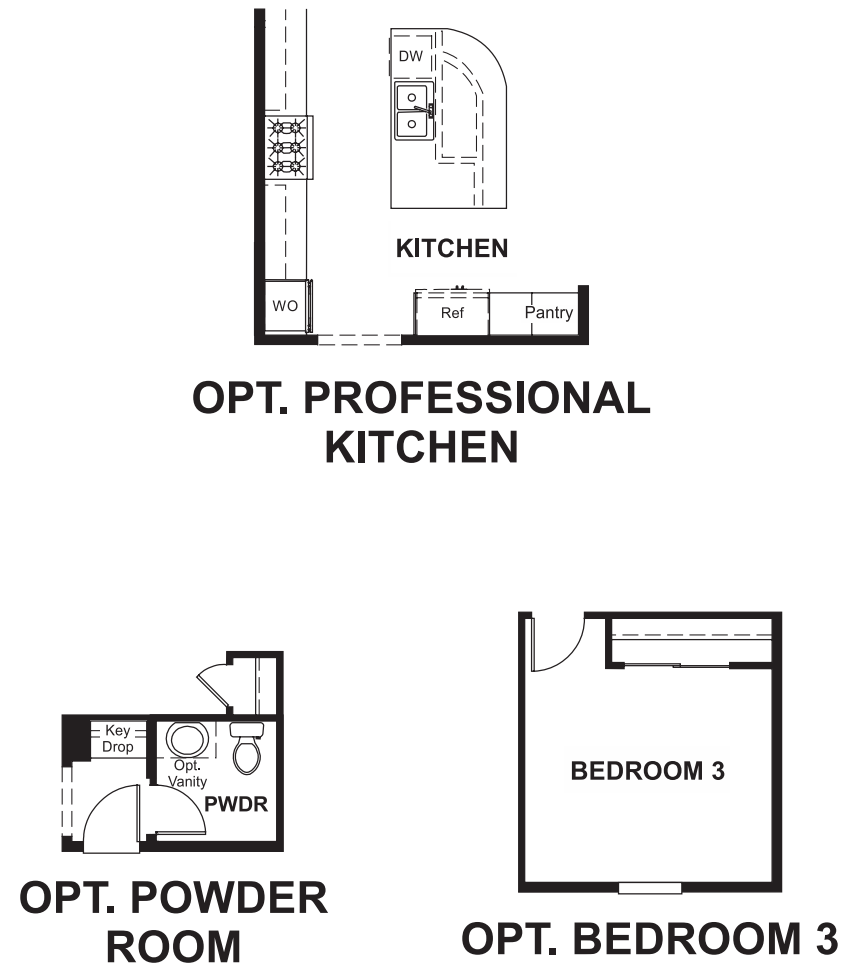
Approx. square feet: 2,350
Stories: 1
Bedrooms: 2 - 4

Garage: 3-car
Plan Number: D238

Floor Plan
Main Floor



Floor Plan
Main Floor Options



**THIS PLAN'S PROJECTED
HERS® INDEX = 56***
Projected Rating Based on Plans – Field Confirmation Required

How does this floor plan rate?
Take a look: **100** = Standard new home* **130** = Typical resale home**
The lower the number, the better! Refer to the RESNET® HERS index brochure or go to www.RESNET.us for details.

What's a HERS® Index? HERS stands for Home Energy Rating System, a system created by RESNET® to measure home energy efficiency.[^]
A Projected HERS index or rating is a computer simulation performed prior to construction by a third-party HERS rater using RESNET-accredited rating software, rated feature and specification data derived from home plans, features and specifications, and other data selected or assumed by the rater. The projected HERS index is approximate and is subject to change without notice. Actual results will vary.

*This information is presented for education purposes only. The HERS index for a confirmed rating will be determined by a third-party HERS rater based on data gathered from on-site observations and, if required, testing of rated features for a home as featured, optioned, located, oriented and/or built.
+Standard new home is based on the RESNET® Reference Home definition with a HERS® index of 100 (based on the 2006 International Energy Conservation Code).
++Typical resale home is based on the U.S. Department of Energy definition with a HERS® index of 130.

[^]RESNET® has developed the HERS® index to indicate the comparative efficiencies of homes. It is no guarantee that energy efficiencies will be achieved.