

DELANEY



Elevation A

Approx. square feet: 2,250

Stories: 1

Bedrooms: 3 - 4

Garage: 2- to 3-car

Plan Number: F22D

The foyer of this Delaney home leads to a generous great room and kitchen with walk-in pantry and center island. Also, relax in the master suite—tucked away for added privacy. The covered patio in the back completes this beautiful home.

Available elevations:



Elevation A



Elevation B



Elevation C - Shown w/ optional stone



Elevation D



Elevation E



Elevation F

HOME GALLERY
762 South Northlake Boulevard
Altamonte Springs, FL 32701

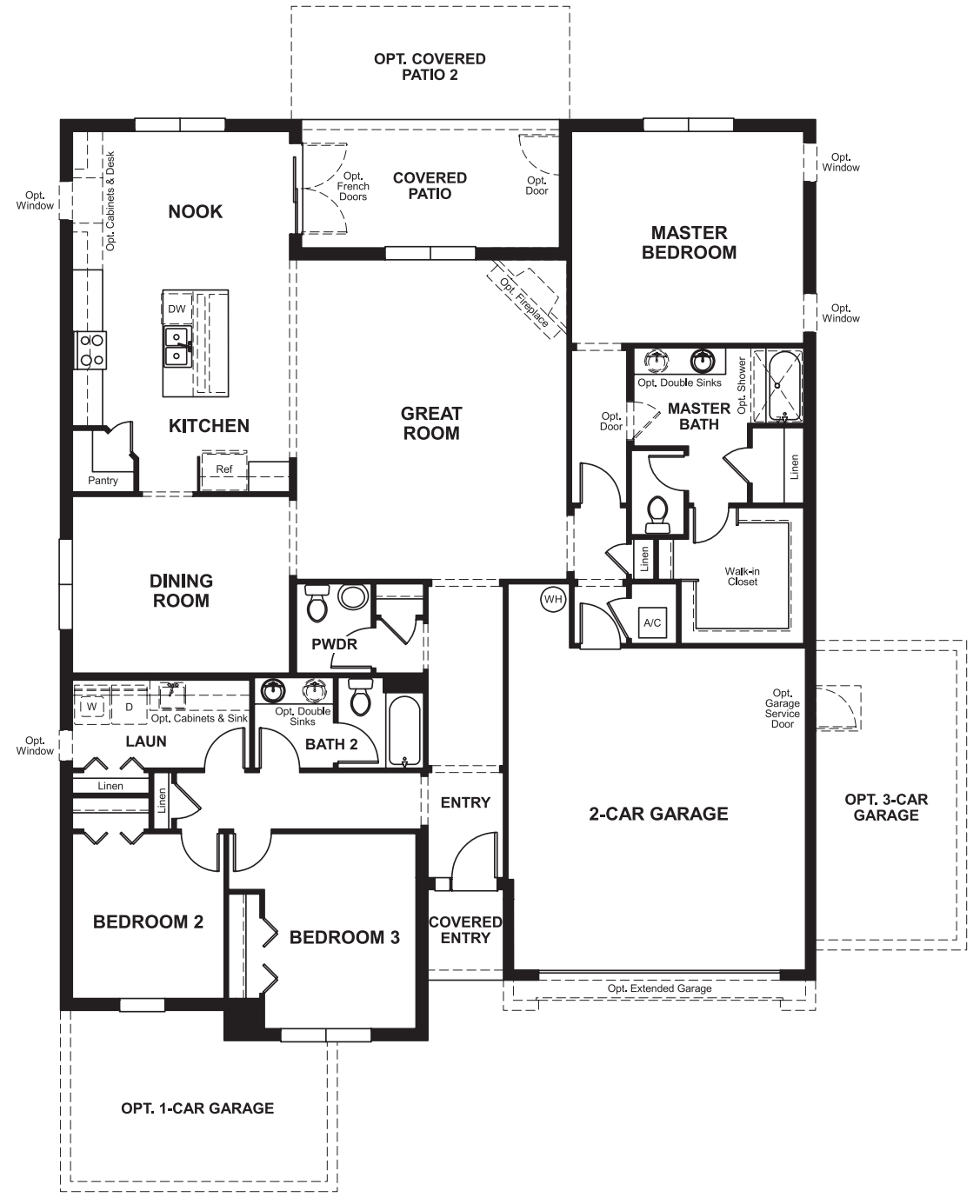
HOME GALLERY
762 South Northlake Boulevard
Altamonte Springs, FL 32701

DELANEY

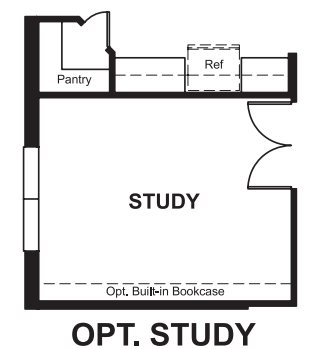
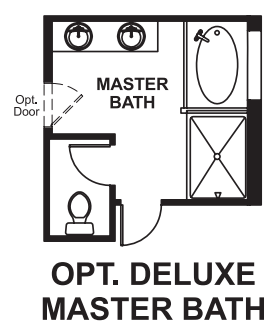
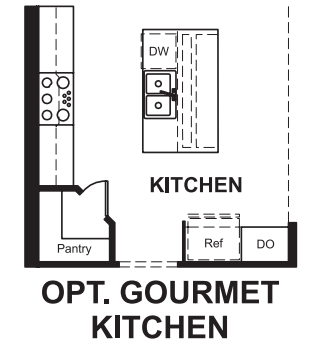
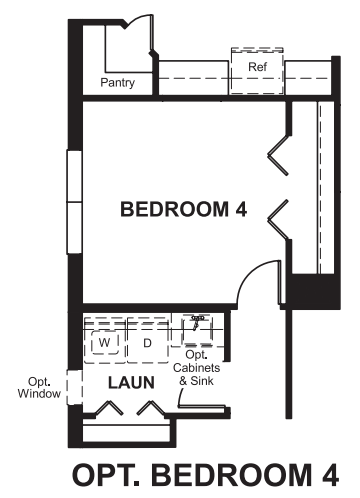
Approx. square feet: 2,250
Stories: 1
Bedrooms: 3 - 4

Garage: 2- to 3-car
Plan Number: F22D

Floor Plan
Main Floor



Floor Plan
Main Floor Options



THIS PLAN'S PROJECTED HERS® INDEX = 69*
Projected Rating Based on Plans – Field Confirmation Required

How does this floor plan rate?
Take a look: **100** = Standard new home* **130** = Typical resale home**
The lower the number, the better! Refer to the RESNET® HERS index brochure or go to www.RESNET.us for details.

What's a HERS® Index? HERS stands for Home Energy Rating System, a system created by RESNET® to measure home energy efficiency.[^]
A Projected HERS index or rating is a computer simulation performed prior to construction by a third-party HERS rater using RESNET-accredited rating software, rated feature and specification data derived from home plans, features and specifications, and other data selected or assumed by the rater. The projected HERS index is approximate and is subject to change without notice. Actual results will vary.

*This information is presented for education purposes only. The HERS index for a confirmed rating will be determined by a third-party HERS rater based on data gathered from on-site observations and, if required, testing of rated features for a home as featured, optioned, located, oriented and/or built.
+Standard new home is based on the RESNET® Reference Home definition with a HERS® index of 100 (based on the 2006 International Energy Conservation Code).
**Typical resale home is based on the U.S. Department of Energy definition with a HERS® index of 130.

[^]RESNET® has developed the HERS® index to indicate the comparative efficiencies of homes. It is no guarantee that energy efficiencies will be achieved.