

Gold Ridge (Oliver Canyon)
DENISE



Elevation A

Approx. square feet: 2,400
Stories: 1
Bedrooms: 3 - 5
Garage: 2-car
Plan Number: N235

The ranch-style Denise plan offers a beautiful courtyard entry and ample living space with an open dining room, spacious great room and corner kitchen with center island and walk-in pantry. The plan also features a relaxing master suite with a large walk-in closet, a private study with dramatic double doors and a teen room. Personalization options include a second master suite, deluxe bath, covered patio and more!

Available elevations:



Elevation A



Elevation B



Elevation C

COMMUNITY LOCATION

5290 Klingsell Place
 Fairfield, CA 94533
 707-416-4992

HOME GALLERY

5274 Klingsell Place
 Fairfield, CA 94533
 By Appointment Only



COMMUNITY LOCATION

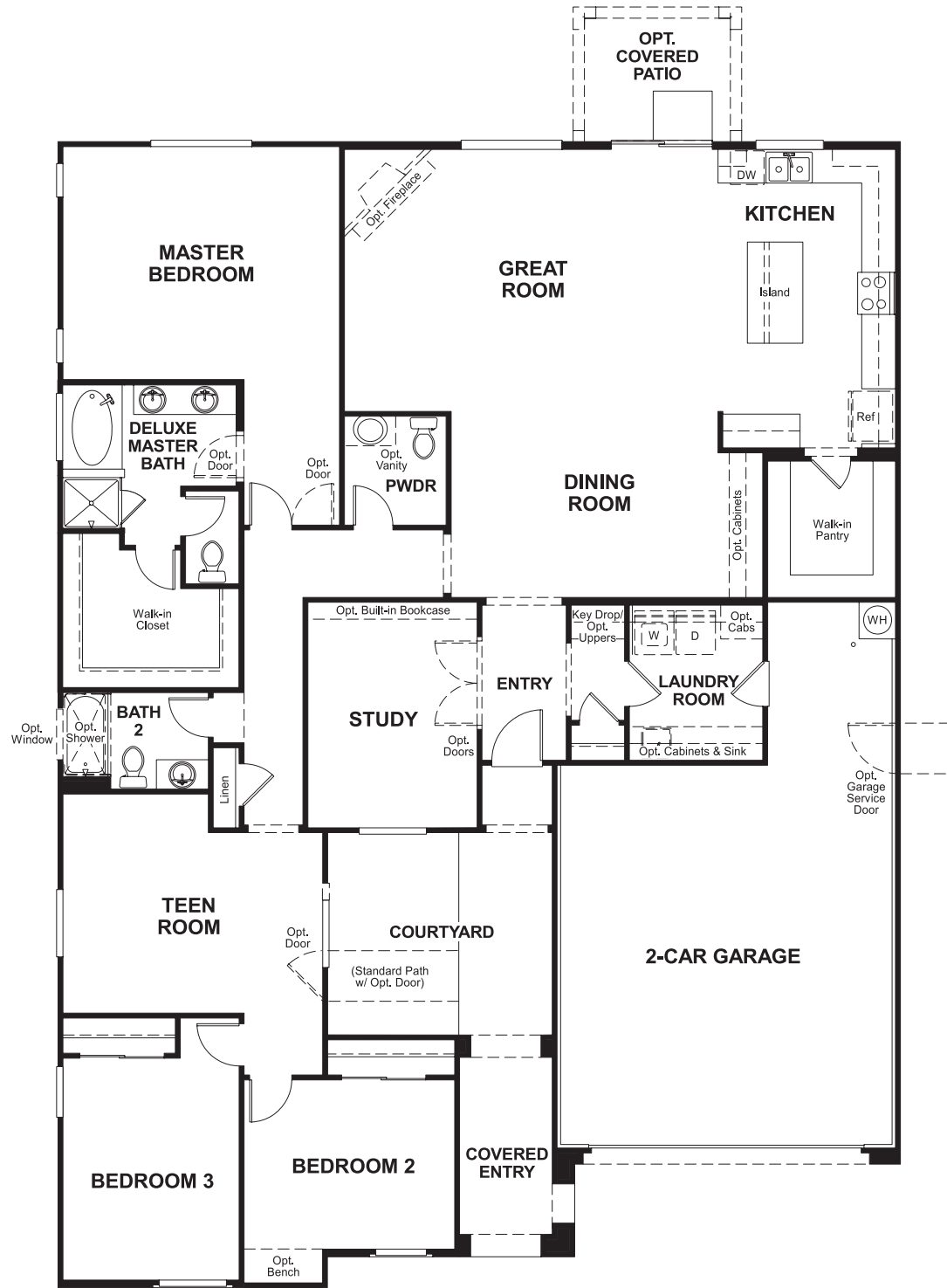
5290 Klingsell Place
 Fairfield, CA 94533
 707-416-4992

HOME GALLERY

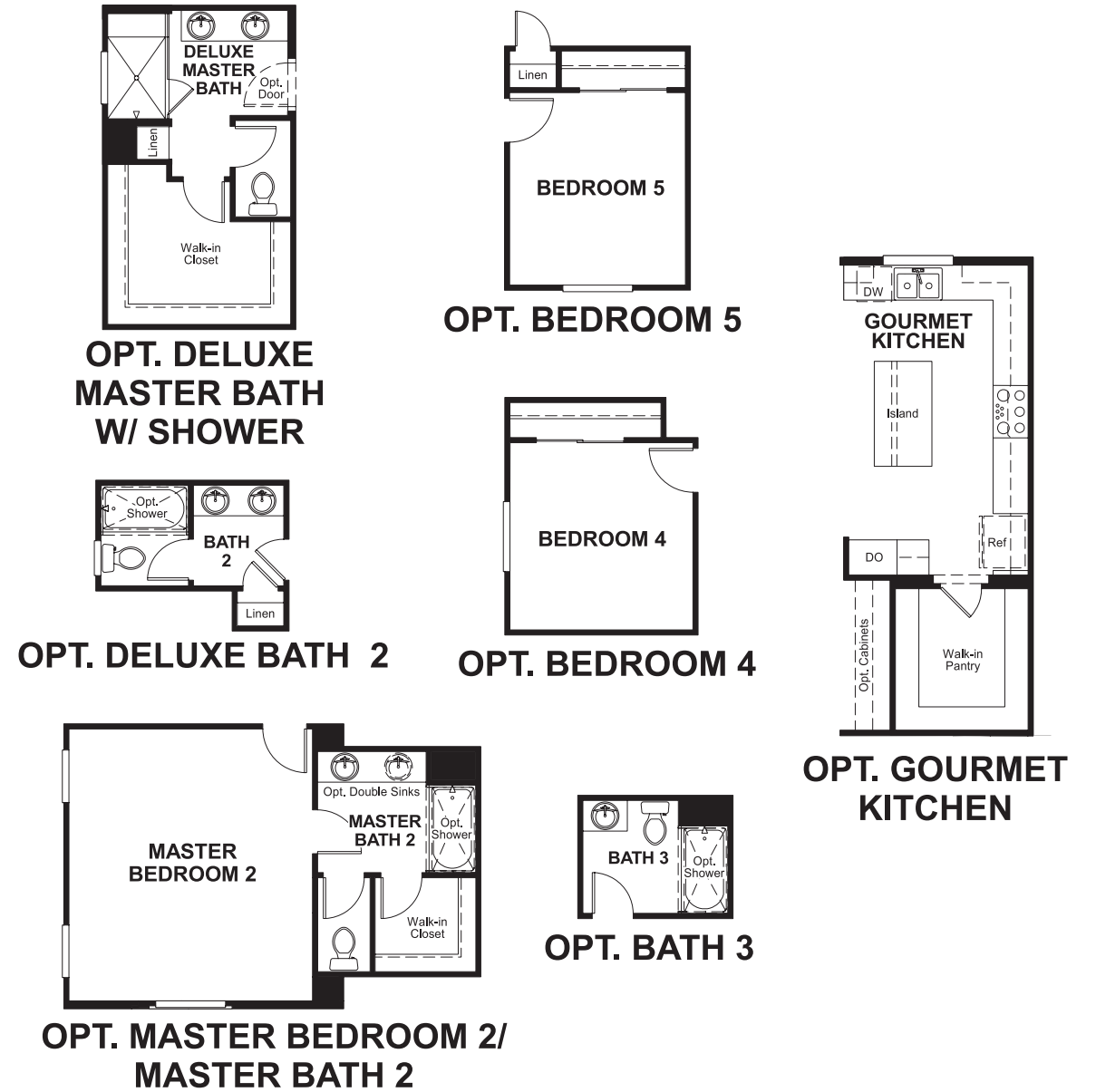
5274 Klingsell Place
 Fairfield, CA 94533
 By Appointment Only



Floor Plan
Main Floor



Floor Plan
Main Floor Options



THIS PLAN'S PROJECTED HERS® INDEX = 76*
Projected Rating Based on Plans – Field Confirmation Required

How does this floor plan rate?
Take a look: **100** = Standard new home* **130** = Typical resale home**
The lower the number, the better! Refer to the RESNET® HERS index brochure or go to www.RESNET.us for details.

What's a HERS® Index? HERS stands for Home Energy Rating System, a system created by RESNET® to measure home energy efficiency. A Projected HERS index or rating is a computer simulation performed prior to construction by a third-party HERS rater using RESNET-accredited rating software, rated feature and specification data derived from home plans, features and specifications, and other data selected or assumed by the rater. The projected HERS index is approximate and is subject to change without notice. Actual results will vary.

*This information is presented for education purposes only. The HERS index for a confirmed rating will be determined by a third-party HERS rater based on data gathered from on-site observations and, if required, testing of rated features for a home as featured, optioned, located, oriented and/or built.
+Standard new home is based on the RESNET® Reference Home definition with a HERS® index of 100 (based on the 2006 International Energy Conservation Code).
**Typical resale home is based on the U.S. Department of Energy definition with a HERS® index of 130.

^RESNET® has developed the HERS® index to indicate the comparative efficiencies of homes. It is no guarantee that energy efficiencies will be achieved.