

DILLON



Elevation A

Approx. square feet: 3,100

Stories: 2

Bedrooms: 4 - 5

Garage: 3-car

Plan Number: J30D

With a two-story great room, elegant formal dining room and a private study with double doors, the Dillon is sure to impress. The large, open kitchen features a center island and a generous walk-in pantry. The luxurious upper-level master bedroom includes a master bath and a spacious walk-in closet.

Available elevations:



Elevation A



Elevation B



Elevation C - shown with optional stone



Elevation D



Elevation E



Elevation F



Elevation G



Elevation H

HOME GALLERY
1560 Wells Road, Building A
Orange Park, FL 32073
800-221-3014

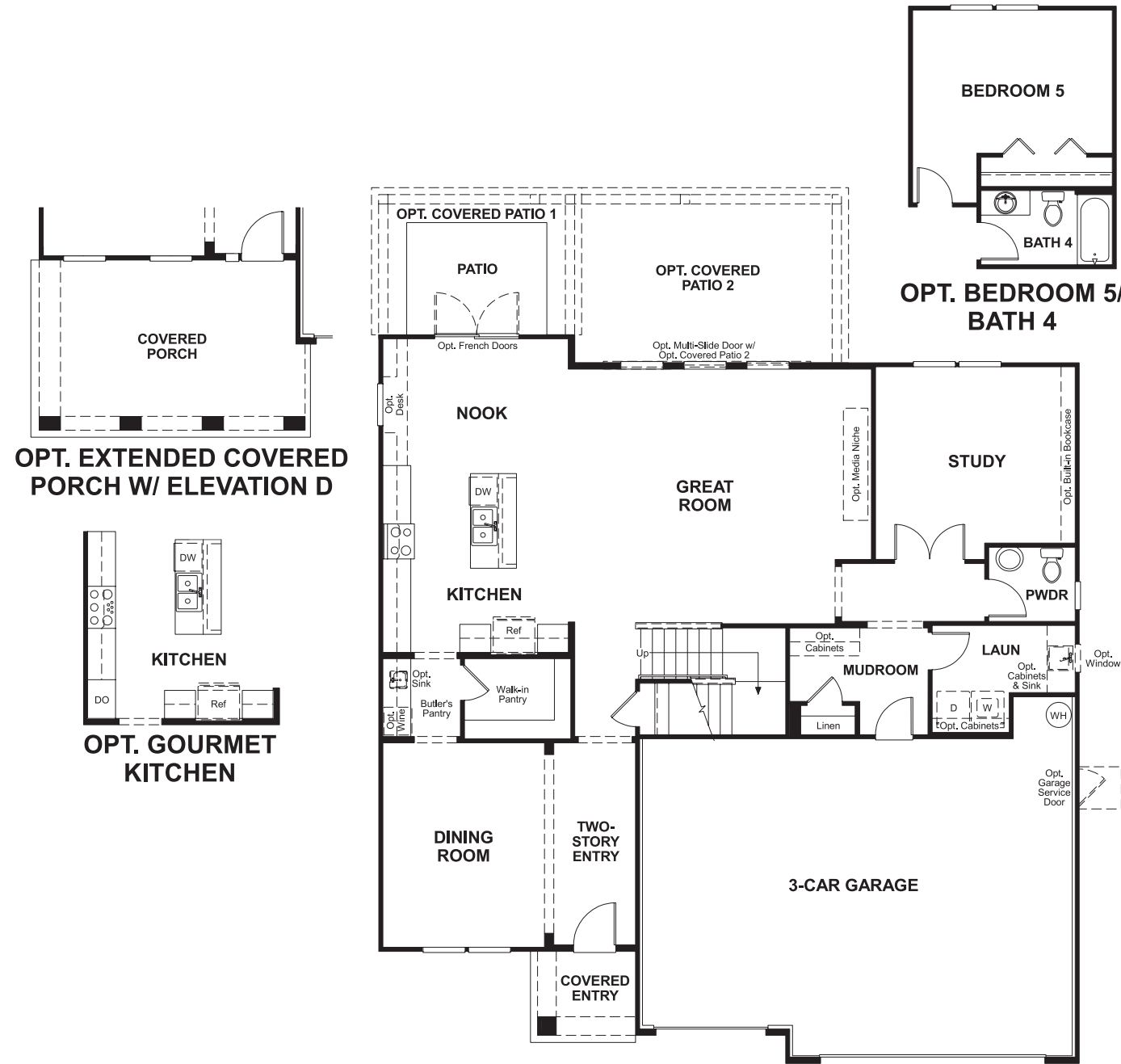
HOME GALLERY
1560 Wells Road, Building A
Orange Park, FL 32073
800-221-3014

DILLON

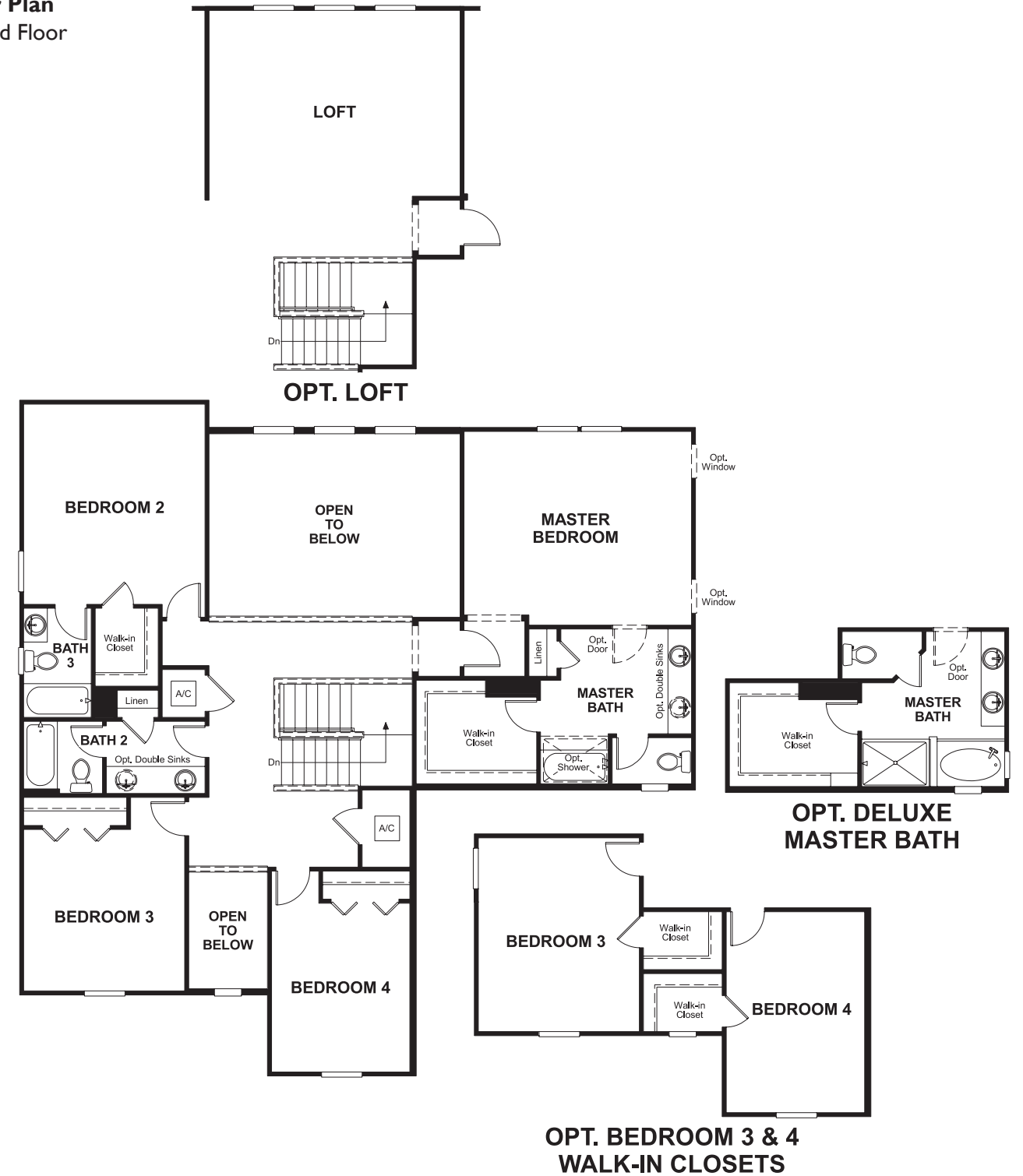
Approx. square feet: 3,100
Stories: 2
Bedrooms: 4 - 5

Garage: 3-car
Plan Number: J30D

Floor Plan Main Floor



Floor Plan Second Floor



**THIS PLAN'S PROJECTED
HERS® INDEX = 61** *
Projected Rating Based on Plans – Field Confirmation Required

How does this floor plan rate?
Take a look: **100** = Standard new home* **130** = Typical resale home**
The lower the number, the better! Refer to the RESNET® HERS index brochure or go to www.RESNET.us for details.

What's a HERS® Index? HERS stands for Home Energy Rating System, a system created by RESNET® to measure home energy efficiency.[^]
A Projected HERS index or rating is a computer simulation performed prior to construction by a third-party HERS rater using RESNET-accredited rating software, rated feature and specification data derived from home plans, features and specifications, and other data selected or assumed by the rater. The projected HERS index is approximate and is subject to change without notice. Actual results will vary.

*This information is presented for education purposes only. The HERS index for a confirmed rating will be determined by a third-party HERS rater based on data gathered from on-site observations and, if required, testing of rated features for a home as featured, optioned, located, oriented and/or built.
+Standard new home is based on the RESNET® Reference Home definition with a HERS® index of 100 (based on the 2006 International Energy Conservation Code).
++Typical resale home is based on the U.S. Department of Energy definition with a HERS® index of 130.

[^]RESNET® has developed the HERS® index to indicate the comparative efficiencies of homes. It is no guarantee that energy efficiencies will be achieved.