

Crismon Heights

DOMINIC



Elevation A

Available elevations:



Elevation A



Elevation B



Elevation C

Approx. square feet: 2,500

Stories: 1

Bedrooms: 3 - 4

Garage: 3-car

Plan Number: P25B

From the comfortable study with optional French doors and built-in bookcase to the covered back patio, this charming ranch plan is the perfect place to relax at the end of a busy day. Enjoy a spacious great room with optional corner fireplace, a sunny kitchen with two walk-in pantries and an inviting breakfast nook overlooking the patio.



COMMUNITY LOCATION

21908 East Camacho Road
Queen Creek, AZ 85142
877-444-1485

HOME GALLERY

16427 North Scottsdale Road, Suite 175
Scottsdale, AZ 85254
877-444-1485



COMMUNITY LOCATION

21908 East Camacho Road
Queen Creek, AZ 85142
877-444-1485

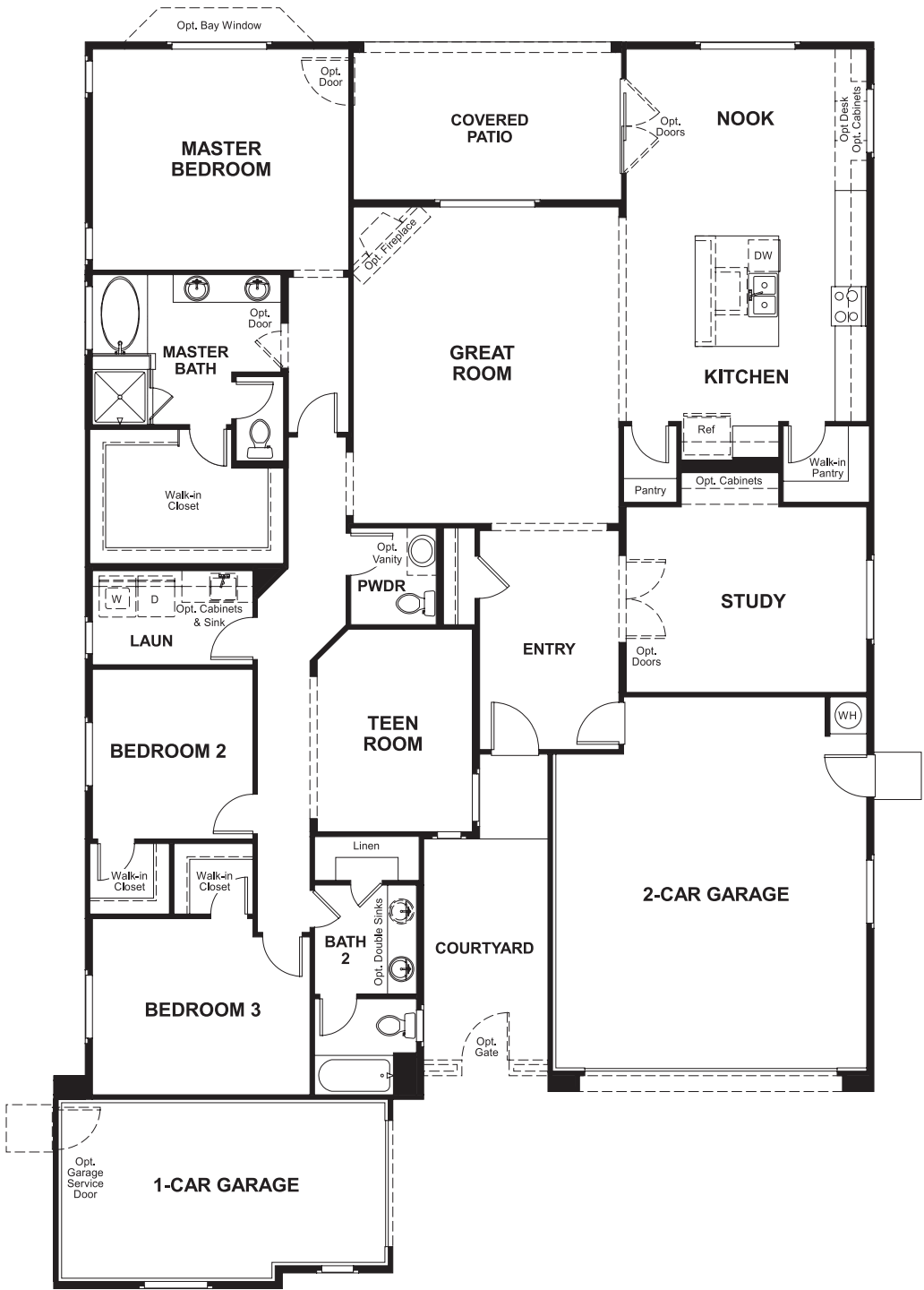
HOME GALLERY

16427 North Scottsdale Road, Suite 175
Scottsdale, AZ 85254
877-444-1485

Crismon Heights
DOMINIC

Approx. square feet: 2,500
Stories: 1
Bedrooms: 3 - 4
Garage: 3-car
Plan Number: P25B

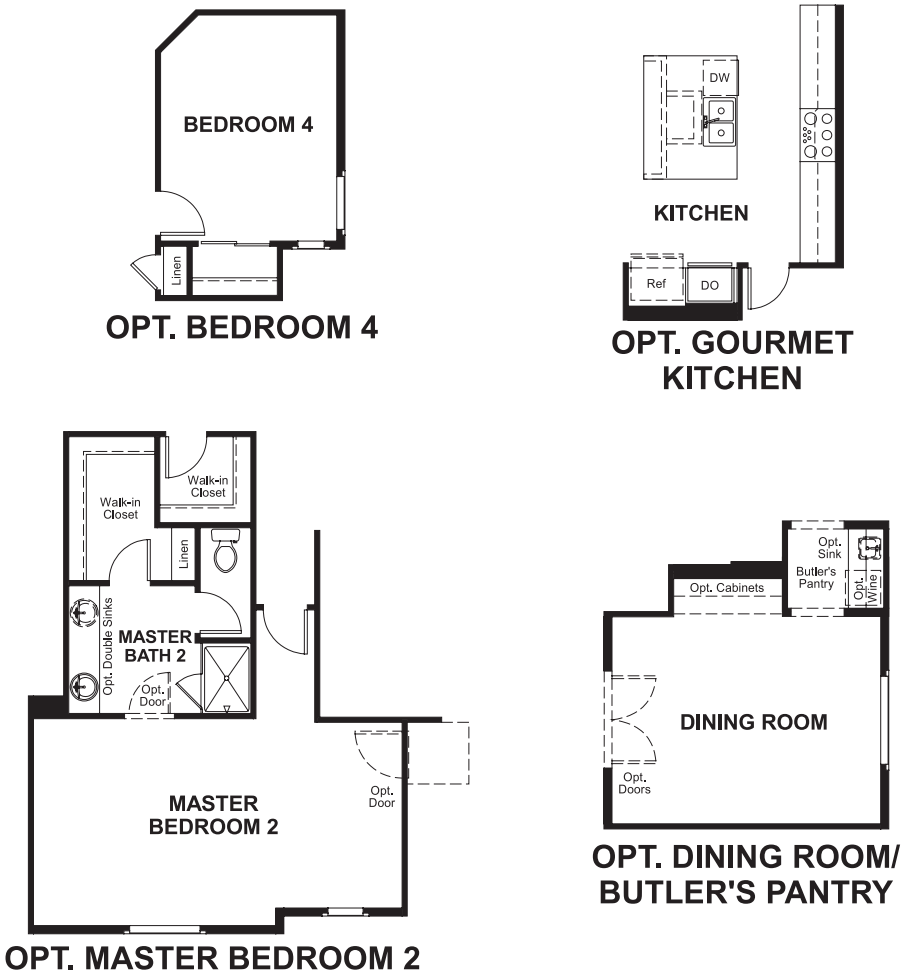
Floor Plan
First Floor



**THIS PLAN'S PROJECTED
HERS® INDEX = 65 ***
Projected Rating Based on Plans – Field Confirmation Required

How does this floor plan rate?
Take a look: **100** = Standard new home* **130** = Typical resale home**
The lower the number, the better! Refer to the RESNET® HERS index brochure or go to www.RESNET.us for details.

Floor Plan
First Floor Options



What's a HERS® Index? HERS stands for Home Energy Rating System, a system created by RESNET® to measure home energy efficiency.^
A Projected HERS index or rating is a computer simulation performed prior to construction by a third-party HERS rater using RESNET-accredited rating software, rated feature and specification data derived from home plans, features and specifications, and other data selected or assumed by the rater. The projected HERS index is approximate and is subject to change without notice. Actual results will vary.

*This information is presented for education purposes only. The HERS index for a confirmed rating will be determined by a third-party HERS rater based on data gathered from on-site observations and, if required, testing of rated features for a home as featured, optioned, located, oriented and/or built.
+Standard new home is based on the RESNET® Reference Home definition with a HERS® index of 100 (based on the 2006 International Energy Conservation Code).
++Typical resale home is based on the U.S. Department of Energy definition with a HERS® index of 130.

^RESNET® has developed the HERS® index to indicate the comparative efficiencies of homes. It is no guarantee that energy efficiencies will be achieved.