

Granite Falls  
**DOMINIC**



**Elevation A**

**Approx. square feet:** 2,500  
**Stories:** 1  
**Bedrooms:** 3 - 4  
**Garage:** 2- to 3-car  
**Plan Number:** L25B

Imagine yourself in this stylish ranch plan: entertaining in the spacious great room with optional corner fireplace, checking off your to-do list in the secluded study, baking in your gourmet kitchen with two walk-in pantries or relaxing in the large master bedroom tucked away at the back of the home.

**Available elevations:**



**Elevation A**



**Elevation B**



**Elevation C**

**COMMUNITY LOCATION**

Iron Mountain Road and Bradley Road  
 Las Vegas, NV 89085  
 702-638-4440

**HOME GALLERY**

7770 South Dean Martin Drive, Suite 308  
 Las Vegas, NV 89139  
 702-617-8400



**COMMUNITY LOCATION**

Iron Mountain Road and Bradley Road  
 Las Vegas, NV 89085  
 702-638-4440

**HOME GALLERY**

7770 South Dean Martin Drive, Suite 308  
 Las Vegas, NV 89139  
 702-617-8400

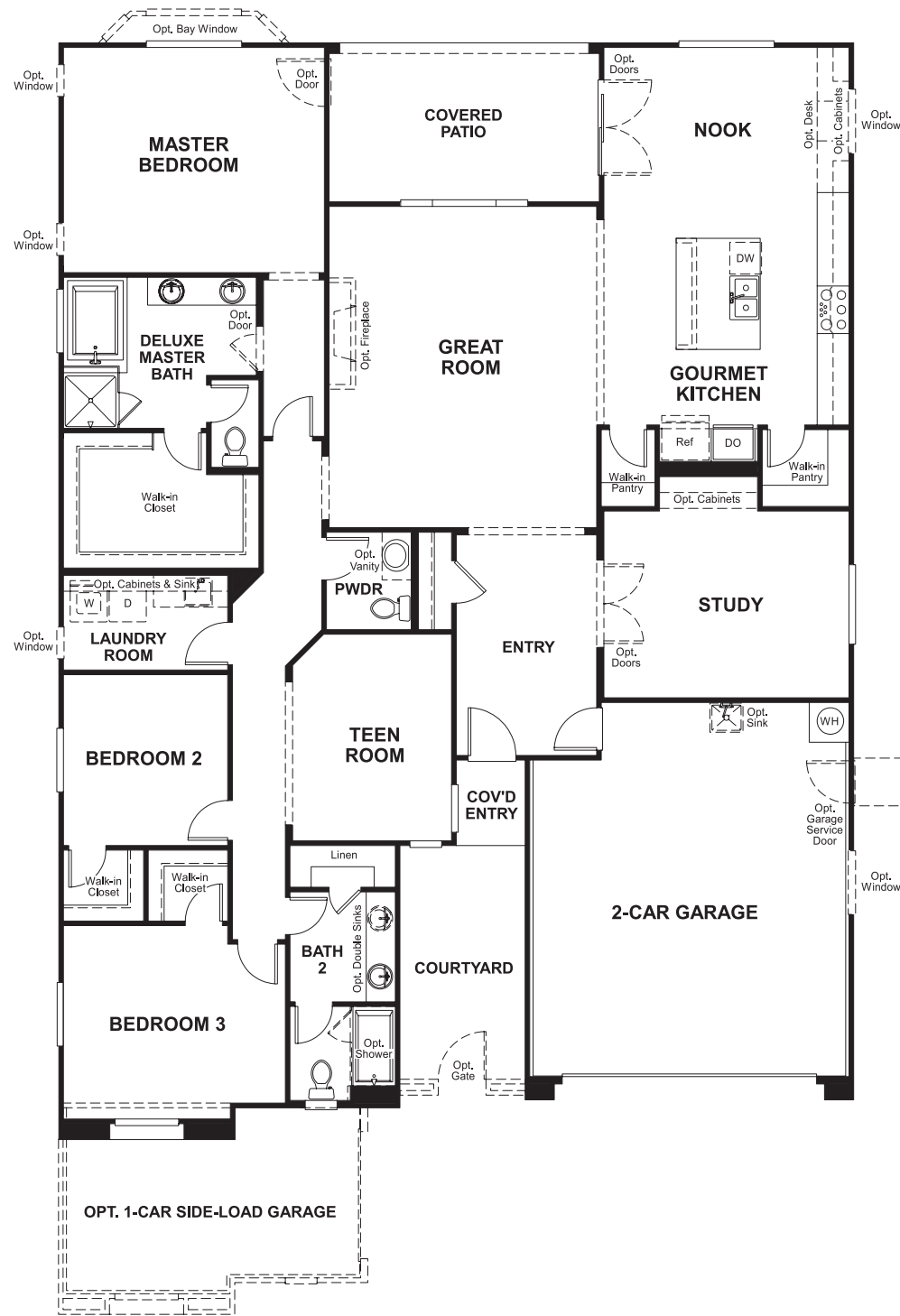


Granite Falls  
**DOMINIC**

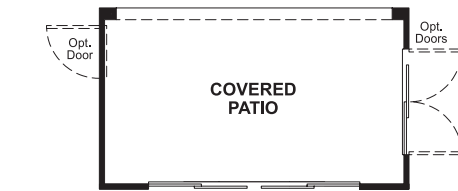
Approx. square feet: 2,500  
Stories: 1  
Bedrooms: 3 - 4

Garage: 2- to 3-car  
Plan Number: L25B

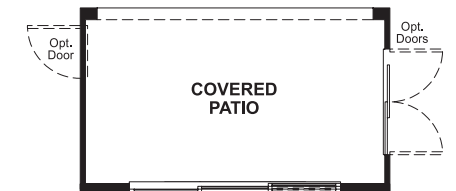
**Floor Plan**  
Main Floor



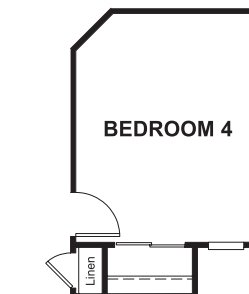
**Floor Plan**  
Main Floor Options



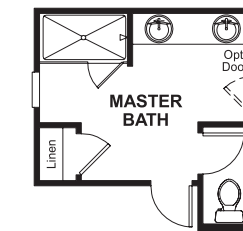
**OPT. 12' CENTER MEET DOOR**



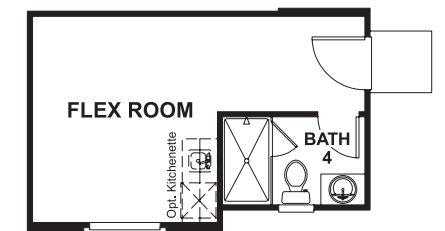
**OPT. MULTI-SLIDE DOOR**



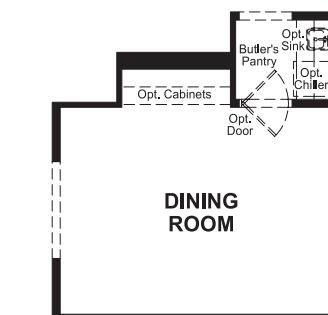
**OPT. BEDROOM 4**



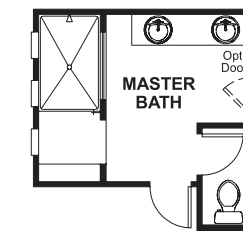
**OPT. MASTER SHOWER**



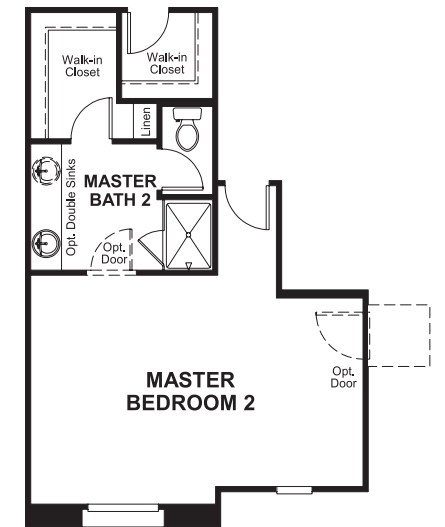
**OPT. FLEX ROOM**



**OPT. DINING ROOM W/ BUTLER'S PANTRY**



**OPT. WALK-IN SHOWER**



**OPT. MASTER BEDROOM 2**

**THIS PLAN'S PROJECTED HERS® INDEX = 66** \*  
Projected Rating Based on Plans – Field Confirmation Required

**How does this floor plan rate?**  
Take a look: 100 = Standard new home\* 130 = Typical resale home\*\*  
The lower the number, the better! Refer to the RESNET® HERS index brochure or go to [www.RESNET.us](http://www.RESNET.us) for details.

**What's a HERS® Index?** HERS stands for Home Energy Rating System, a system created by RESNET® to measure home energy efficiency. A Projected HERS index or rating is a computer simulation performed prior to construction by a third-party HERS rater using RESNET-accredited rating software, rated feature and specification data derived from home plans, features and specifications, and other data selected or assumed by the rater. The projected HERS index is approximate and is subject to change without notice. Actual results will vary.

\*This information is presented for education purposes only. The HERS index for a confirmed rating will be determined by a third-party HERS rater based on data gathered from on-site observations and, if required, testing of rated features for a home as featured, optioned, located, oriented and/or built.  
+Standard new home is based on the RESNET® Reference Home definition with a HERS® index of 100 (based on the 2006 International Energy Conservation Code).  
\*\*Typical resale home is based on the U.S. Department of Energy definition with a HERS® index of 130.

^RESNET® has developed the HERS® index to indicate the comparative efficiencies of homes. It is no guarantee that energy efficiencies will be achieved.