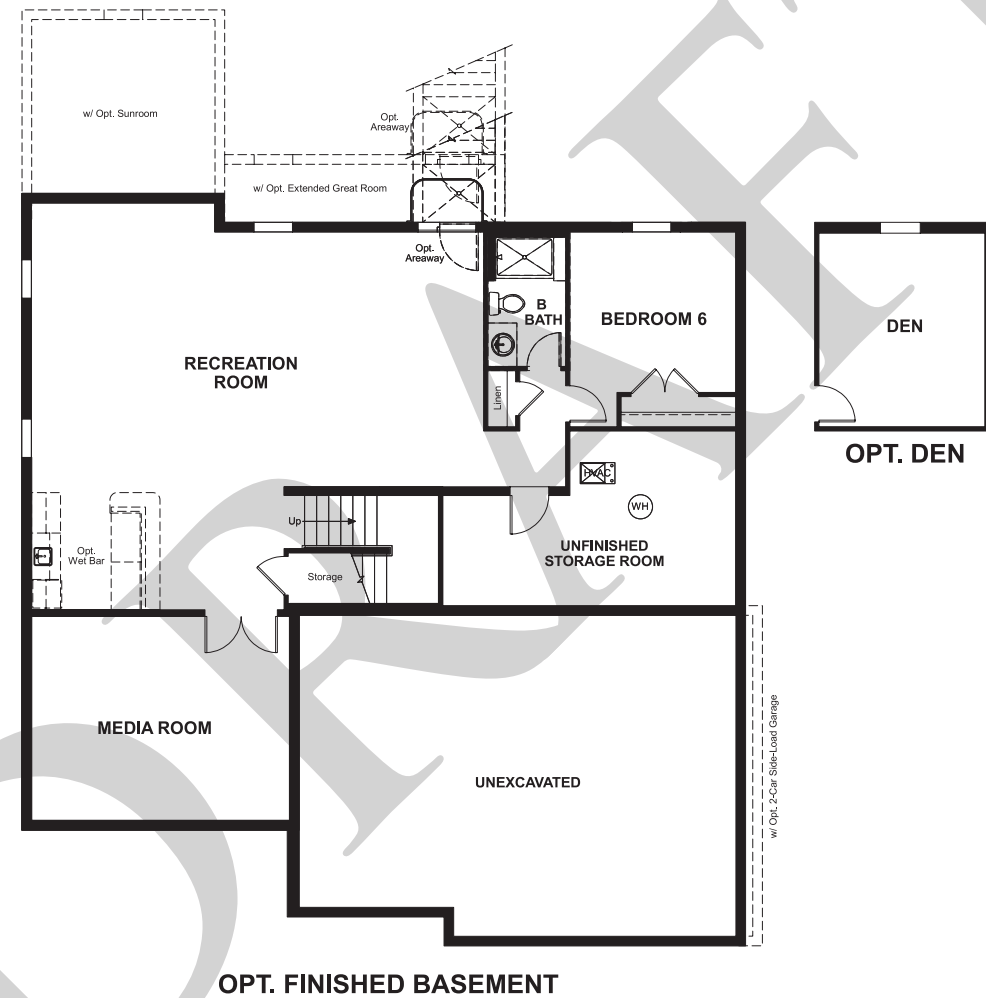


Berryville Glen
DONOVAN

Approx. square feet: 3,100
Stories: 2
Bedrooms: 4 - 6

Garage: 3-car
Plan Number: V639

Floor Plan
Basement



Elevation A

Approx. square feet: 3,100
Stories: 2
Bedrooms: 4 - 6
Garage: 3-car
Plan Number: V639

A dramatic two-story entry welcomes guests to the distinctive Donovan plan. The main floor also includes a study, an expansive great room and a formal dining room with a butler's pantry leading to a well-appointed kitchen with optional gourmet features. Upstairs, relax in the luxurious master suite with optional deluxe bath. Personalize this plan with a wraparound porch, sunroom and finished basement.

Available elevations:



Elevation A



Elevation B



Elevation C



Elevation D



Elevation E



Elevation F

COMMUNITY LOCATION
700 McGuire Circle
Berryville, VA 22611
703-348-0025

HOME GALLERY
11393 Government Center Parkway
Fairfax, VA 22030
703-348-0025



COMMUNITY LOCATION
700 McGuire Circle
Berryville, VA 22611
703-348-0025

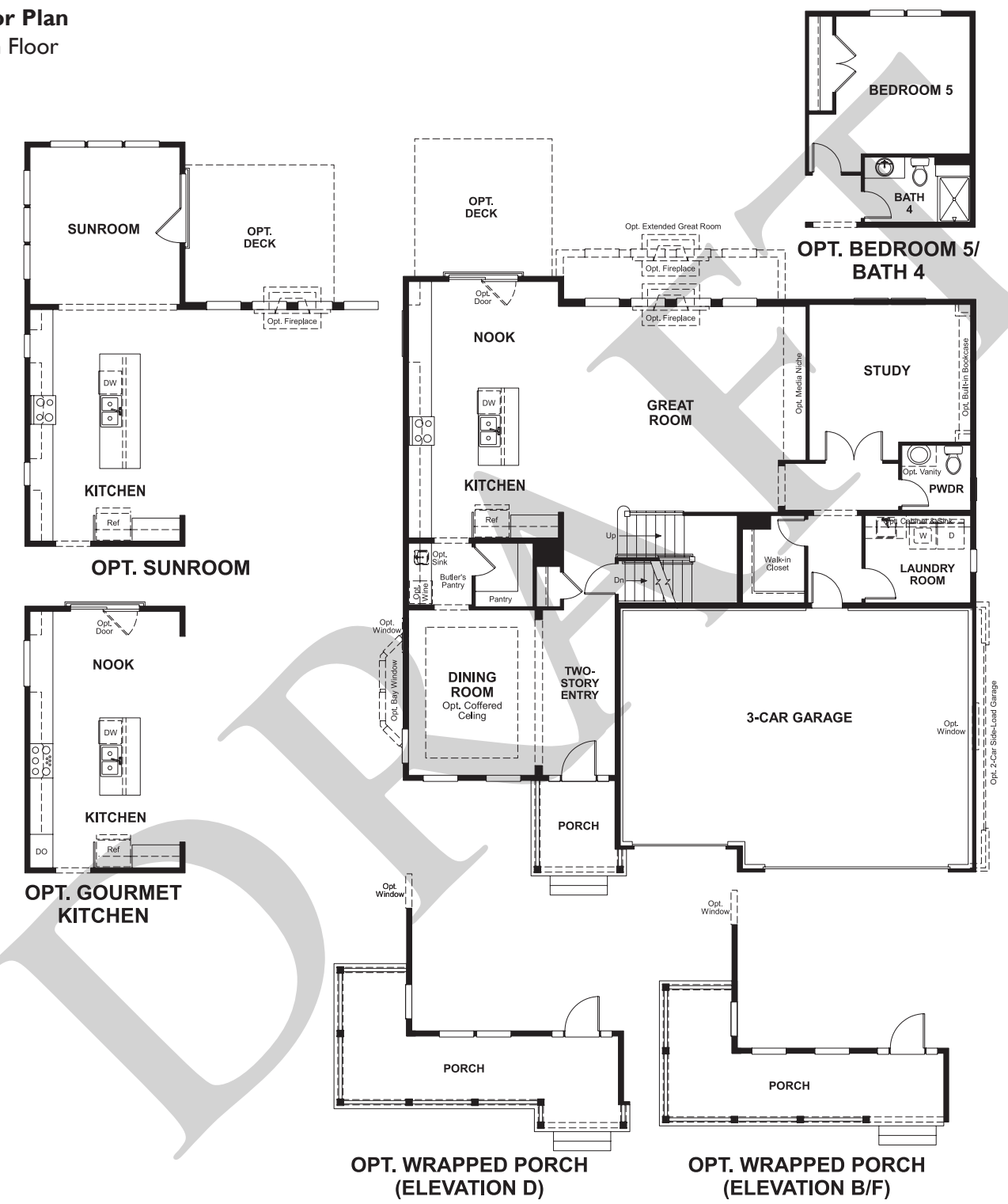
HOME GALLERY
11393 Government Center Parkway
Fairfax, VA 22030
703-348-0025



Berryville Glen
DONOVAN

Approx. square feet: 3,100
Stories: 2
Bedrooms: 4 - 6
Garage: 3-car
Plan Number: V639

Floor Plan
Main Floor



Floor Plan
Second Floor

