

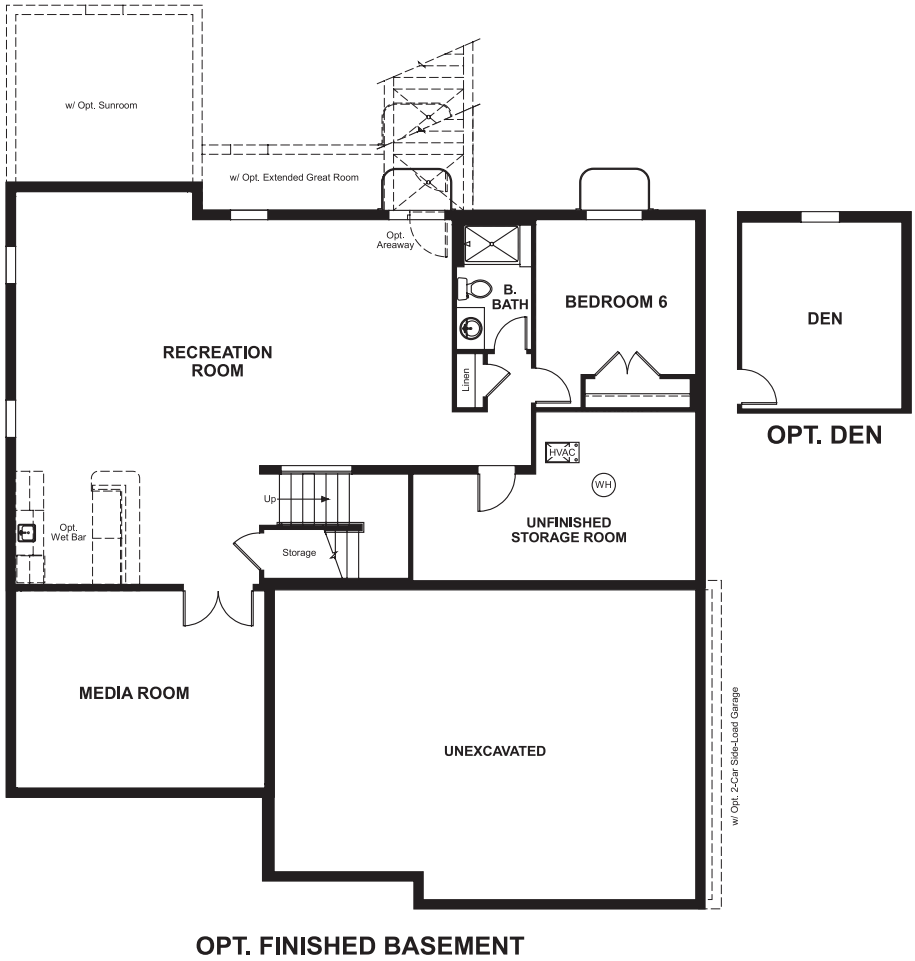
Shelton Woods
DONOVAN

Approx. square feet: 3,900
Stories: 2
Bedrooms: 4 - 6

Garage: 3-car
Plan Number: V639

Shelton Woods
DONOVAN

Floor Plan
Basement



Elevation A

Available elevations:



Elevation A



Elevation B



Elevation C



Elevation D



Elevation E



Elevation F



Elevation G



Elevation H



Elevation J

Approx. square feet: 3,900
Stories: 2
Bedrooms: 4 - 6
Garage: 3-car
Plan Number: V639

A dramatic two-story entry welcomes guests to the distinctive Donovan plan. The main floor also includes a study, an expansive great room and a formal dining room with a butler's pantry leading to a well-appointed kitchen with optional gourmet features. Upstairs, relax in the luxurious master suite with optional deluxe bath. Personalize this plan with a wraparound porch, sunroom and finished basement. Finished recreation room is included!

COMMUNITY LOCATION

Courthouse Road and Shelton Shop Road
Stafford, VA 22554
888-891-7349

HOME GALLERY

11393 Government Center Parkway
Fairfax, VA 22030
888-891-7349



COMMUNITY LOCATION

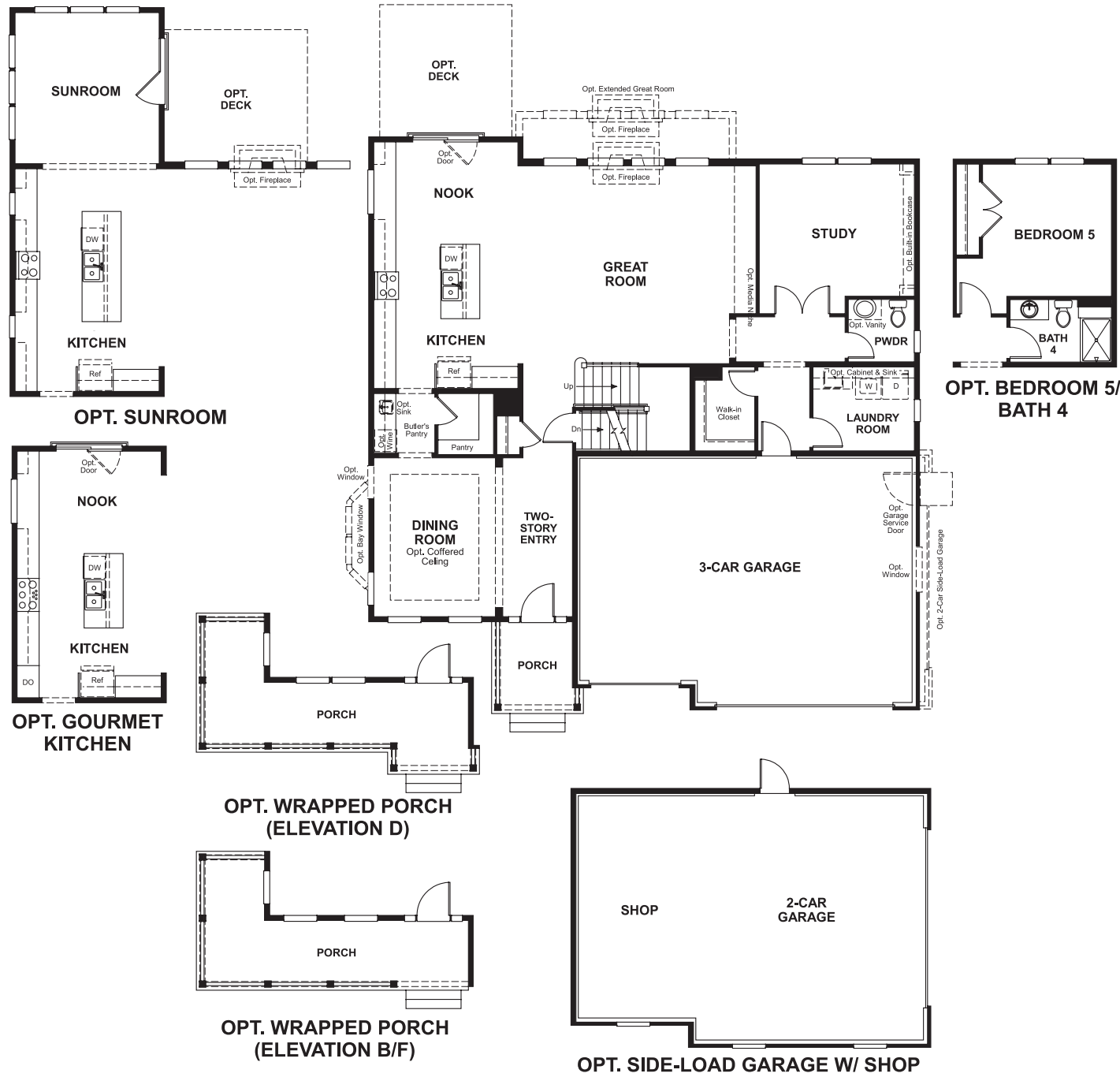
Courthouse Road and Shelton Shop Road
Stafford, VA 22554
888-891-7349

HOME GALLERY

11393 Government Center Parkway
Fairfax, VA 22030
888-891-7349



Floor Plan
Main Floor



Floor Plan
Second Floor

