

Summer Hill
ELAINE



Elevation A

Approx. square feet: 1,450
Stories: 2
Bedrooms: 3
Garage: 2-car
Plan Number: LI48

The Elaine plan offers an open main floor that includes spaces for a great room. Upstairs, you'll find three inviting bedrooms, including a master suite with walk-in closet and private bath. Options include a covered patio and deluxe master bath.

Available elevations:



Elevation A



Elevation B



Elevation C

COMMUNITY LOCATION

Cactus Avenue and Mann Street
 Las Vegas, NV 89141
 702-638-4440

HOME GALLERY

7770 South Dean Martin Drive, Suite 308
 Las Vegas, NV 89139
 702-617-8400



COMMUNITY LOCATION

Cactus Avenue and Mann Street
 Las Vegas, NV 89141
 702-638-4440

HOME GALLERY

7770 South Dean Martin Drive, Suite 308
 Las Vegas, NV 89139
 702-617-8400

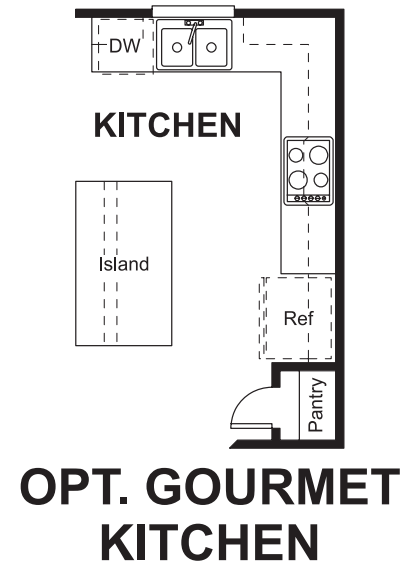
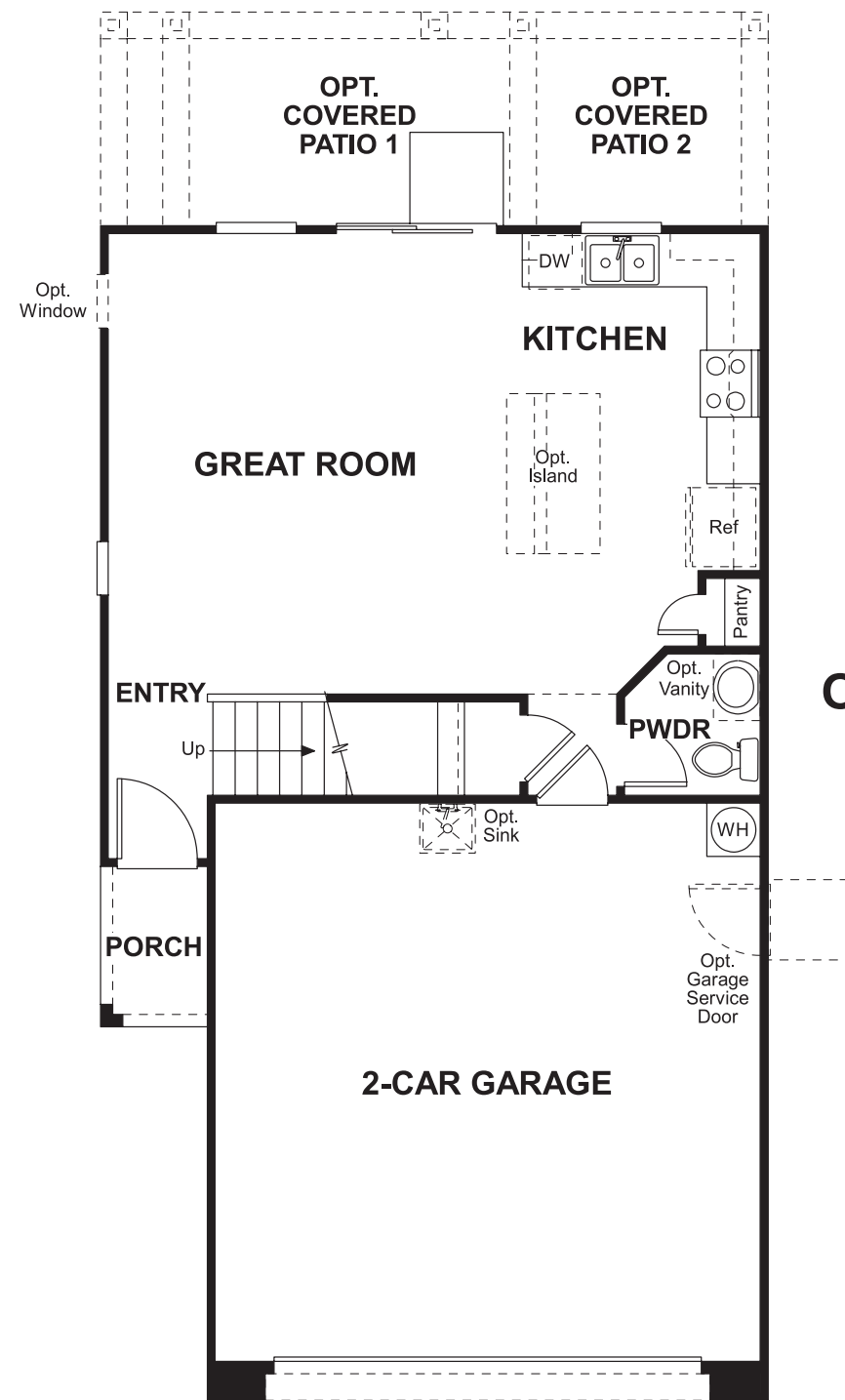


Summer Hill
ELAINE

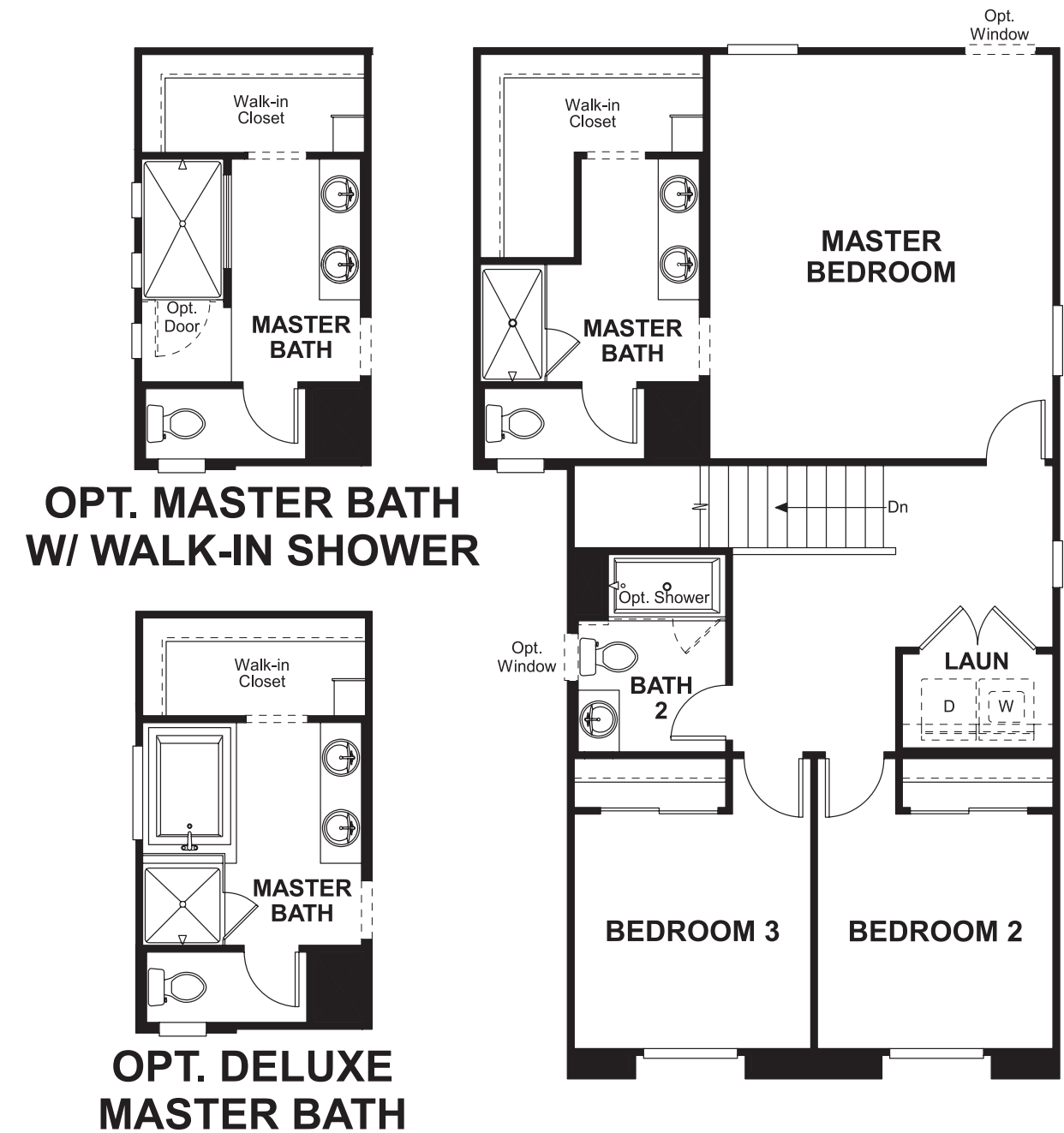
Approx. square feet: 1,450
Stories: 2
Bedrooms: 3

Garage: 2-car
Plan Number: LI48

Floor Plan
Main Floor



Floor Plan
Second Floor



OPT. MASTER BATH W/ WALK-IN SHOWER

