

Summer Hill

ELIZABETH



Elevation A

Available elevations:



Elevation A



Elevation B



Elevation C

**Approx. square feet:** 1,900  
**Stories:** 2  
**Bedrooms:** 3 - 4  
**Garage:** 2-car  
**Plan Number:** L19E

A distinctive side entrance welcomes you to this Elizabeth home. The spacious great room and dining room offer the perfect layout for entertaining. The upstairs loft can be extended. The laundry room is also on the second floor, for ultimate convenience.

**COMMUNITY LOCATION**  
Cactus Avenue and Mann Street  
Las Vegas, NV 89141  
702-638-4440

**HOME GALLERY**  
7770 South Dean Martin Drive, Suite 308  
Las Vegas, NV 89139  
702-617-8400



**COMMUNITY LOCATION**  
Cactus Avenue and Mann Street  
Las Vegas, NV 89141  
702-638-4440

**HOME GALLERY**  
7770 South Dean Martin Drive, Suite 308  
Las Vegas, NV 89139  
702-617-8400

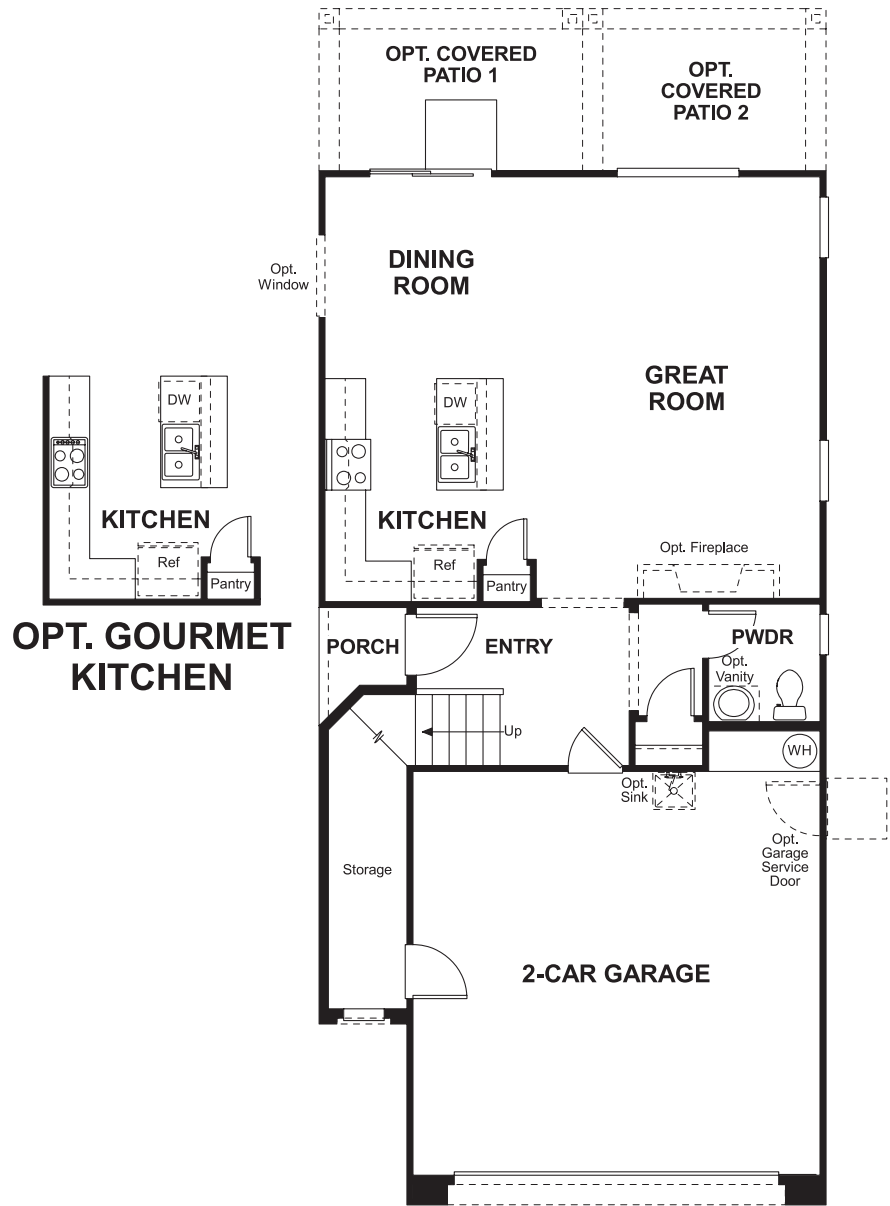


Summer Hill  
**ELIZABETH**

**Approx. square feet:** 1,900  
**Stories:** 2  
**Bedrooms:** 3 - 4

**Garage:** 2-car  
**Plan Number:** LI9E

**Floor Plan**  
Main Floor



**Floor Plan**  
Second Floor

