

FITZGERALD



Elevation A

Approx. square feet: 2,274
Stories: 1 with Bonus
Bedrooms: 3
Garage: 2- to 3-car
Plan Number: F233

This inspired home's main-floor great room opens to the kitchen, which offers a pantry and breakfast bar, plus options for gourmet features. A formal dining room and optional covered patio provide additional space to entertain before retiring to the comfortable bedrooms. Upstairs, you'll find a bonus room with full bath.

Available elevations:



Elevation A



Elevation B



Elevation C
Shown with optional stone



Elevation D



Elevation E



Elevation F

HOME GALLERY

762 South Northlake Boulevard, #1004
 Altamonte Springs, FL 32701
 321-418-3095



HOME GALLERY

762 South Northlake Boulevard, #1004
 Altamonte Springs, FL 32701
 321-418-3095

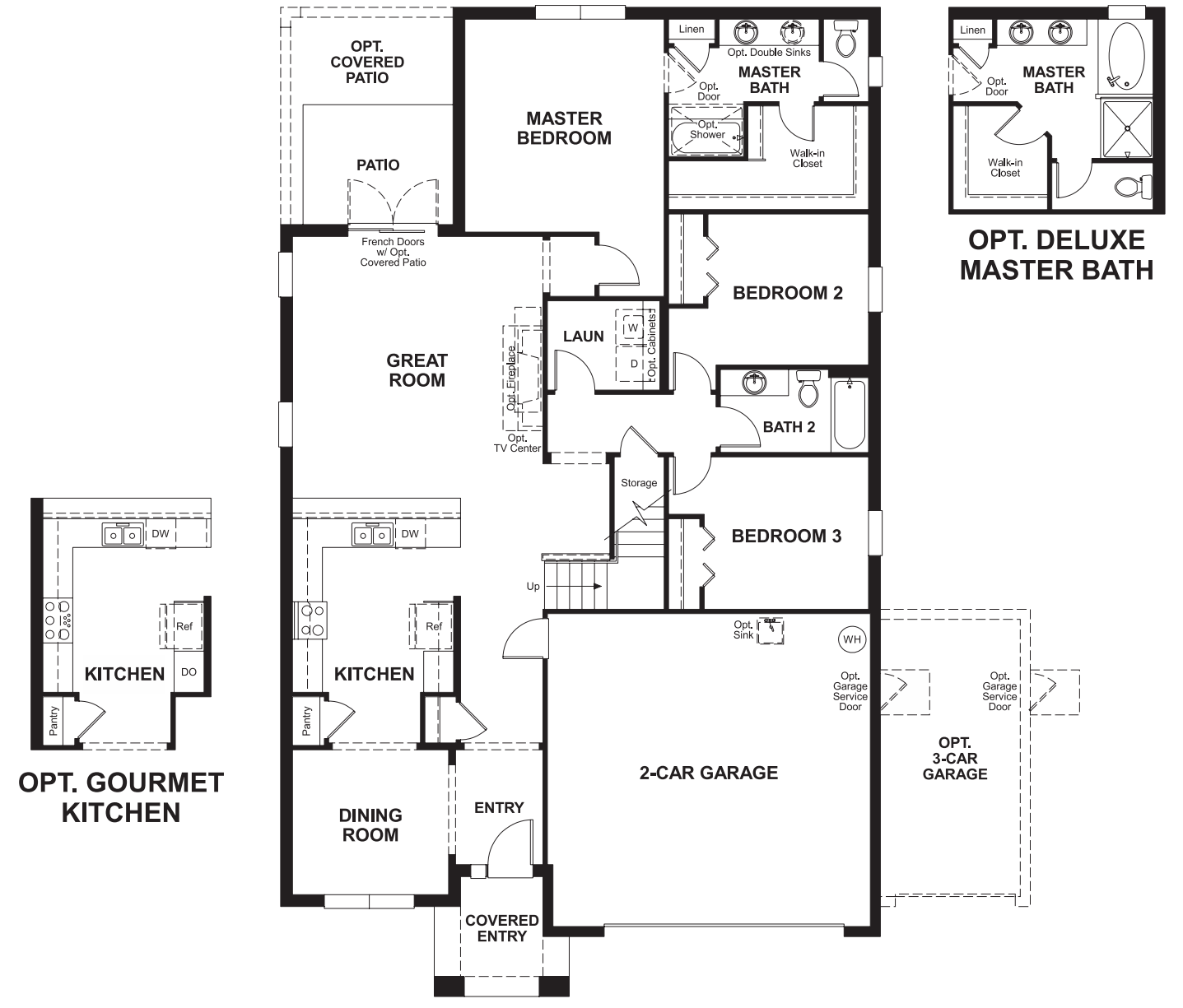


FITZGERALD

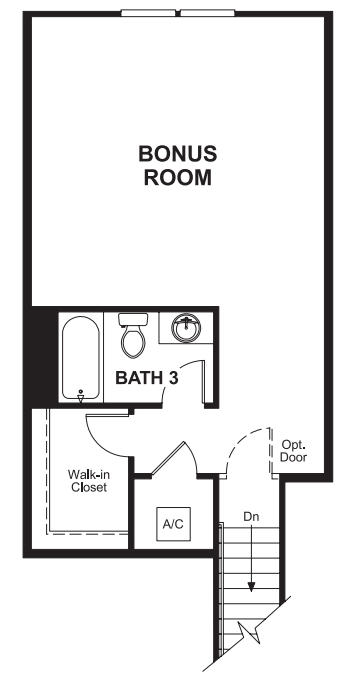
Approx. square feet: 2,274
Stories: 1 with Bonus
Bedrooms: 3

Garage: 2- to 3-car
Plan Number: F233

Floor Plan
Main Floor



Floor Plan
Second Floor



THIS PLAN'S PROJECTED HERS® INDEX = 64*
Projected Rating Based on Plans – Field Confirmation Required

How does this floor plan rate?
Take a look: **100** = Standard new home* **130** = Typical resale home**
The lower the number, the better! Refer to the RESNET® HERS index brochure or go to www.RESNET.us for details.

What's a HERS® Index? HERS stands for Home Energy Rating System, a system created by RESNET® to measure home energy efficiency.[^]
A Projected HERS index or rating is a computer simulation performed prior to construction by a third-party HERS rater using RESNET-accredited rating software, rated feature and specification data derived from home plans, features and specifications, and other data selected or assumed by the rater. The projected HERS index is approximate and is subject to change without notice. Actual results will vary.

*This information is presented for education purposes only. The HERS index for a confirmed rating will be determined by a third-party HERS rater based on data gathered from on-site observations and, if required, testing of rated features for a home as featured, optioned, located, oriented and/or built.
+Standard new home is based on the RESNET® Reference Home definition with a HERS® index of 100 (based on the 2006 International Energy Conservation Code).
++Typical resale home is based on the U.S. Department of Energy definition with a HERS® index of 130.

[^]RESNET® has developed the HERS® index to indicate the comparative efficiencies of homes. It is no guarantee that energy efficiencies will be achieved.