

Skyline Ridge
FRANKLIN



Elevation A

Approx. square feet: 2,400

Stories: 2

Bedrooms: 4 - 5

Garage: 2-car

Plan Number: L241

The Franklin plan welcomes guests with a covered porch and two-story entry. A formal dining room, spacious great room, nook and open kitchen provide ample space for entertaining. Upstairs, you'll find a tech center, three inviting bedrooms with walk-in closets and a master suite with a private bath. Options include a study and covered patio.

Available elevations:



Elevation A



Elevation B



Elevation C

COMMUNITY LOCATION

Grand Canyon Drive and Ford Avenue
Las Vegas, NV 89178
702-638-4440

HOME GALLERY

7770 South Dean Martin Drive, Suite 308
Las Vegas, NV 89139
702-617-8400



COMMUNITY LOCATION

Grand Canyon Drive and Ford Avenue
Las Vegas, NV 89178
702-638-4440

HOME GALLERY

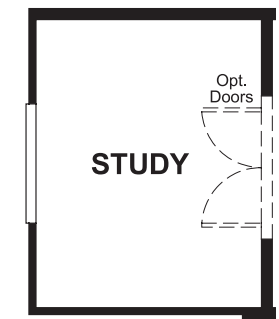
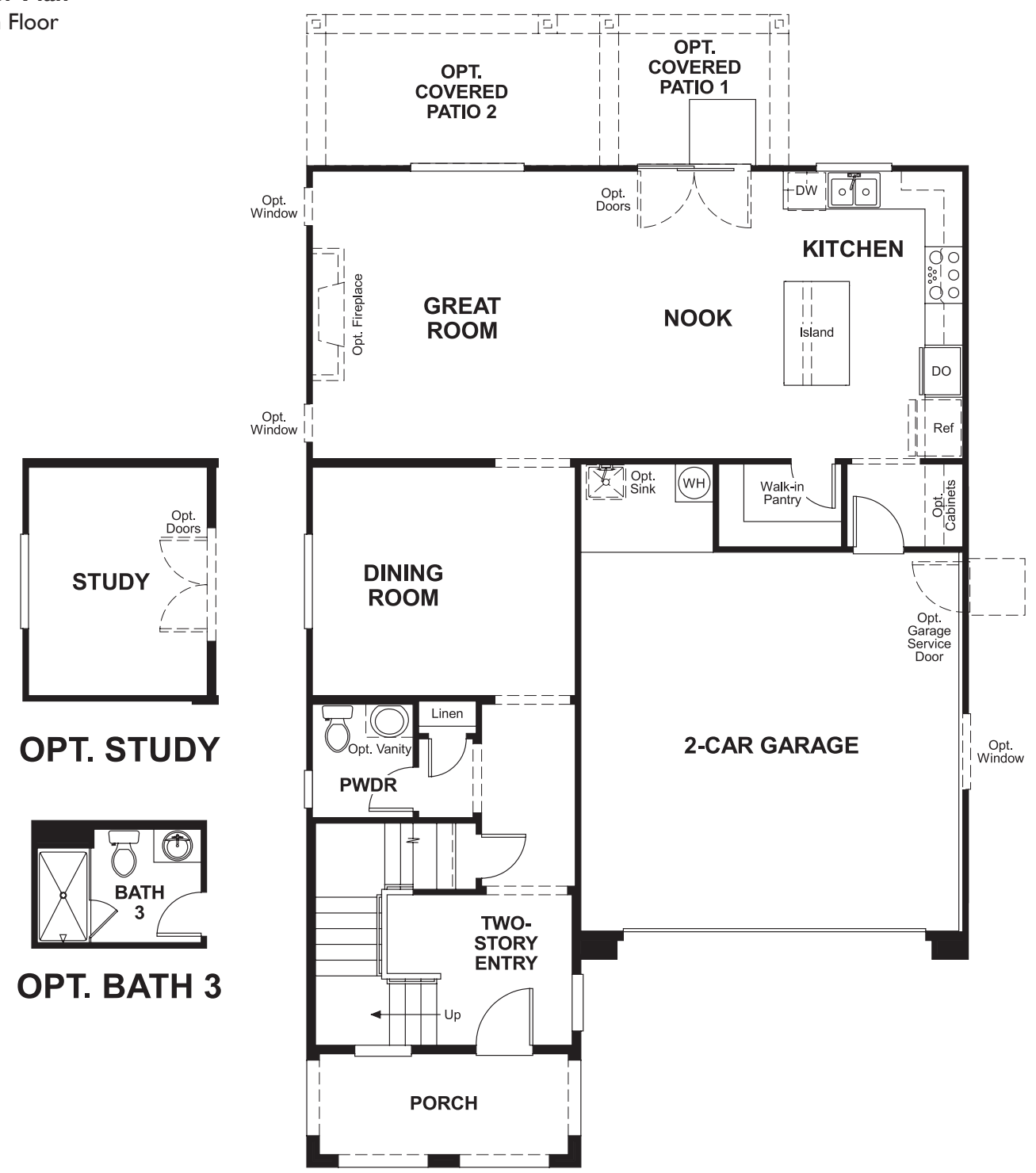
7770 South Dean Martin Drive, Suite 308
Las Vegas, NV 89139
702-617-8400



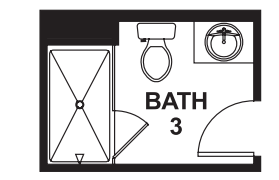
Skyline Ridge
FRANKLIN

Approx. square feet: 2,400
Stories: 2
Bedrooms: 4 - 5
Garage: 2-car
Plan Number: L241

Floor Plan
Main Floor

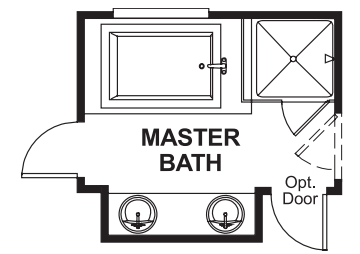
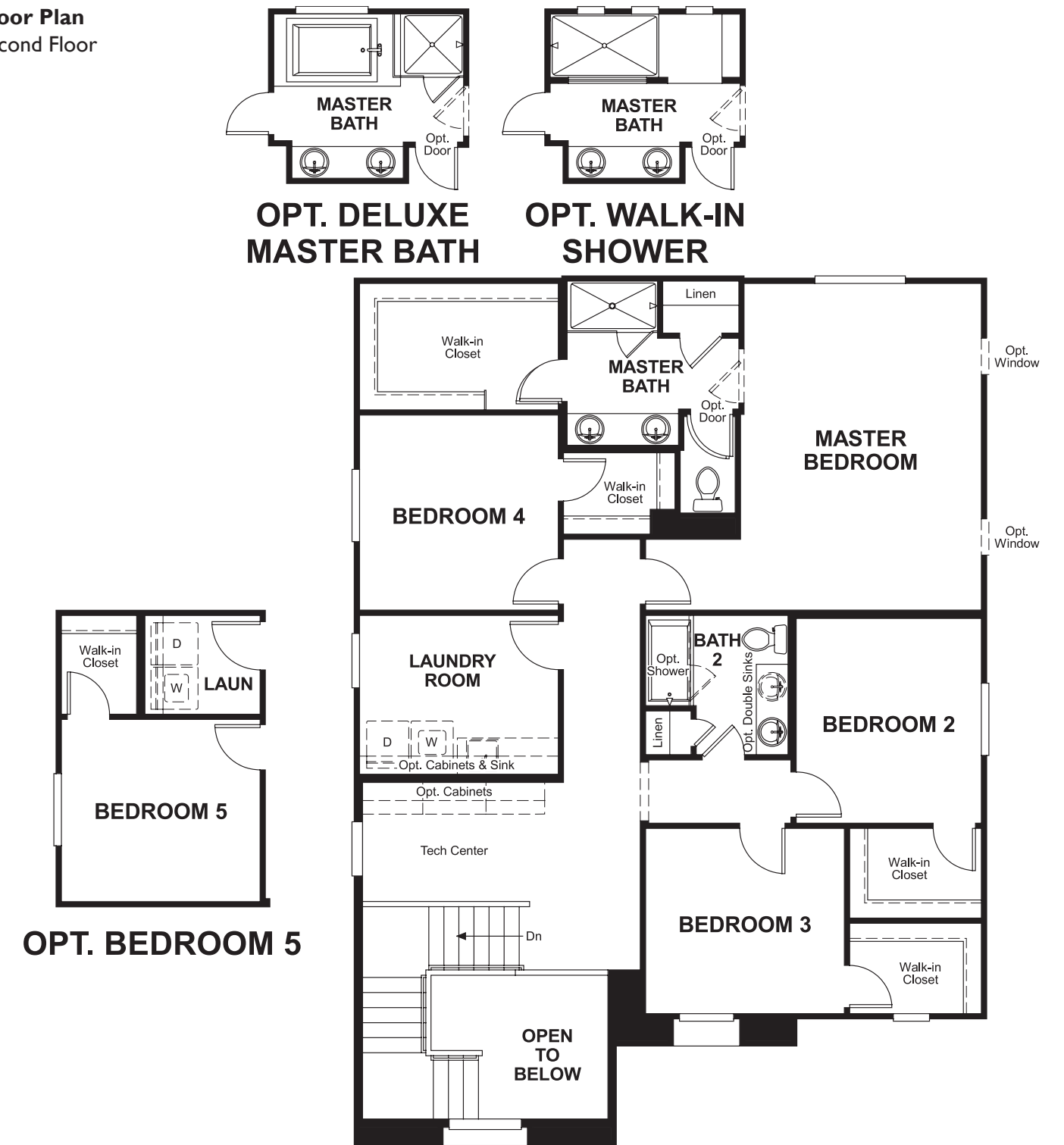


OPT. STUDY

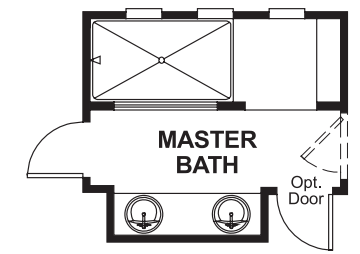


OPT. BATH 3

Floor Plan
Second Floor



OPT. DELUXE MASTER BATH



OPT. WALK-IN SHOWER



OPT. BEDROOM 5