

San Mateo  
**FREMONT**



**Elevation A**

**Approx. square feet:** 2,550  
**Stories:** 2  
**Bedrooms:** 4 - 5  
**Garage:** 2-car  
**Plan Number:** L269

The Fremont plan is a must-see for entertaining. The kitchen serves as an anchor between the great room and living room, offering an immense walk-in pantry and an island with double sinks. The upstairs boasts a versatile loft area and four inviting bedrooms, including the master suite. Options include a dining room with butler's pantry.

**Available elevations:**



**Elevation A**



**Elevation B**



**Elevation C**

**COMMUNITY LOCATION**

Russell Road and Hualapai Road  
 Las Vegas, NV 89148  
 702-638-4440

**HOME GALLERY**

7770 South Dean Martin Drive, Suite 308  
 Las Vegas, NV 89139  
 702-617-8400



**COMMUNITY LOCATION**

Russell Road and Hualapai Road  
 Las Vegas, NV 89148  
 702-638-4440

**HOME GALLERY**

7770 South Dean Martin Drive, Suite 308  
 Las Vegas, NV 89139  
 702-617-8400

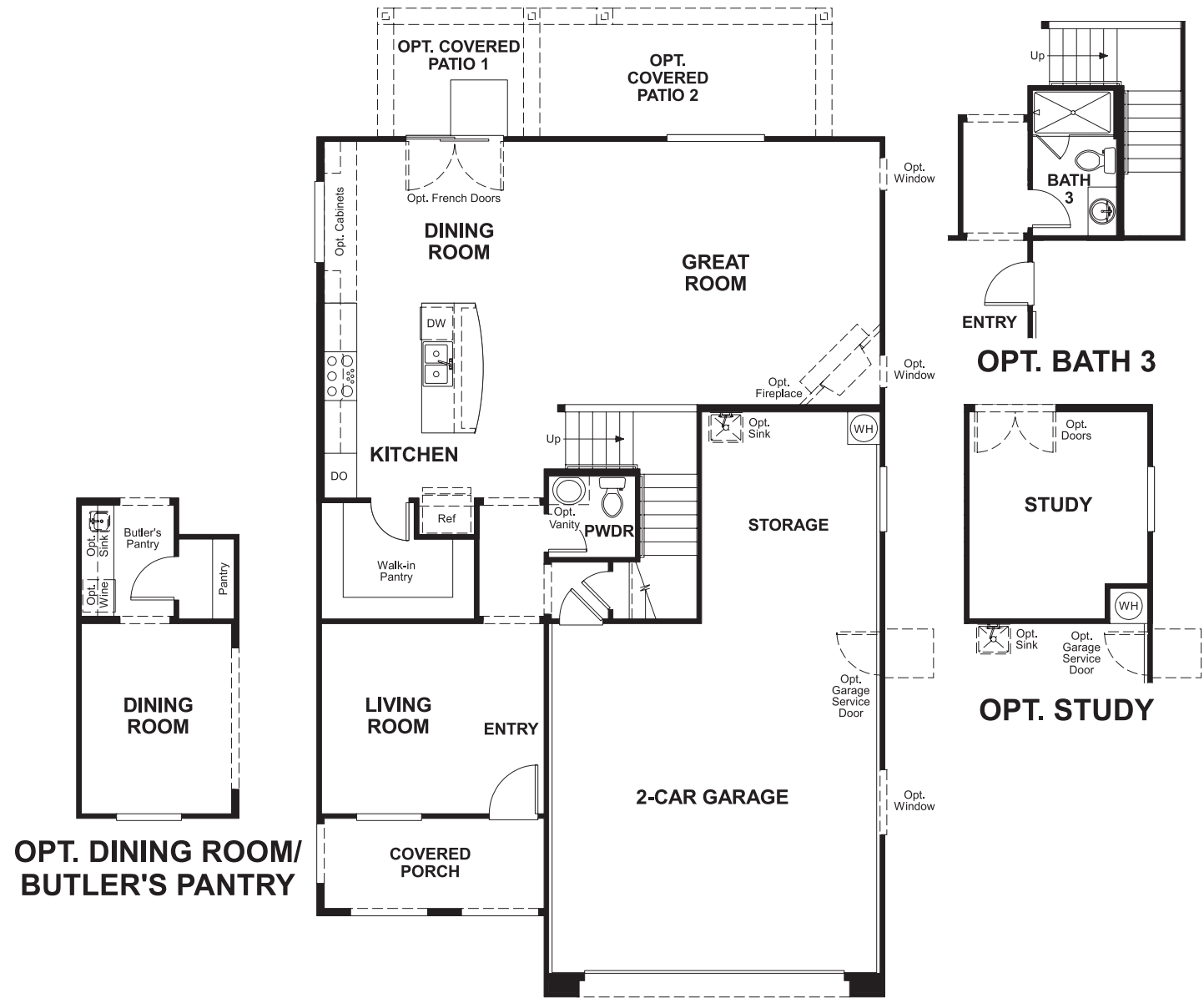


San Mateo  
**FREMONT**

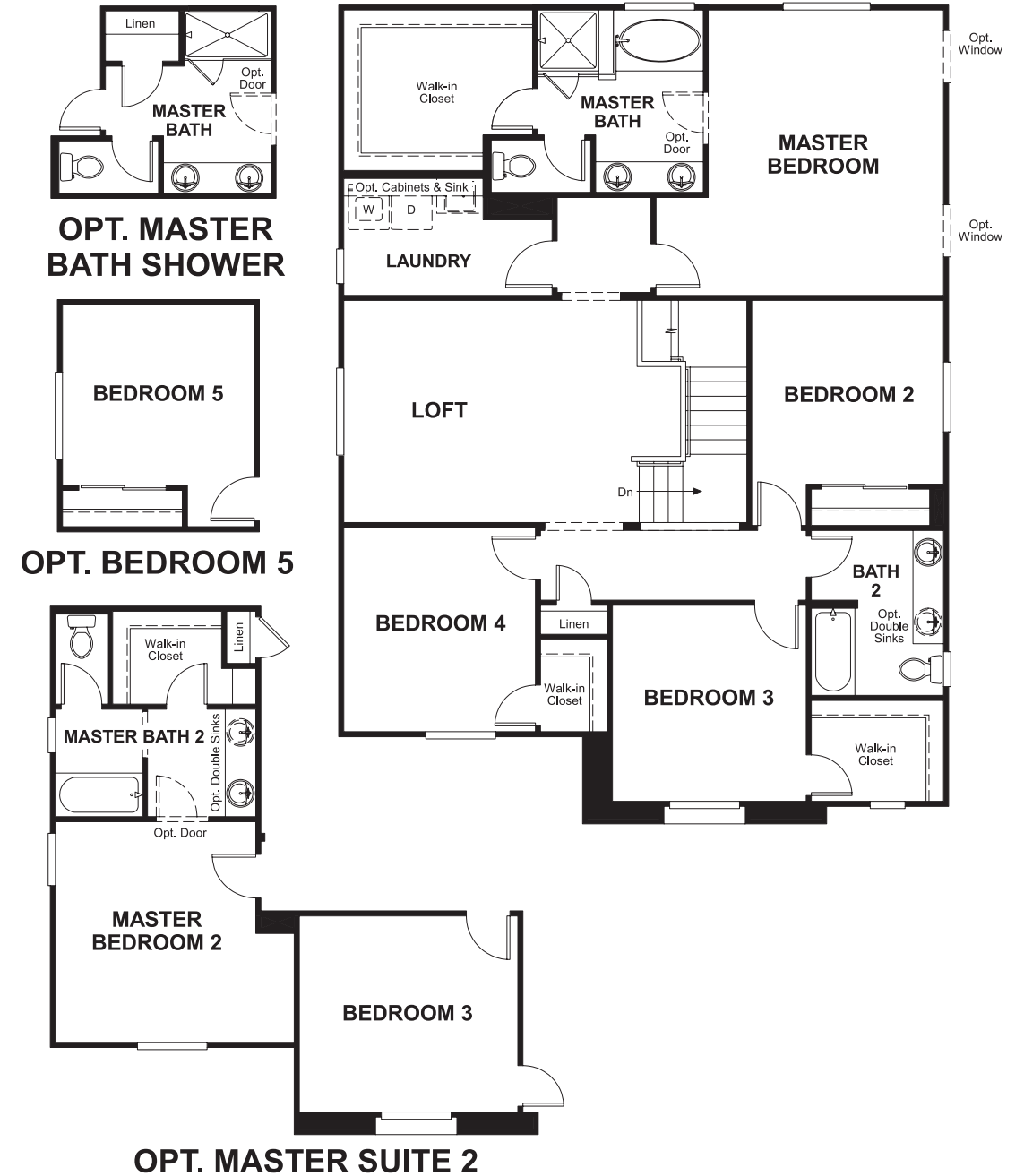
Approx. square feet: 2,550  
Stories: 2  
Bedrooms: 4 - 5

Garage: 2-car  
Plan Number: L269

**Floor Plan**  
Main Floor



**Floor Plan**  
Upper Floor



**THIS PLAN'S PROJECTED HERS® INDEX = 64\***  
Projected Rating Based on Plans – Field Confirmation Required

**How does this floor plan rate?**  
Take a look: **100** = Standard new home\* **130** = Typical resale home\*\*  
The lower the number, the better! Refer to the RESNET® HERS index brochure or go to [www.RESNET.us](http://www.RESNET.us) for details.

**What's a HERS® Index?** HERS stands for Home Energy Rating System, a system created by RESNET® to measure home energy efficiency.<sup>^</sup>  
A Projected HERS index or rating is a computer simulation performed prior to construction by a third-party HERS rater using RESNET-accredited rating software, rated feature and specification data derived from home plans, features and specifications, and other data selected or assumed by the rater. The projected HERS index is approximate and is subject to change without notice. Actual results will vary.

\*This information is presented for education purposes only. The HERS index for a confirmed rating will be determined by a third-party HERS rater based on data gathered from on-site observations and, if required, testing of rated features for a home as featured, optioned, located, oriented and/or built.  
+Standard new home is based on the RESNET® Reference Home definition with a HERS® index of 100 (based on the 2006 International Energy Conservation Code).  
\*\*Typical resale home is based on the U.S. Department of Energy definition with a HERS® index of 130.

^RESNET® has developed the HERS® index to indicate the comparative efficiencies of homes. It is no guarantee that energy efficiencies will be achieved.