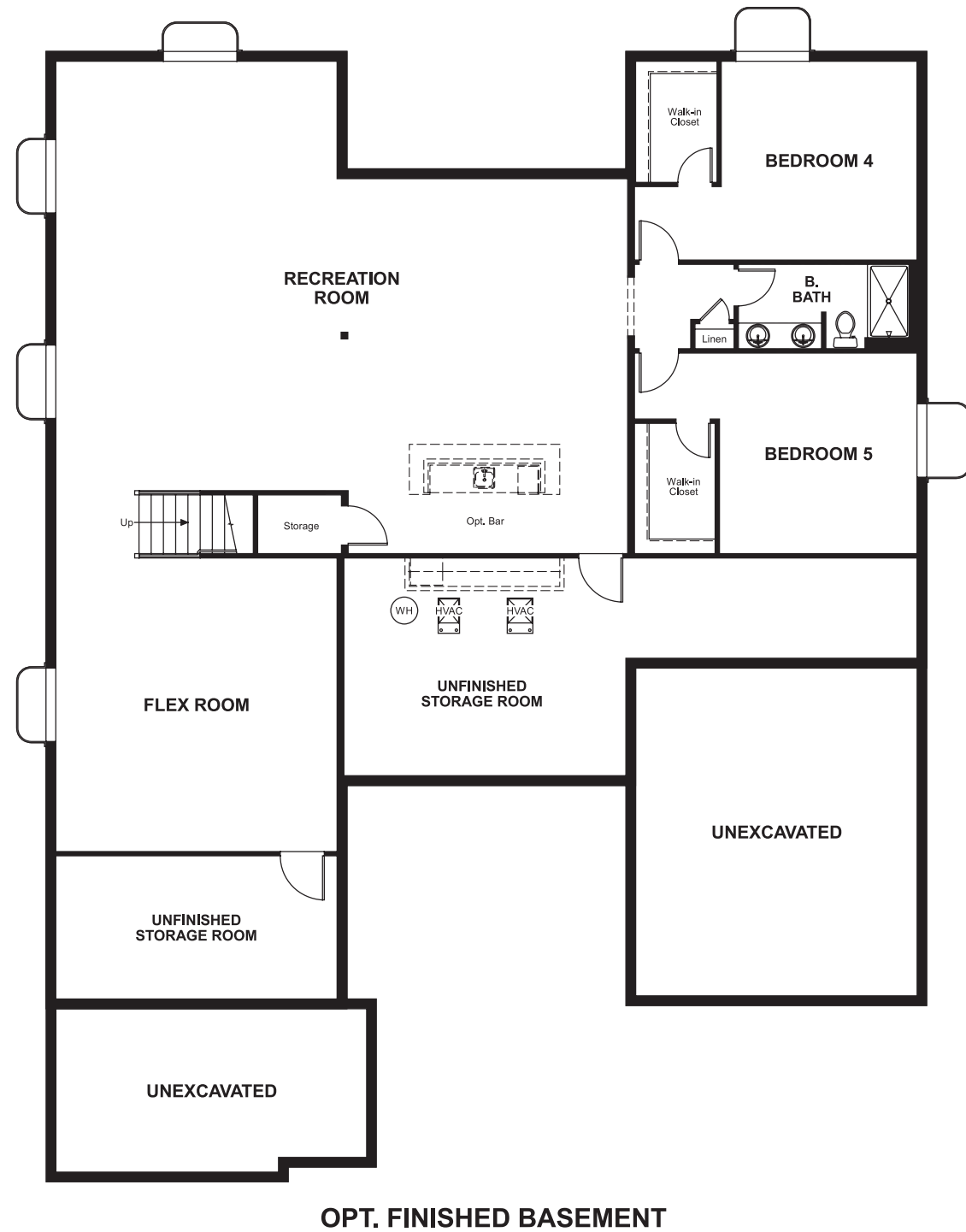


Oak Ridge at Crystal Valley
HANFORD

Approx. square feet: 2,950
Stories: 1
Bedrooms: 3 - 4

Garage: 3-car
Plan Number: D29H

Floor Plan
Basement



OPT. FINISHED BASEMENT

COMMUNITY LOCATION
2449 Garganey Drive
Castle Rock, CO 80104
303-660-0950

HOME GALLERY
8000 East Belleview Avenue, Suite C-12
Greenwood Village, CO 80111
888-402-4663



Oak Ridge at Crystal Valley
HANFORD

Approx. square feet: 2,950
Stories: 1
Bedrooms: 3 - 4
Garage: 3-car
Plan Number: D29H

The ranch-style Hanford offers attractive curb appeal with front- and side-entry garages and a wide porch. Inside, you'll find a formal dining room, a spacious great room, a nook, a tech center and an open kitchen with a roomy walk-in pantry and an immense central island. The master suite offers a large walk-in closet and a private bath.



Elevation A

Available elevations:



Elevation A



Elevation B



Elevation C

COMMUNITY LOCATION
2449 Garganey Drive
Castle Rock, CO 80104
303-660-0950

HOME GALLERY
8000 East Belleview Avenue, Suite C-12
Greenwood Village, CO 80111
888-402-4663

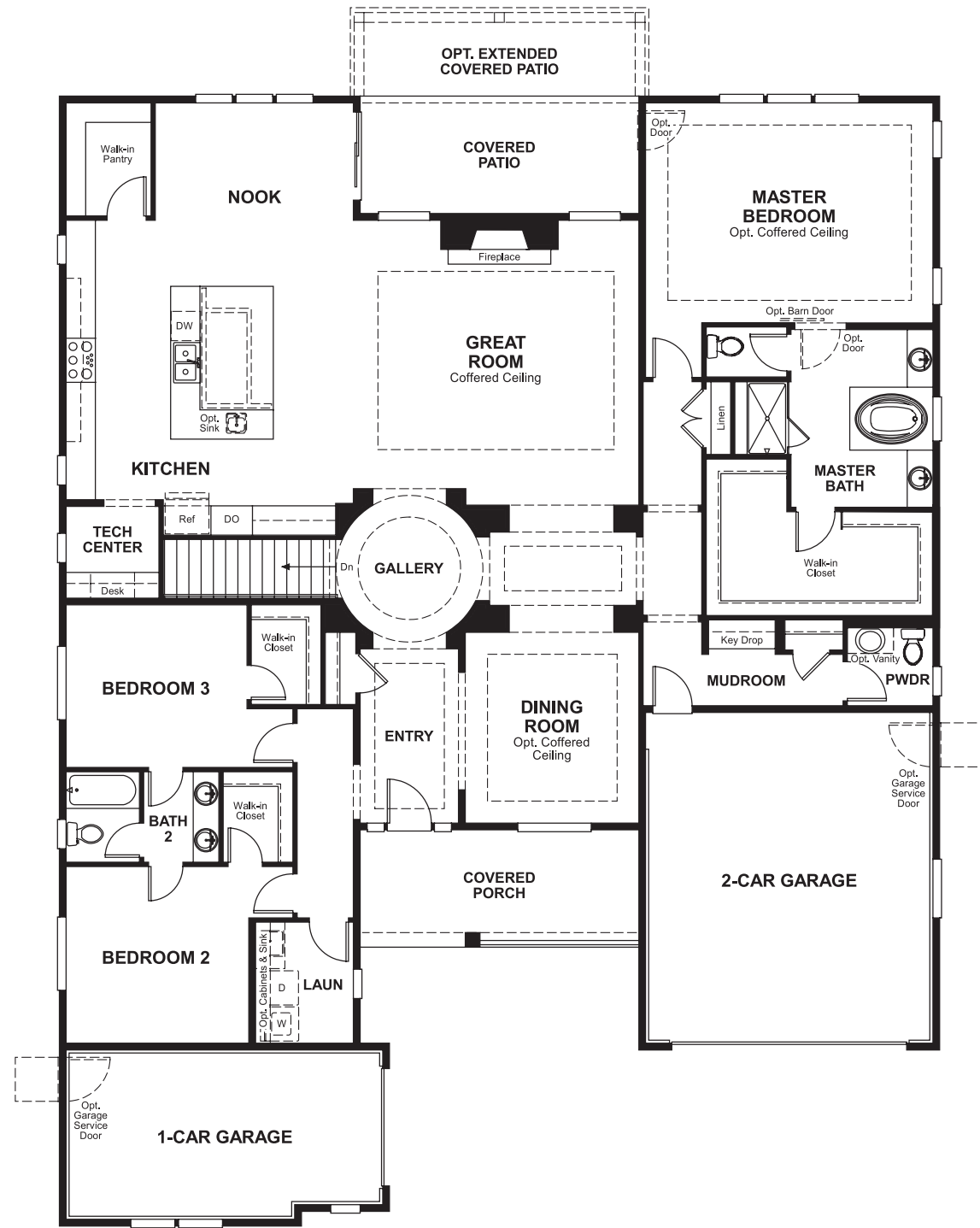


Oak Ridge at Crystal Valley
HANFORD

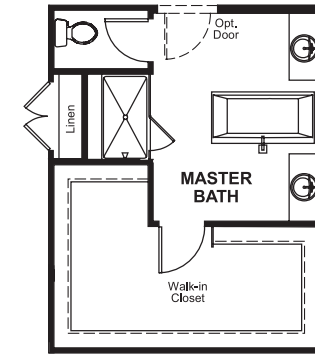
Approx. square feet: 2,950
Stories: 1
Bedrooms: 3 - 4

Garage: 3-car
Plan Number: D29H

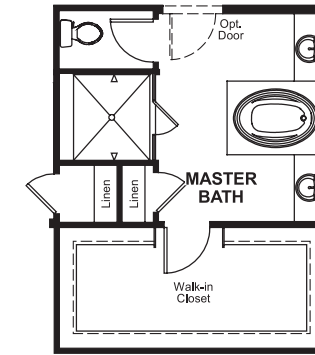
Floor Plan
Main Floor



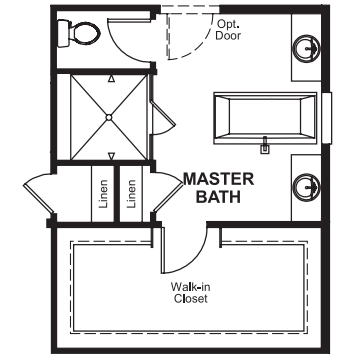
Floor Plan
Main Floor Options



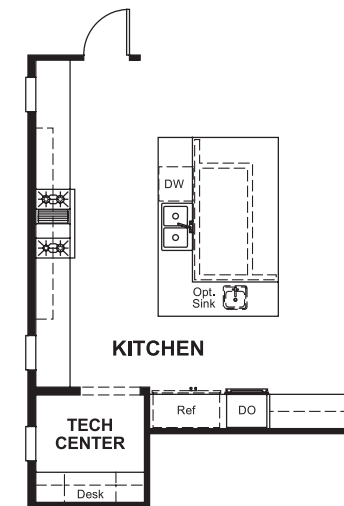
OPT. FREE-STANDING TUB



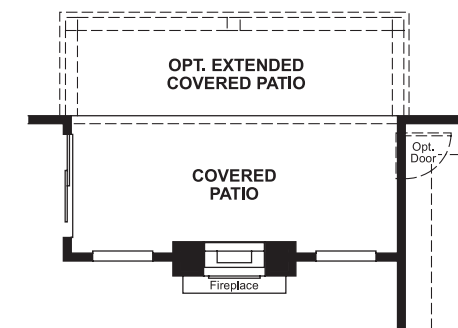
OPT. DELUXE MASTER BATH 2



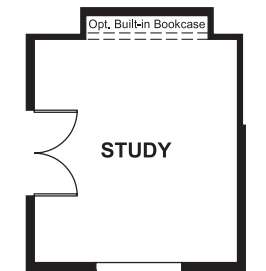
OPT. DELUXE MASTER BATH 2 W/ FREE-STANDING TUB



OPT. PROFESSIONAL KITCHEN



OPT. 2-SIDED FIREPLACE



OPT. STUDY

THIS PLAN'S PROJECTED HERS® INDEX = 57*
Projected Rating Based on Plans – Field Confirmation Required

How does this floor plan rate?
Take a look: 100 = Standard new home* 130 = Typical resale home**
The lower the number, the better! Refer to the RESNET® HERS index brochure or go to www.RESNET.us for details.

What's a HERS® Index? HERS stands for Home Energy Rating System, a system created by RESNET® to measure home energy efficiency.[^]
A Projected HERS index or rating is a computer simulation performed prior to construction by a third-party HERS rater using RESNET-accredited rating software, rated feature and specification data derived from home plans, features and specifications, and other data selected or assumed by the rater. The projected HERS index is approximate and is subject to change without notice. Actual results will vary.

*This information is presented for education purposes only. The HERS index for a confirmed rating will be determined by a third-party HERS rater based on data gathered from on-site observations and, if required, testing of rated features for a home as featured, optioned, located, oriented and/or built.
+Standard new home is based on the RESNET® Reference Home definition with a HERS® index of 100 (based on the 2006 International Energy Conservation Code).
++Typical resale home is based on the U.S. Department of Energy definition with a HERS® index of 130.

[^]RESNET® has developed the HERS® index to indicate the comparative efficiencies of homes. It is no guarantee that energy efficiencies will be achieved.