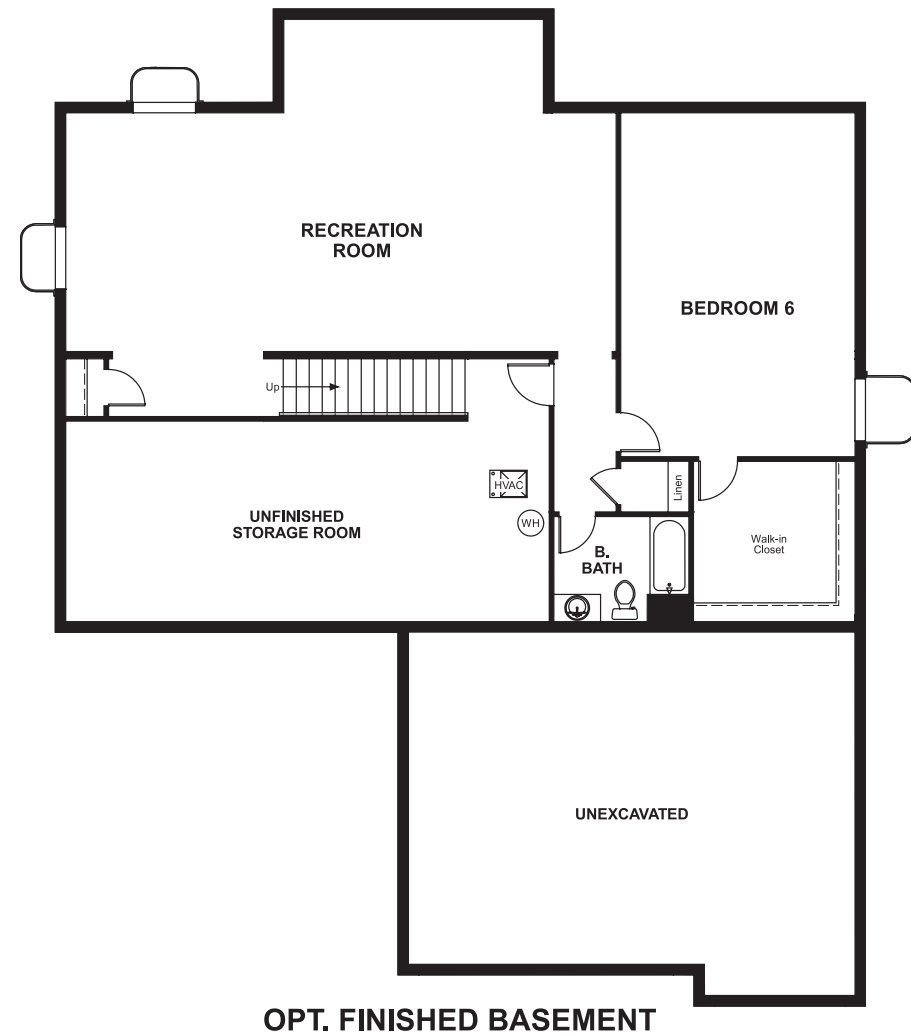


The Summit at Tallyn's Reach
HARPER

Approx. square feet: 3,400
Stories: 2
Bedrooms: 4 - 6

Garage: 3-car
Plan Number: D343

Floor Plan
Basement



The Summit at Tallyn's Reach
HARPER

Approx. square feet: 3,400
Stories: 2
Bedrooms: 4 - 6
Garage: 3-car
Plan Number: D343

The unique floor plan of the Harper features a generous family room that flows into an oversized kitchen with nook. The beautiful two-story entry with elegant curved staircase opens into the living room and adjacent dining room. An optional finished basement with recreation room and additional bedroom is also available.



Elevation A

Available elevations:



Elevation A



Elevation D

COMMUNITY LOCATION
6746 South Biloxi Court
Aurora, CO 80016
TBD

HOME GALLERY
8000 East Bellview Avenue, Suite B-90
Greenwood Village, CO 80111
888-402-4663



COMMUNITY LOCATION
6746 South Biloxi Court
Aurora, CO 80016
TBD

HOME GALLERY
8000 East Bellview Avenue, Suite B-90
Greenwood Village, CO 80111
888-402-4663

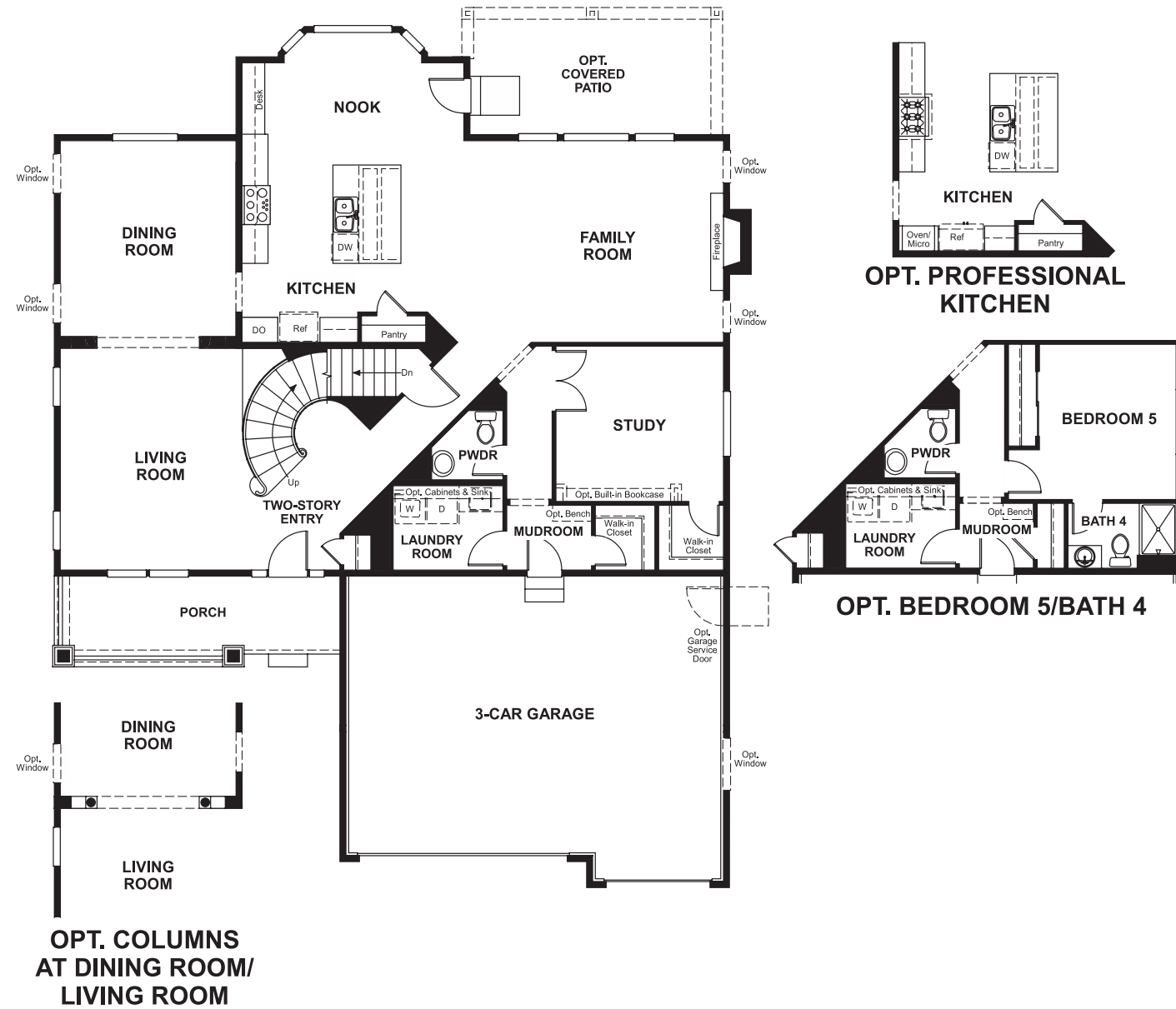


The Summit at Tallyn's Reach
HARPER

Approx. square feet: 3,400
Stories: 2
Bedrooms: 4 - 6

Garage: 3-car
Plan Number: D343

Floor Plan
First Floor



Floor Plan
Second Floor

