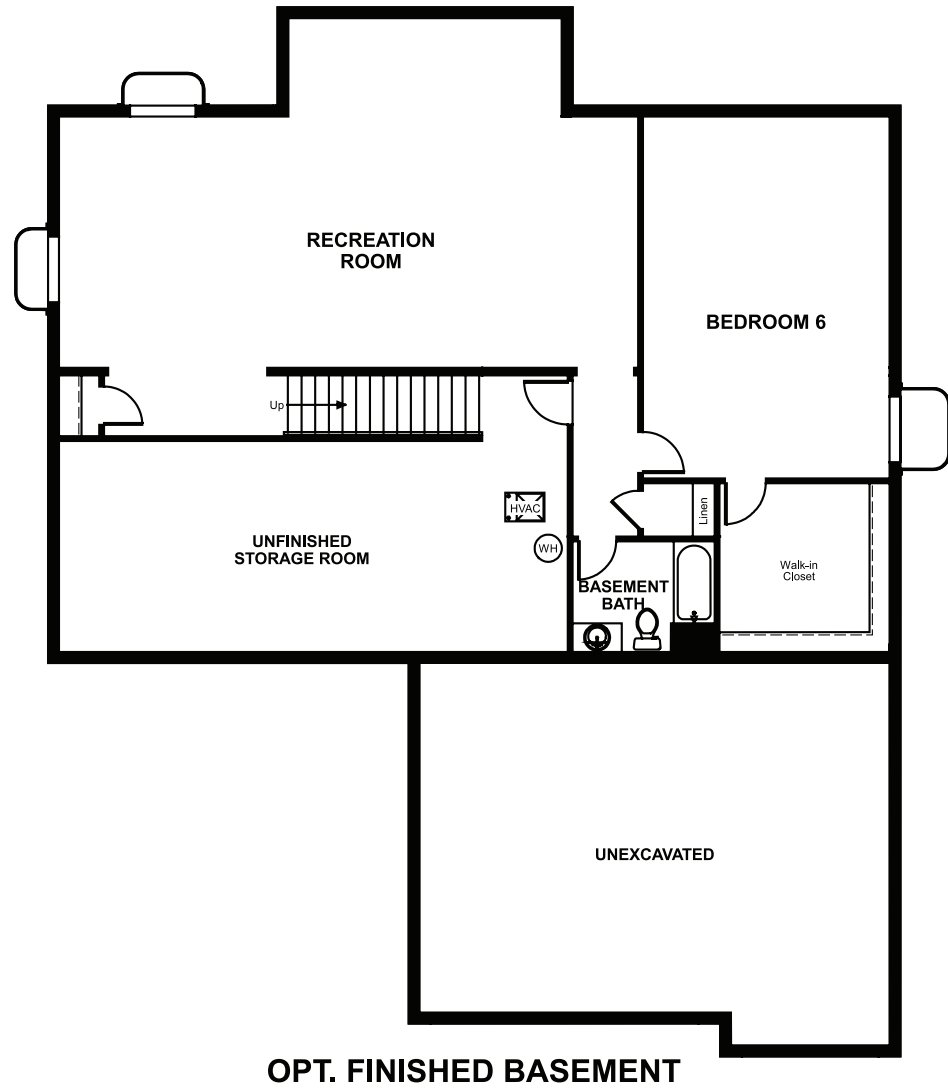


Wheatlands
HARPER

Approx. square feet: 3,400
Stories: 2
Bedrooms: 4 - 6

Garage: 2- to 3-car
Plan Number: D343

Floor Plan
Basement



OPT. FINISHED BASEMENT

COMMUNITY LOCATION
6548 South Kewaunee Way
Aurora, CO 80016
303-690-9665

HOME GALLERY
800 East Belleview Avenue Unit B-90
Greenwood Village, CO 80111
303-850-5750



Wheatlands
HARPER

Approx. square feet: 3,400
Stories: 2
Bedrooms: 4 - 6
Garage: 2- to 3-car
Plan Number: D343

The Harper features a generous family room that opens onto a spacious kitchen with nook. The beautiful two-story entry with elegant curved staircase leads to the living room and adjacent dining room. An optional finished basement with recreation room and additional bedroom is also available.



Elevation A

Available elevations:



Elevation A



Elevation B



Elevation C



Elevation D

COMMUNITY LOCATION
6548 South Kewaunee Way
Aurora, CO 80016
303-690-9665

HOME GALLERY
800 East Belleview Avenue Unit B-90
Greenwood Village, CO 80111
303-850-5750

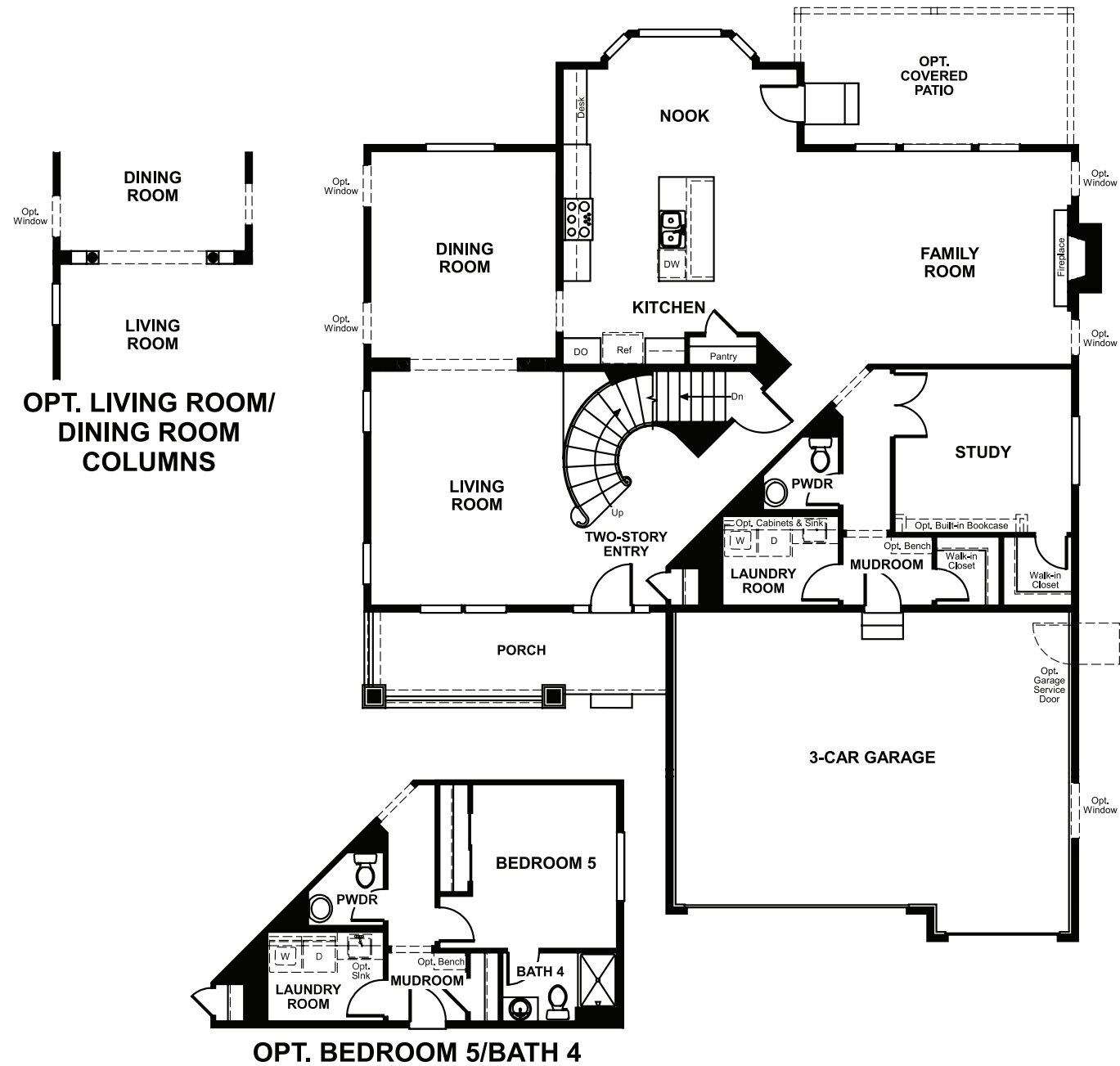


Wheatlands
HARPER

Approx. square feet: 3,400
Stories: 2
Bedrooms: 4 - 6

Garage: 2- to 3-car
Plan Number: D343

Floor Plan
First Floor



Floor Plan
Second Floor

