

Aldie Estates
HATHAWAY

Approx. square feet: 4,286
Stories: 2
Bedrooms: 4 - 6

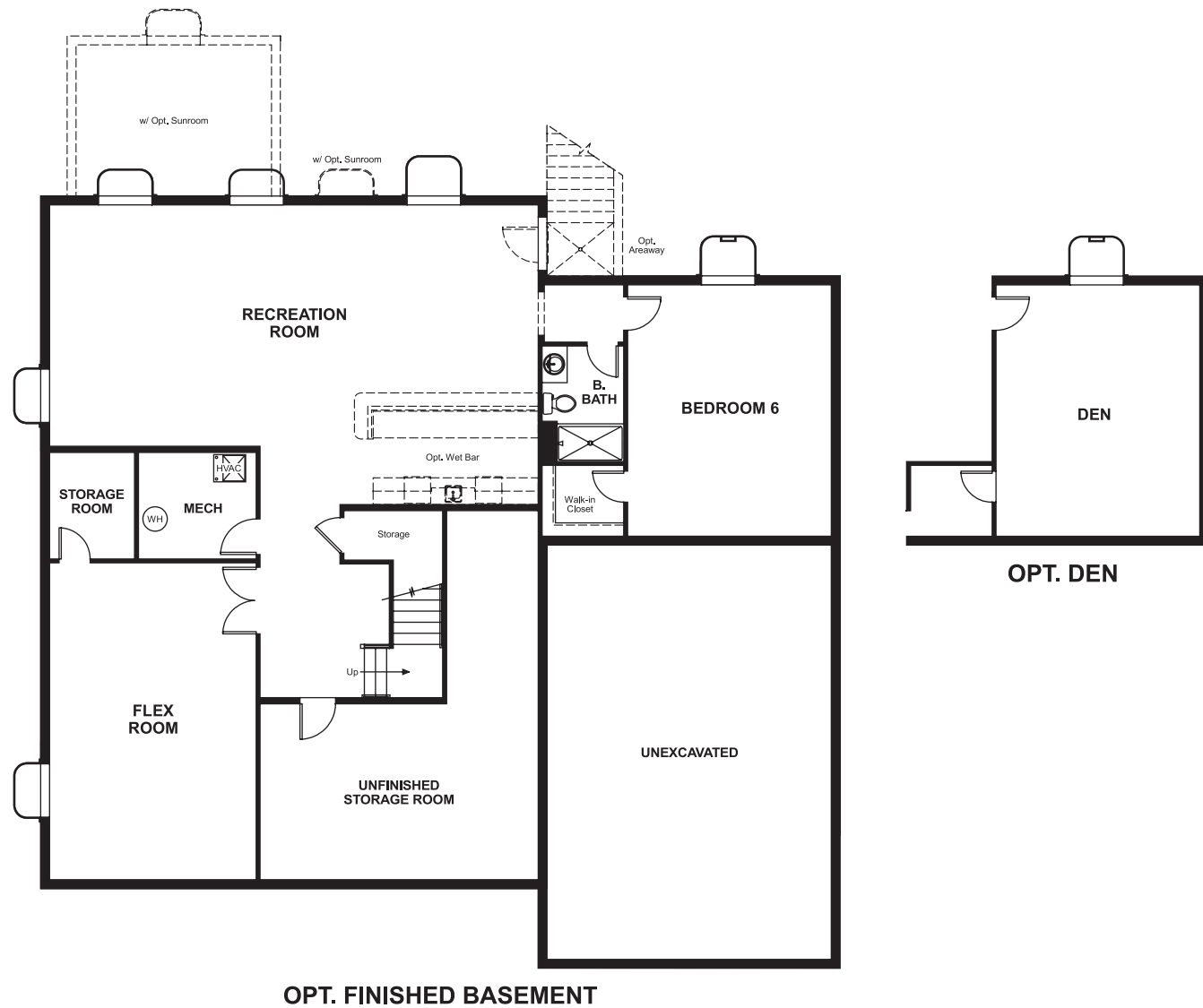
Garage: 2- to 3-car
Plan Number: V572

Aldie Estates
HATHAWAY

Approx. square feet: 4,286
Stories: 2
Bedrooms: 4 - 6
Garage: 2- to 3-car
Plan Number: V572

With a formal living room and dining room, the Hathaway also offers a study, gourmet kitchen, great room and a bedroom on the main level. Upstairs a master bedroom with two spacious bedrooms and a loft creates a family retreat.

Floor Plan
Basement



Elevation A

Available elevations:



Elevation A



Elevation B



Elevation C



Elevation D



Elevation E



Elevation F

COMMUNITY LOCATION

John Mosby Highway and Tenbury Wells Place
Aldie, VA 20105
703-348-0025

HOME GALLERY

11393 Government Center Parkway
Fairfax, VA 22030
703-348-0025



COMMUNITY LOCATION

John Mosby Highway and Tenbury Wells Place
Aldie, VA 20105
703-348-0025

HOME GALLERY

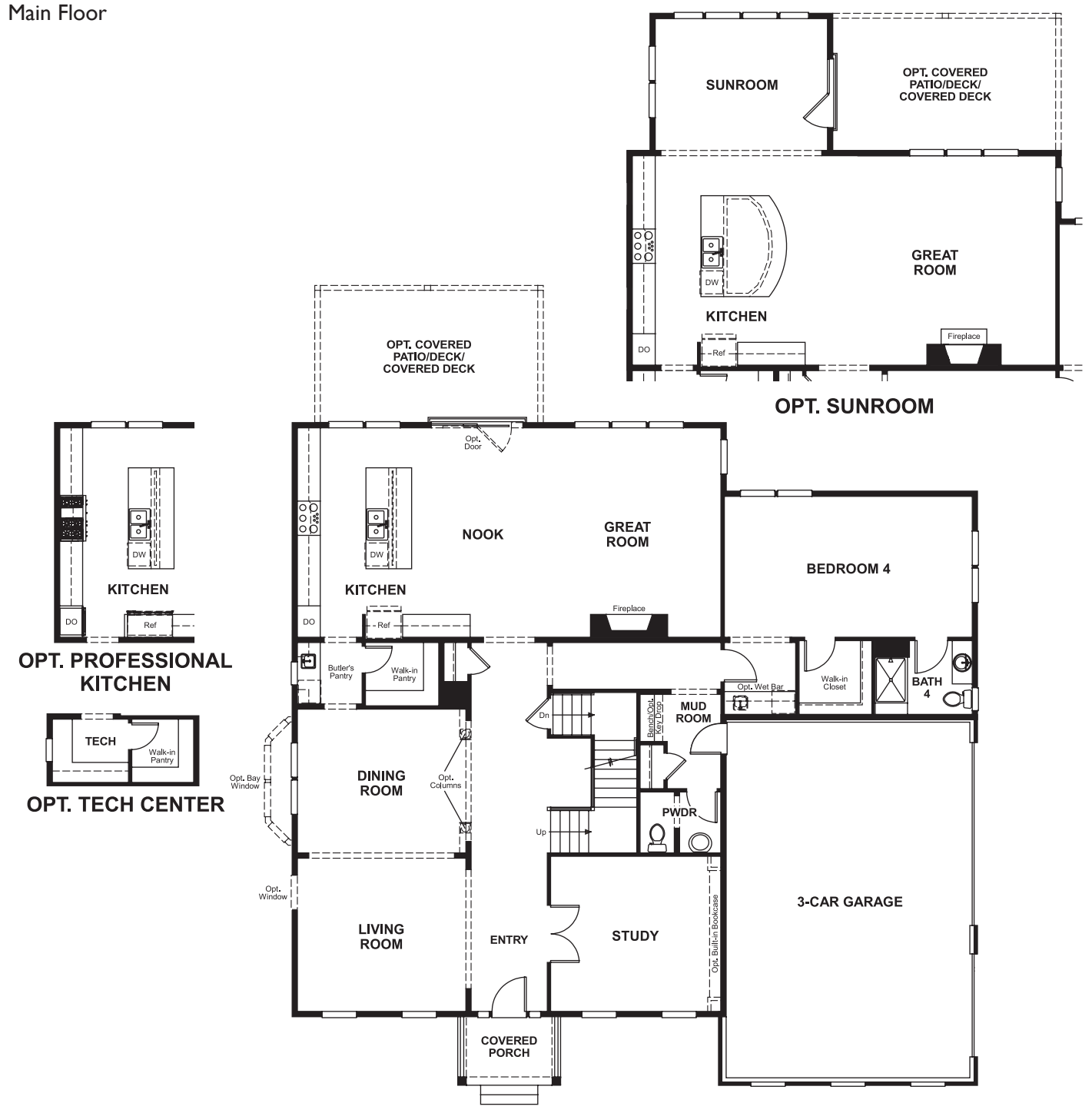
11393 Government Center Parkway
Fairfax, VA 22030
703-348-0025



Aldie Estates
HATHAWAY

Approx. square feet: 4,286
Stories: 2
Bedrooms: 4 - 6
Garage: 2- to 3-car
Plan Number: V572

Floor Plan
Main Floor



Floor Plan
Second Floor

