

HEMINGWAY



Elevation A

Approx. square feet: 2,500

Stories: 2

Bedrooms: 4 - 5

Garage: 2- to 3-car

Plan Number: F250

This plan features an entryway with adjacent living room that can be optioned as a study to suit your needs. At the back of the home, you'll find a great room, a large kitchen with island and a mudroom with walk-in pantry. An upstairs laundry room and loft complete this home.

Available elevations:



Elevation A



Elevation B



Elevation C Shown with optional stone



Elevation D



Elevation E



Elevation F

HOME GALLERY

762 South Northlake Boulevard, #1004
Altamonte Springs, FL 32701
321-418-3095



HOME GALLERY

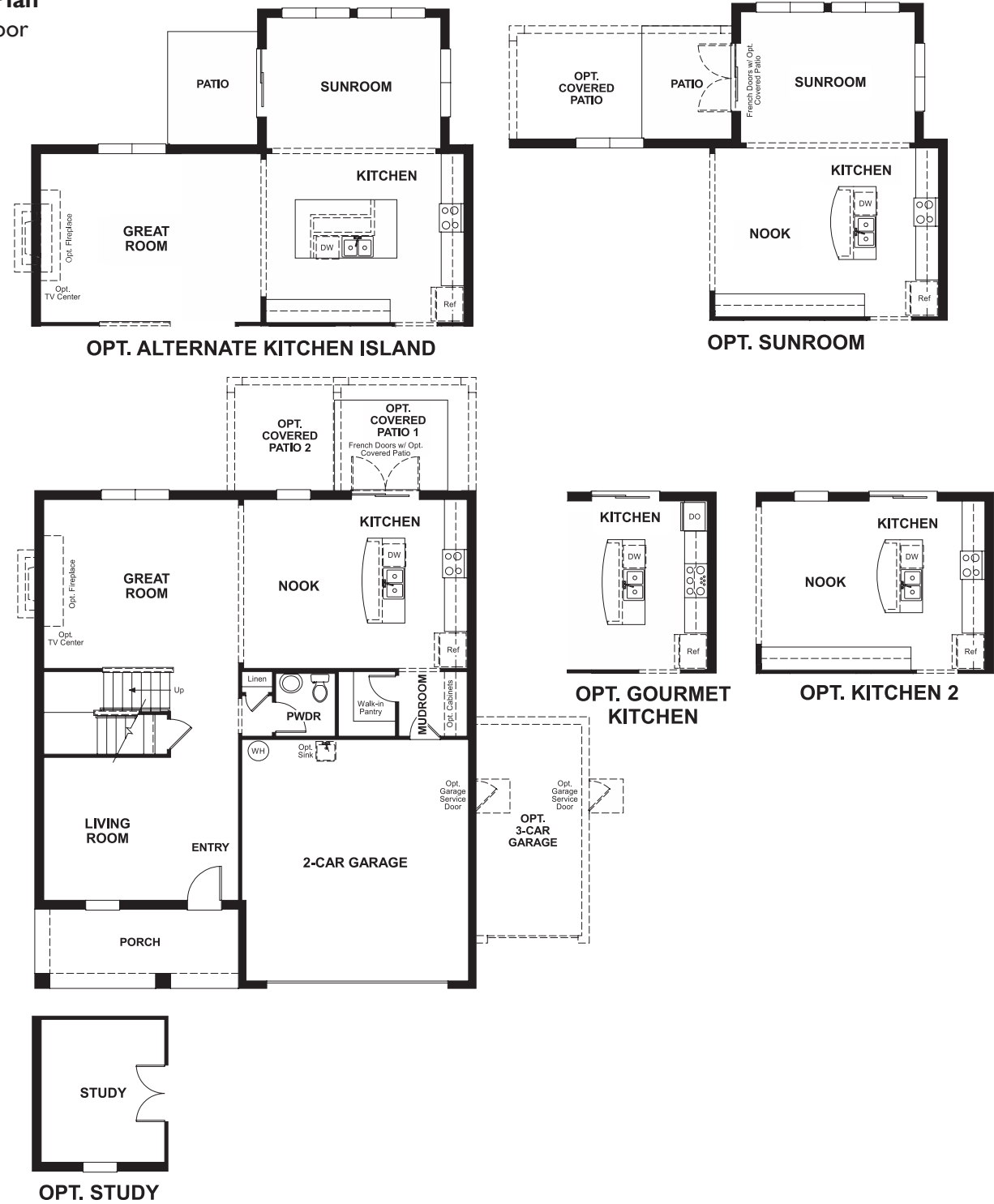
762 South Northlake Boulevard, #1004
Altamonte Springs, FL 32701
321-418-3095



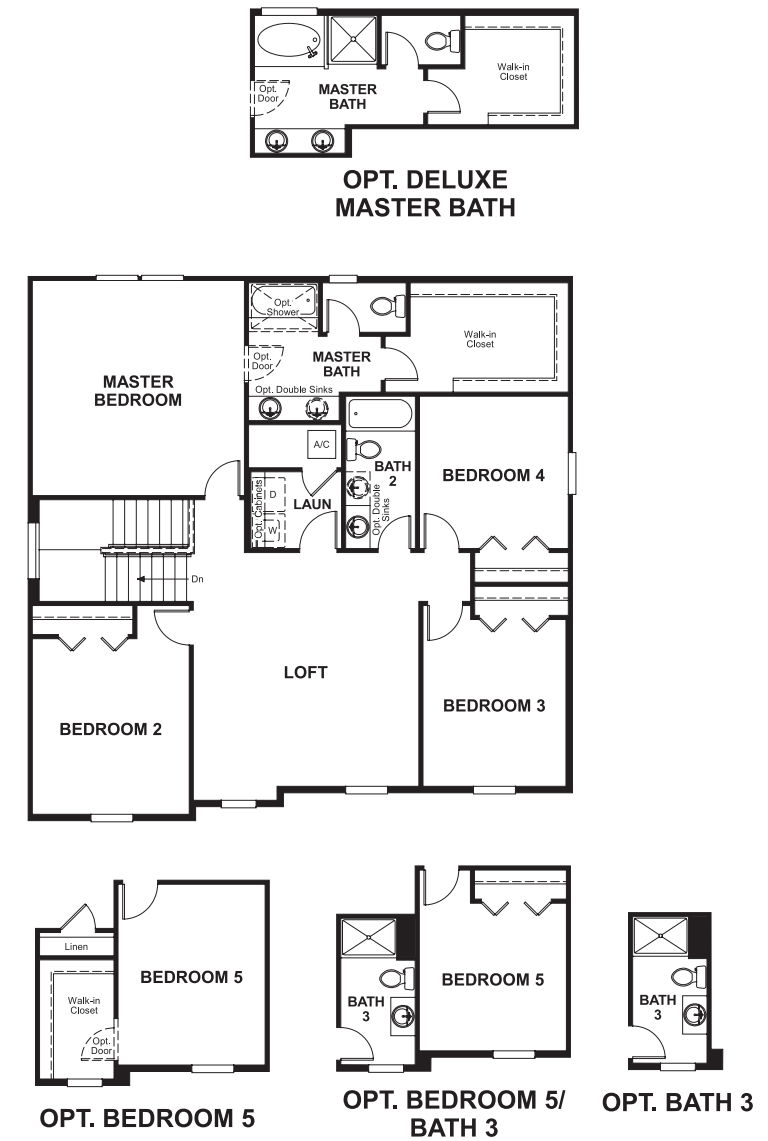
HEMINGWAY

Approx. square feet: 2,500
Stories: 2
Bedrooms: 4 - 5
Garage: 2- to 3-car
Plan Number: F250

Floor Plan
Main Floor



Floor Plan
Second Floor



THIS PLAN'S PROJECTED HERS® INDEX = 64*
Projected Rating Based on Plans – Field Confirmation Required

How does this floor plan rate?
Take a look: **100** = Standard new home* **130** = Typical resale home**
The lower the number, the better! Refer to the RESNET® HERS index brochure or go to www.RESNET.us for details.

What's a HERS® Index? HERS stands for Home Energy Rating System, a system created by RESNET® to measure home energy efficiency. A Projected HERS index or rating is a computer simulation performed prior to construction by a third-party HERS rater using RESNET-accredited rating software, rated feature and specification data derived from home plans, features and specifications, and other data selected or assumed by the rater. The projected HERS index is approximate and is subject to change without notice. Actual results will vary.

*This information is presented for education purposes only. The HERS index for a confirmed rating will be determined by a third-party HERS rater based on data gathered from on-site observations and, if required, testing of rated features for a home as featured, optioned, located, oriented and/or built.
+Standard new home is based on the RESNET® Reference Home definition with a HERS® index of 100 (based on the 2006 International Energy Conservation Code).
**Typical resale home is based on the U.S. Department of Energy definition with a HERS® index of 130.

^RESNET® has developed the HERS® index to indicate the comparative efficiencies of homes. It is no guarantee that energy efficiencies will be achieved.