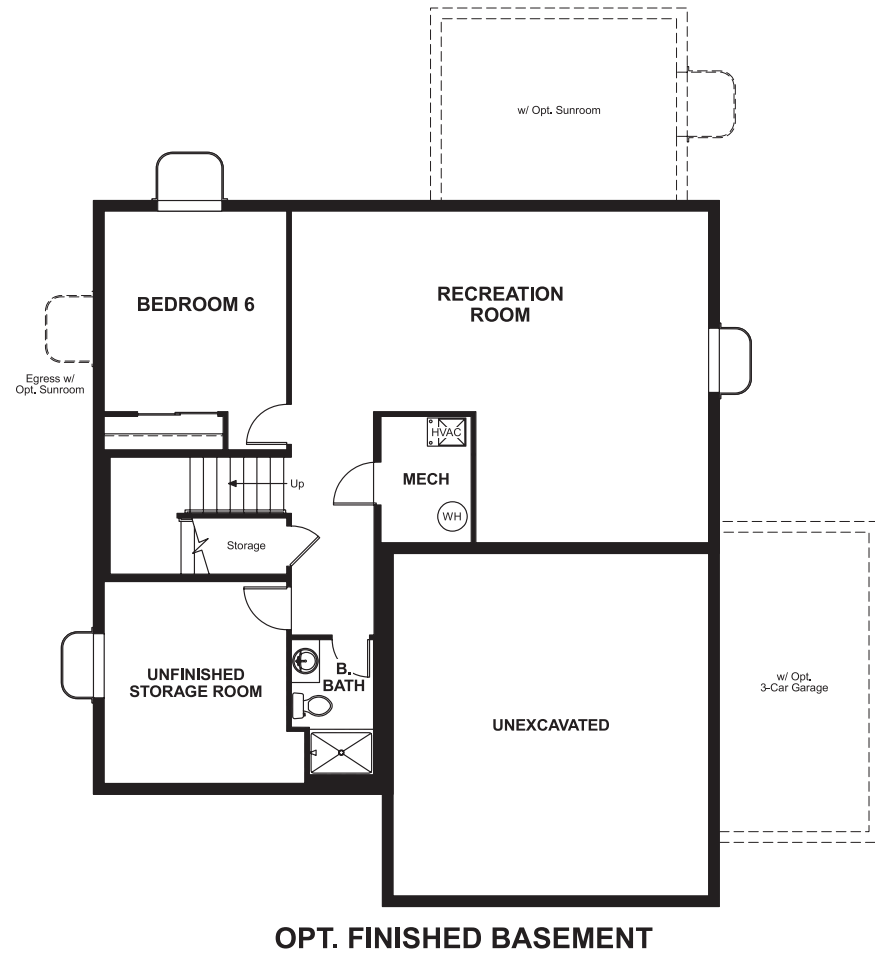


Gambel Oak
HEMINGWAY

Approx. square feet: 2,500
Stories: 2
Bedrooms: 4 - 6

Garage: 2- to 3-car
Plan Number: D250

Floor Plan
Basement



Elevation C

Available elevations:



Elevation C



Elevation D



Elevation H



Elevation K

Approx. square feet: 2,500
Stories: 2
Bedrooms: 4 - 6
Garage: 2- to 3-car
Plan Number: D250

This plan features an entryway with adjacent flex space that can be personalized to suit your needs. At the back of the home, you'll find a great room with optional corner fireplace, a large kitchen with island and walk-in pantry. An upstairs laundry room and loft complete this home.

COMMUNITY LOCATION
Low Meadow Boulevard & Treetop Drive
Castle Rock, CO 80109
303-660-0950

HOME GALLERY
8000 East Bellview Avenue, Suite C-12
Greenwood Village, CO 80111
888-402-4663



COMMUNITY LOCATION
Low Meadow Boulevard & Treetop Drive
Castle Rock, CO 80109
303-660-0950

HOME GALLERY
8000 East Bellview Avenue, Suite C-12
Greenwood Village, CO 80111
888-402-4663

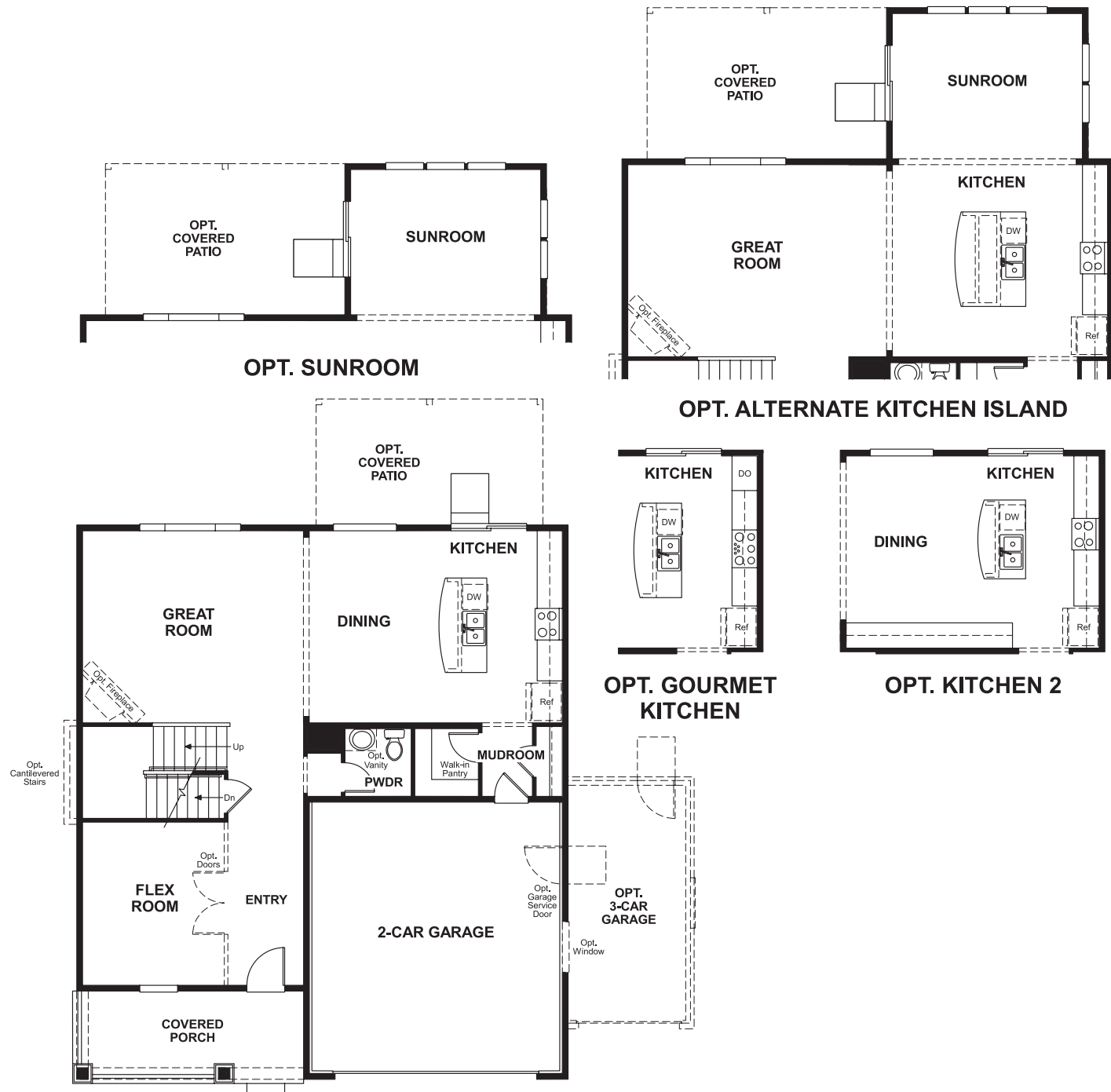


Gambel Oak
HEMINGWAY

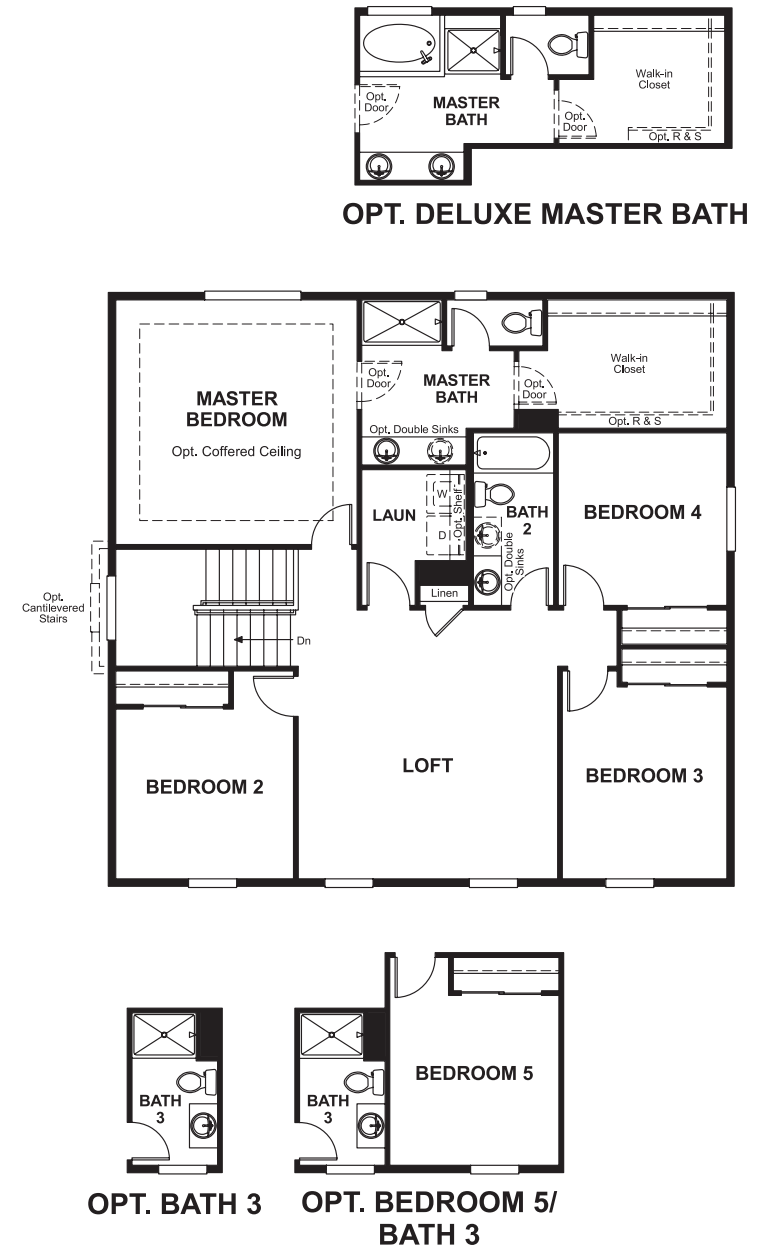
Approx. square feet: 2,500
Stories: 2
Bedrooms: 4 - 6

Garage: 2- to 3-car
Plan Number: D250

Floor Plan
Main Floor



Floor Plan
Second Floor



**THIS PLAN'S PROJECTED
HERS® INDEX = 56***
Projected Rating Based on Plans – Field Confirmation Required

How does this floor plan rate?
Take a look: **100** = Standard new home* **130** = Typical resale home**
The lower the number, the better! Refer to the RESNET® HERS index brochure or go to www.RESNET.us for details.

What's a HERS® Index? HERS stands for Home Energy Rating System, a system created by RESNET® to measure home energy efficiency.[^]
A Projected HERS index or rating is a computer simulation performed prior to construction by a third-party HERS rater using RESNET-accredited rating software, rated feature and specification data derived from home plans, features and specifications, and other data selected or assumed by the rater. The projected HERS index is approximate and is subject to change without notice. Actual results will vary.

*This information is presented for education purposes only. The HERS index for a confirmed rating will be determined by a third-party HERS rater based on data gathered from on-site observations and, if required, testing of rated features for a home as featured, optioned, located, oriented and/or built.
+Standard new home is based on the RESNET® Reference Home definition with a HERS® index of 100 (based on the 2006 International Energy Conservation Code).
**Typical resale home is based on the U.S. Department of Energy definition with a HERS® index of 130.

[^]RESNET® has developed the HERS® index to indicate the comparative efficiencies of homes. It is no guarantee that energy efficiencies will be achieved.