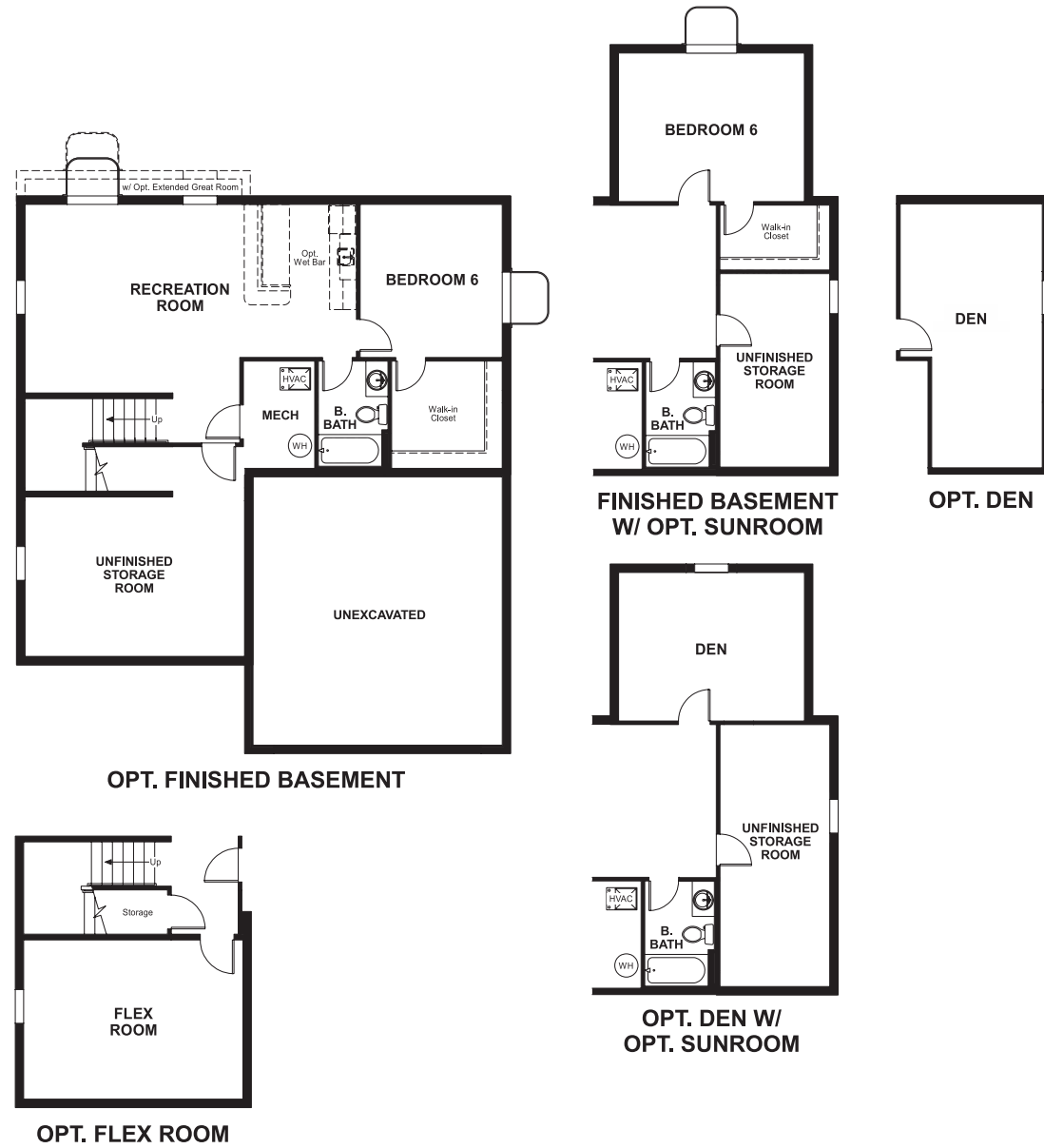


Lovettsville Town Center
HEMINGWAY

Approx. square feet: 2,450
Stories: 2
Bedrooms: 4 - 6

Garage: 2-car
Plan Number: M250

Floor Plan
Basement



Elevation B

Available elevations:



Elevation B



Elevation C



Elevation D



Elevation E



Elevation F

Approx. square feet: 2,450
Stories: 2
Bedrooms: 4 - 6
Garage: 2-car
Plan Number: M250

This plan features an entryway with adjacent flex space that can be personalized to suit your needs. At the back of the home, you'll find a great room with optional corner fireplace, a large kitchen with island and a mudroom with walk-in pantry. An upstairs laundry room and loft complete this home.

COMMUNITY LOCATION
70 Eisentown Drive
Lovettsville, VA 20180
540-548-4435

HOME GALLERY
11393 Government Center Parkway
Fairfax, VA 22030
888-891-7349

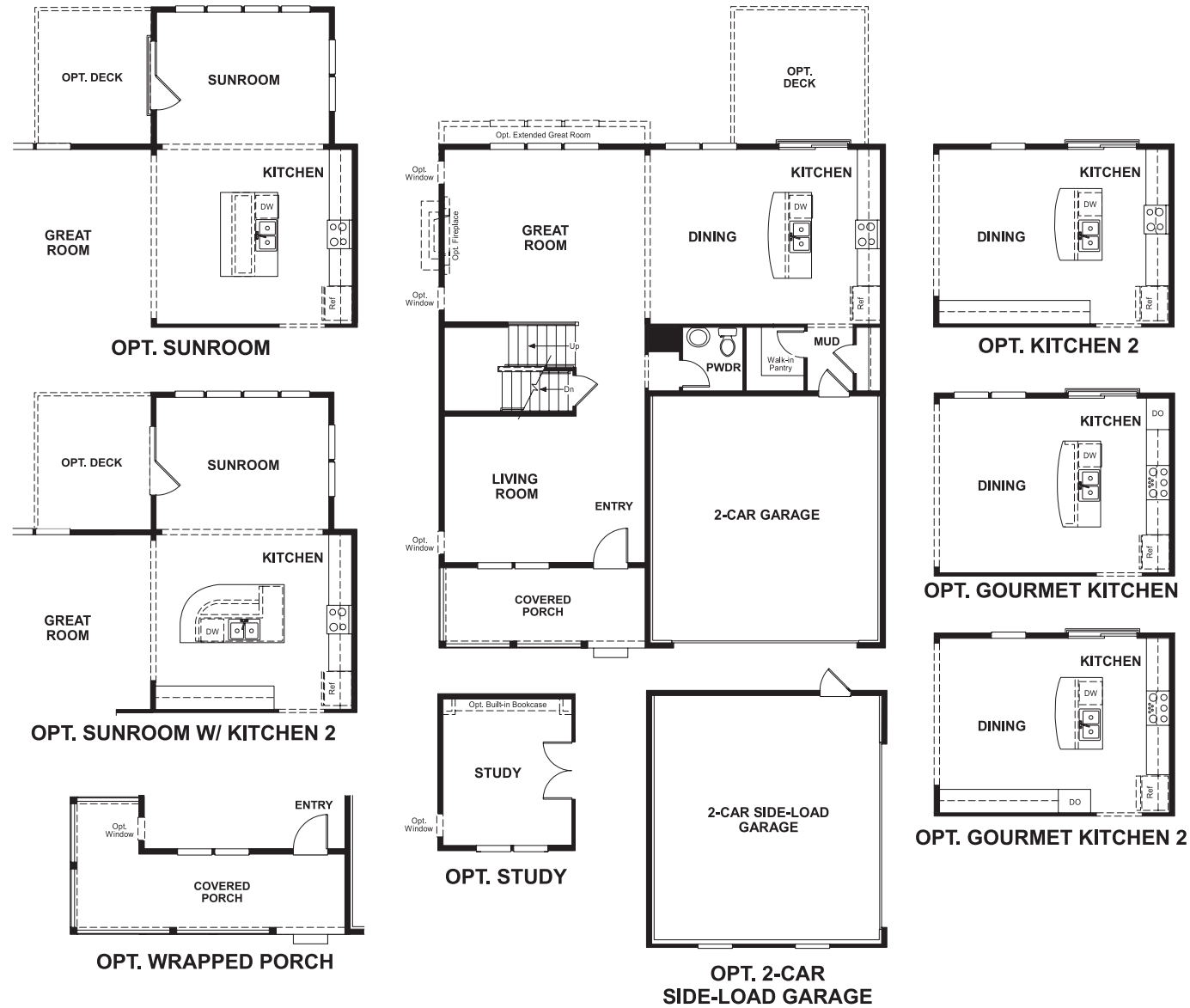


COMMUNITY LOCATION
70 Eisentown Drive
Lovettsville, VA 20180
540-548-4435

HOME GALLERY
11393 Government Center Parkway
Fairfax, VA 22030
888-891-7349



Floor Plan
Main Floor



Floor Plan
Second Floor

