

Summerwood Park  
**HEMINGWAY**

**Approx. square feet:** 2,500  
**Stories:** 2  
**Bedrooms:** 4 - 5

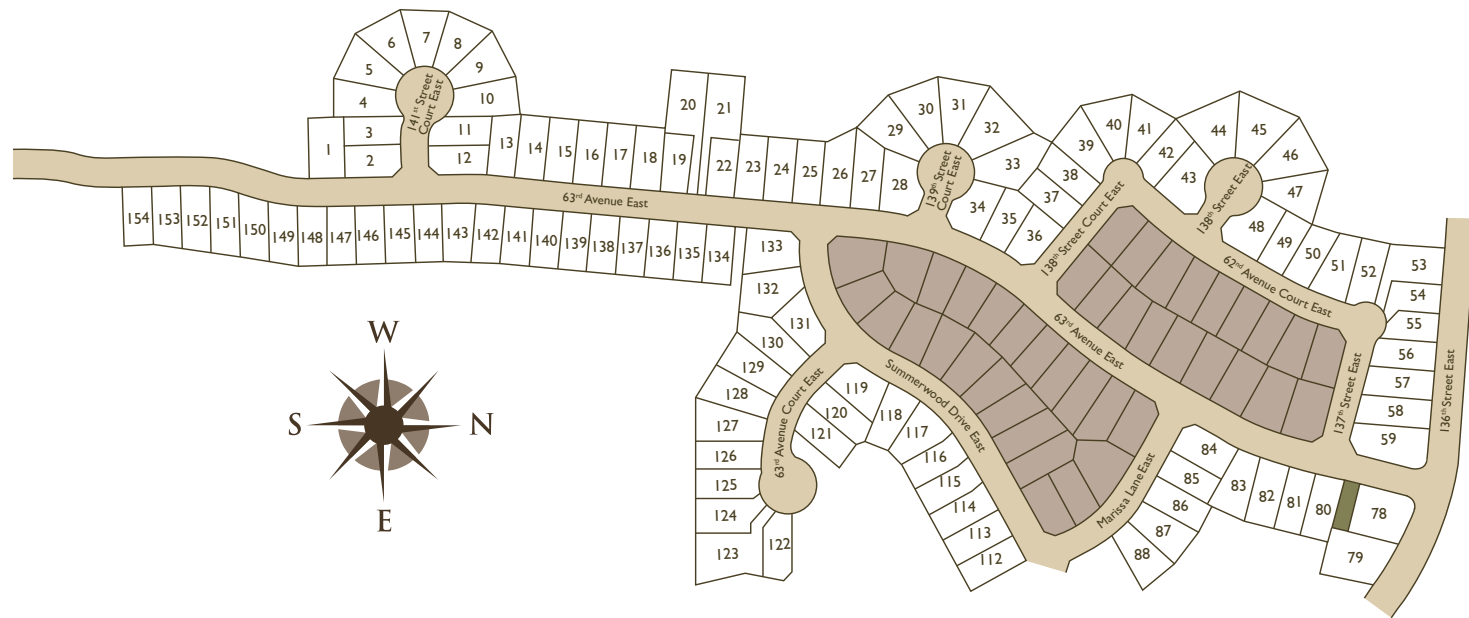
**Garage:** 2- to 3-car  
**Plan Number:** W250

Summerwood Park  
**HEMINGWAY**

**Approx. square feet:** 2,500  
**Stories:** 2  
**Bedrooms:** 4 - 5  
**Garage:** 2- to 3-car  
**Plan Number:** W250

The main floor of the Hemingway features versatile flex space, a great room with fireplace, a large kitchen with central island and an optional covered patio. Upstairs, you'll find a convenient laundry, a spacious loft and a lavish master suite with an optional deluxe bath. Other options include a chef's kitchen and study.

**Sitemap**



**Elevation B**

**Available elevations:**



**Elevation B**



**Elevation C**



**Elevation D**



**Elevation E**

**COMMUNITY LOCATION**  
13705 63rd Avenue East  
Puyallup, WA 98375  
253-693-4808

**HOME GALLERY**  
20829 72nd Avenue South, Suite 115  
Kent, WA 98032  
253-446-7277



**COMMUNITY LOCATION**  
13705 63rd Avenue East  
Puyallup, WA 98375  
253-693-4808

**HOME GALLERY**  
20829 72nd Avenue South, Suite 115  
Kent, WA 98032  
253-446-7277

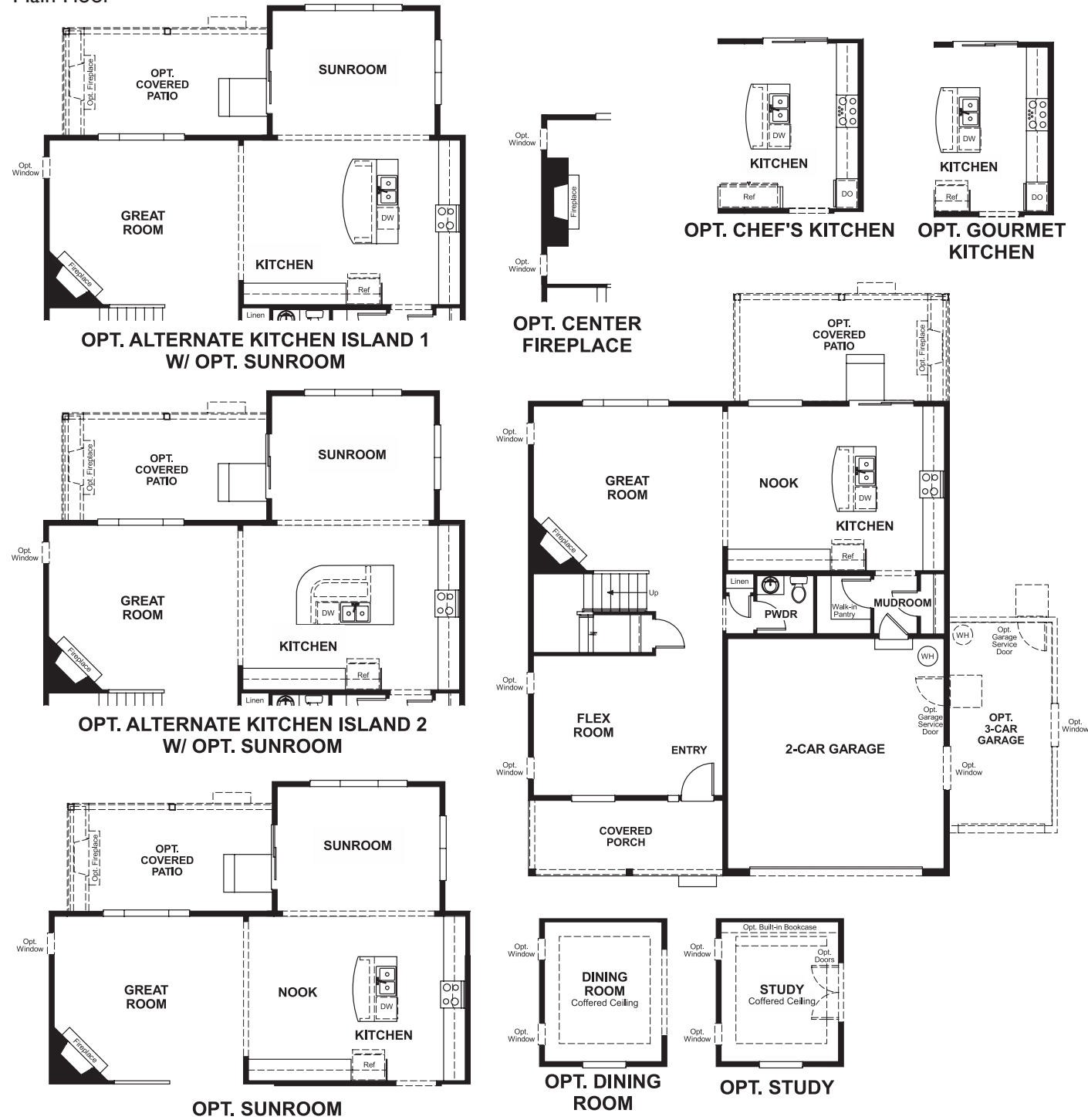


Summerwood Park  
**HEMINGWAY**

**Approx. square feet:** 2,500  
**Stories:** 2  
**Bedrooms:** 4 - 5

**Garage:** 2- to 3-car  
**Plan Number:** W250

**Floor Plan**  
Main Floor



**Floor Plan**  
Second Floor



**THIS PLAN'S PROJECTED HERS® INDEX = 67\***  
Projected Rating Based on Plans – Field Confirmation Required

**How does this floor plan rate?**  
Take a look: **100** = Standard new home\* **130** = Typical resale home\*\*  
The lower the number, the better! Refer to the RESNET® HERS index brochure or go to [www.RESNET.us](http://www.RESNET.us) for details.

**What's a HERS® Index?** HERS stands for Home Energy Rating System, a system created by RESNET® to measure home energy efficiency.<sup>^</sup>  
A Projected HERS index or rating is a computer simulation performed prior to construction by a third-party HERS rater using RESNET-accredited rating software, rated feature and specification data derived from home plans, features and specifications, and other data selected or assumed by the rater. The projected HERS index is approximate and is subject to change without notice. Actual results will vary.

\*This information is presented for education purposes only. The HERS index for a confirmed rating will be determined by a third-party HERS rater based on data gathered from on-site observations and, if required, testing of rated features for a home as featured, optioned, located, oriented and/or built.  
+Standard new home is based on the RESNET® Reference Home definition with a HERS® index of 100 (based on the 2006 International Energy Conservation Code).  
\*\*Typical resale home is based on the U.S. Department of Energy definition with a HERS® index of 130.

<sup>^</sup>RESNET® has developed the HERS® index to indicate the comparative efficiencies of homes. It is no guarantee that energy efficiencies will be achieved.