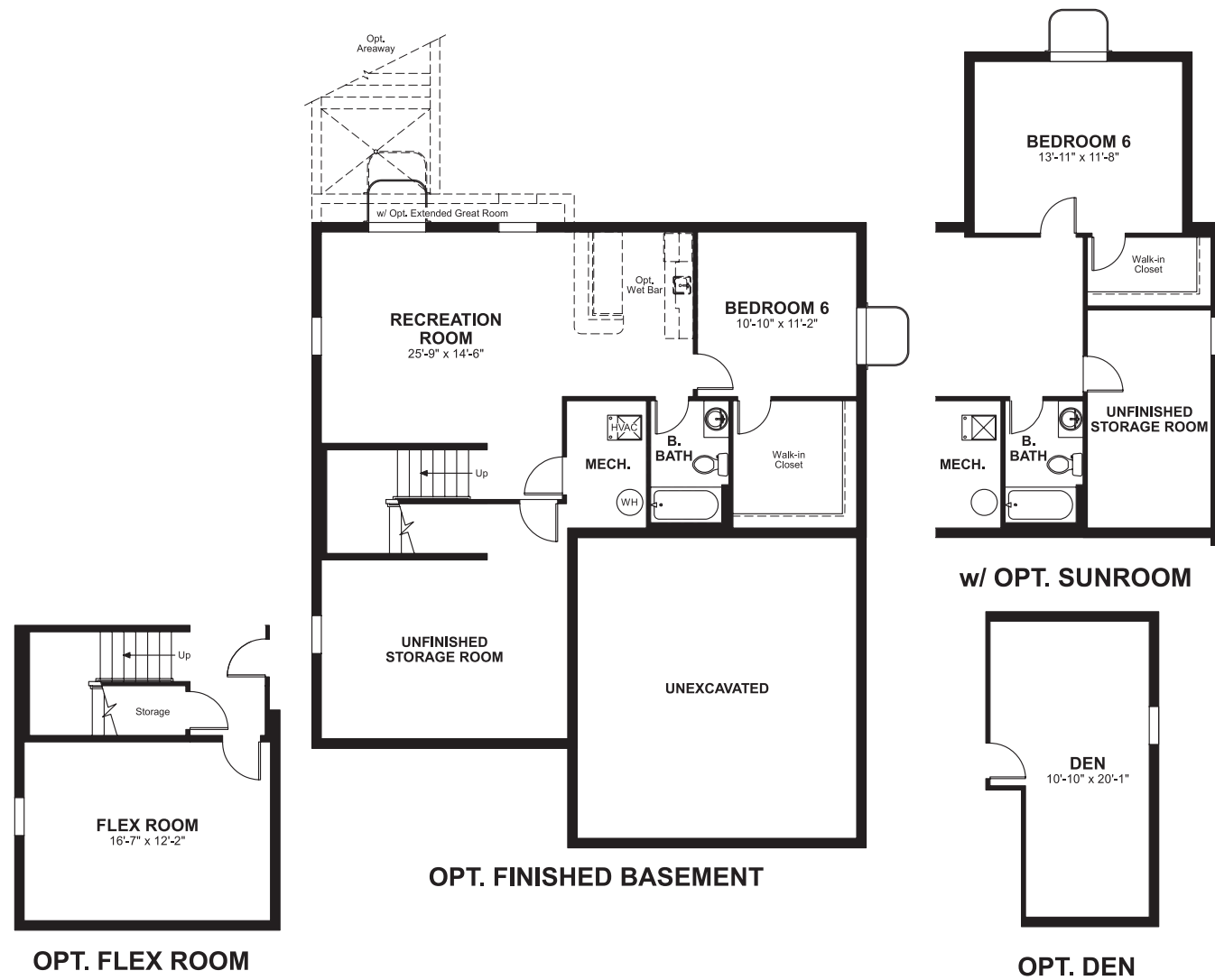


Berryville Glen  
**HEMINGWAY**

**Approx. square feet:** 2,450  
**Stories:** 2  
**Bedrooms:** 4 - 6

**Garage:** 2-car  
**Plan Number:** M250

**Floor Plan**  
Basement



**Elevation A**

**Available elevations:**



**Elevation A**



**Elevation B**



**Elevation C**



**Elevation D**



**Elevation E**



**Elevation F**

**Approx. square feet:** 2,450  
**Stories:** 2  
**Bedrooms:** 4 - 6  
**Garage:** 2-car  
**Plan Number:** M250

This plan features an entryway with adjacent flex space that can be personalized to suit your needs. At the back of the home, you'll find a great room with optional corner fireplace, a large kitchen with island and a mudroom with walk-in pantry. An upstairs laundry room and loft complete this home.

**COMMUNITY LOCATION**  
700 McGuire Circle  
Berryville Glen, VA 22611  
540-548-4435

**HOME GALLERY**  
11393 Government Center Parkway  
Fairfax, VA 22030  
888-891-7349



**COMMUNITY LOCATION**  
700 McGuire Circle  
Berryville Glen, VA 22611  
540-548-4435

**HOME GALLERY**  
11393 Government Center Parkway  
Fairfax, VA 22030  
888-891-7349



Berryville Glen  
**HEMINGWAY**

**Approx. square feet:** 2,450  
**Stories:** 2  
**Bedrooms:** 4 - 6

**Garage:** 2-car  
**Plan Number:** M250

**Floor Plan**  
First Floor



**Floor Plan**  
Second Floor

