

HOLBROOK



Elevation A

Approx. square feet: 3,150

Stories: 2

Bedrooms: 3 - 4

Garage: 3-car

Plan Number: F31H

The ranch-style Holbrook plan offers a formal dining room connected to the optional gourmet kitchen via a butler's pantry. A large kitchen island overlooks the nook and great room, with views of the covered patio. The master suite includes two walk-in closets and an optional deluxe bath. A study, convenient laundry and two bedrooms with a Jack-and-Jill bath complete this home.

Available elevations:



Elevation A



Elevation B



Elevation C - Shown w/ opt. stone



Elevation D



Elevation E



Elevation F



Elevation G



Elevation H



Elevation J

HOME GALLERY
2822 Commerce Park Drive, Suite 100
Orlando, FL 32819

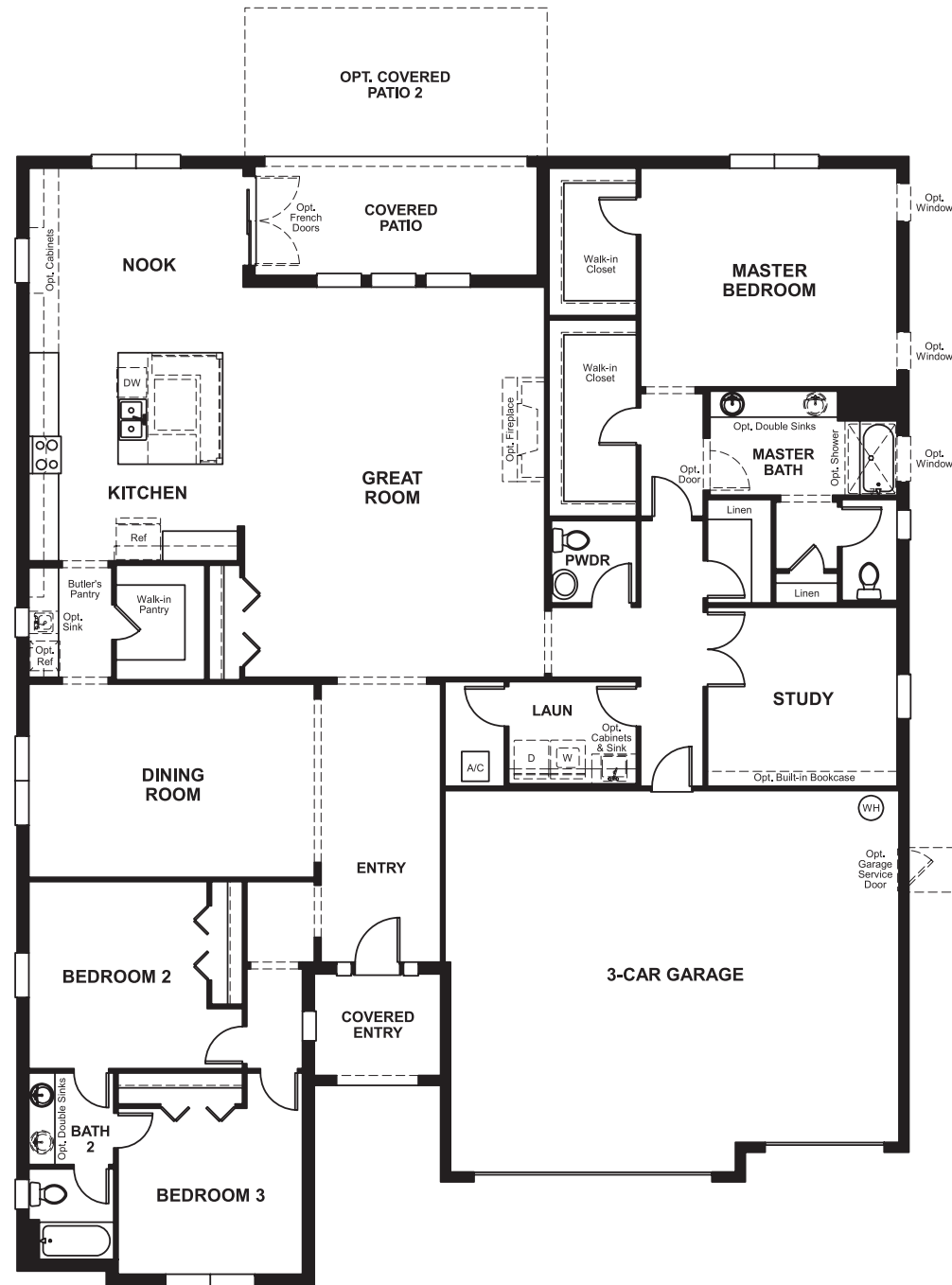
HOME GALLERY
2822 Commerce Park Drive, Suite 100
Orlando, FL 32819

HOLBROOK

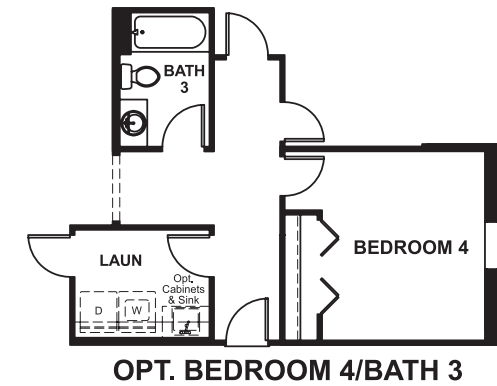
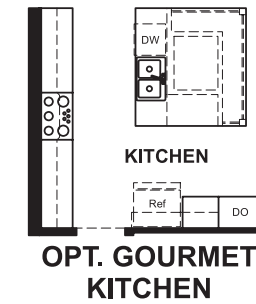
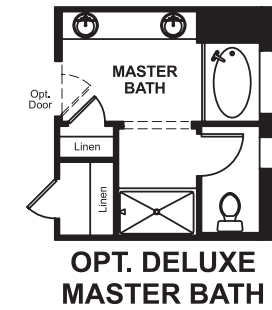
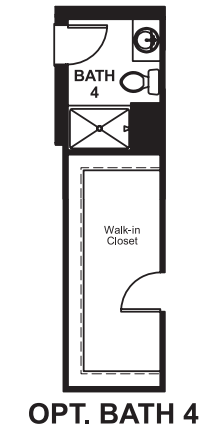
Approx. square feet: 3,150
Stories: 2
Bedrooms: 3 - 4

Garage: 3-car
Plan Number: F31H

Floor Plan Main Floor



Floor Plan Main Floor Options



**THIS PLAN'S PROJECTED
HERS® INDEX = 64***
Projected Rating Based on Plans – Field Confirmation Required

How does this floor plan rate?
Take a look: **100** = Standard new home* **130** = Typical resale home**
The lower the number, the better! Refer to the RESNET® HERS index brochure or go to www.RESNET.us for details.

What's a HERS® Index? HERS stands for Home Energy Rating System, a system created by RESNET® to measure home energy efficiency. A Projected HERS index or rating is a computer simulation performed prior to construction by a third-party HERS rater using RESNET-accredited rating software, rated feature and specification data derived from home plans, features and specifications, and other data selected or assumed by the rater. The projected HERS index is approximate and is subject to change without notice. Actual results will vary.

*This information is presented for education purposes only. The HERS index for a confirmed rating will be determined by a third-party HERS rater based on data gathered from on-site observations and, if required, testing of rated features for a home as featured, optioned, located, oriented and/or built.
+Standard new home is based on the RESNET® Reference Home definition with a HERS® index of 100 (based on the 2006 International Energy Conservation Code).
++Typical resale home is based on the U.S. Department of Energy definition with a HERS® index of 130.

^RESNET® has developed the HERS® index to indicate the comparative efficiencies of homes. It is no guarantee that energy efficiencies will be achieved.