

HOLBROOK



Elevation A

Approx. square feet: 3,150

Stories: 1

Bedrooms: 3 - 4

Garage: 3-car

Plan Number: J31H

At the heart of the ranch-style Holbrook plan is an expansive great room that overlooks a covered patio and spacious gourmet kitchen with a center island, walk-in pantry and nook. You'll also appreciate a formal dining room with an adjacent butler's pantry, a quiet study, which can be optioned as an additional bedroom, and a relaxing master suite with a deluxe bath. Personalize this plan with an upgraded master tub, multi-slide patio doors and more!

Available elevations:



Elevation A



Elevation B



Elevation C - shown with opt. stone



Elevation D



Elevation E



Elevation F

HOME GALLERY
1560 Wells Road, Building A, Suite 105
Orange Park, FL 32073
1-800-221-3014



HOME GALLERY
1560 Wells Road, Building A, Suite 105
Orange Park, FL 32073
1-800-221-3014

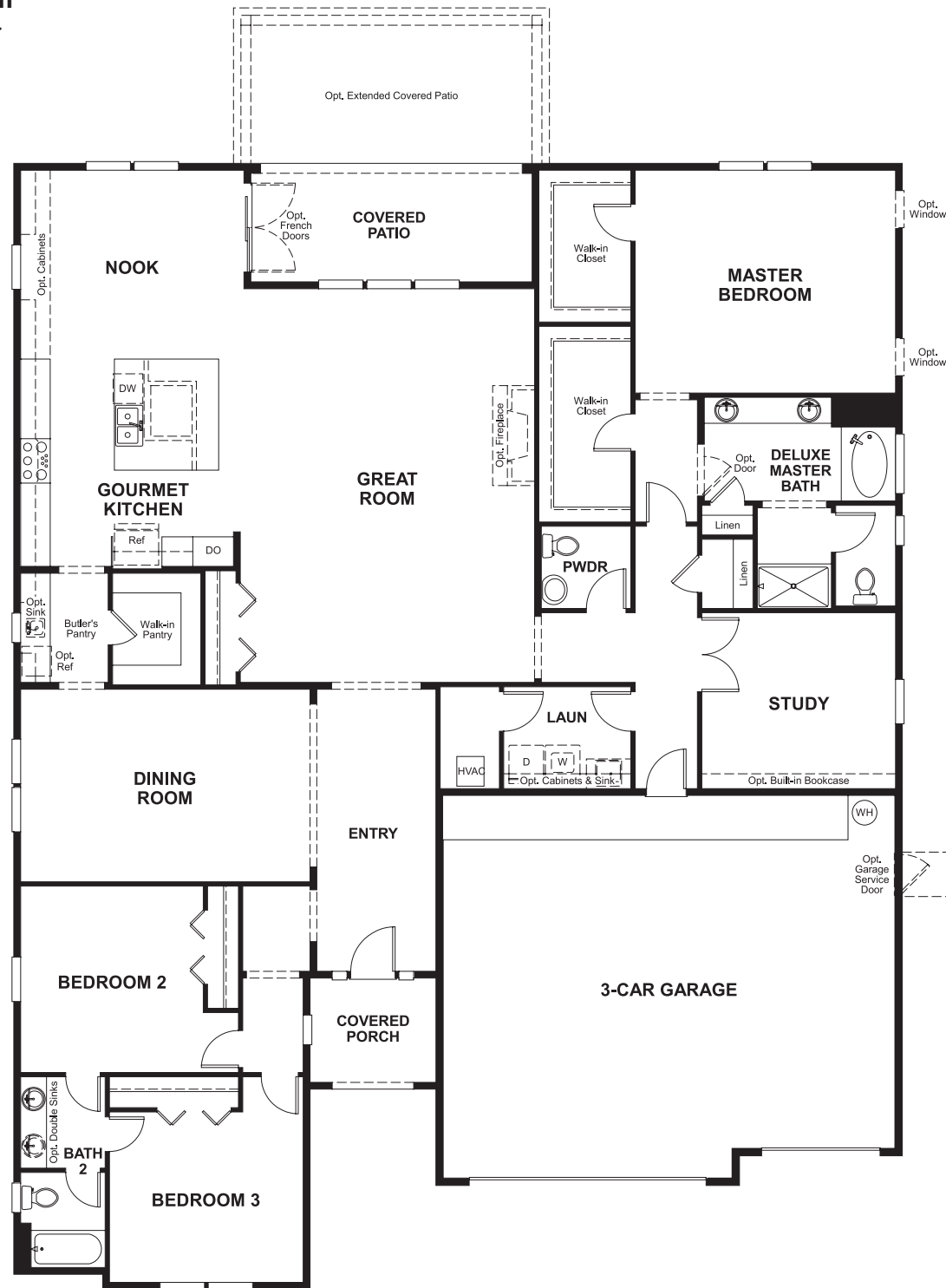


HOLBROOK

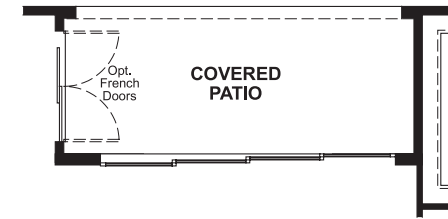
Approx. square feet: 3,150
Stories: 1
Bedrooms: 3 - 4

Garage: 3-car
Plan Number: J31H

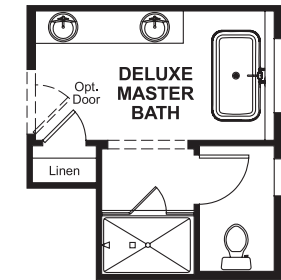
Floor Plan Main Floor



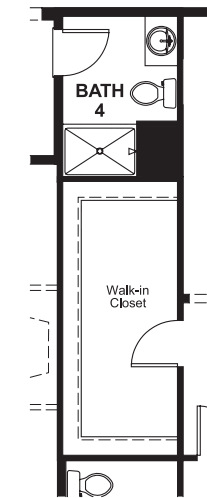
Floor Plan Main Floor Options



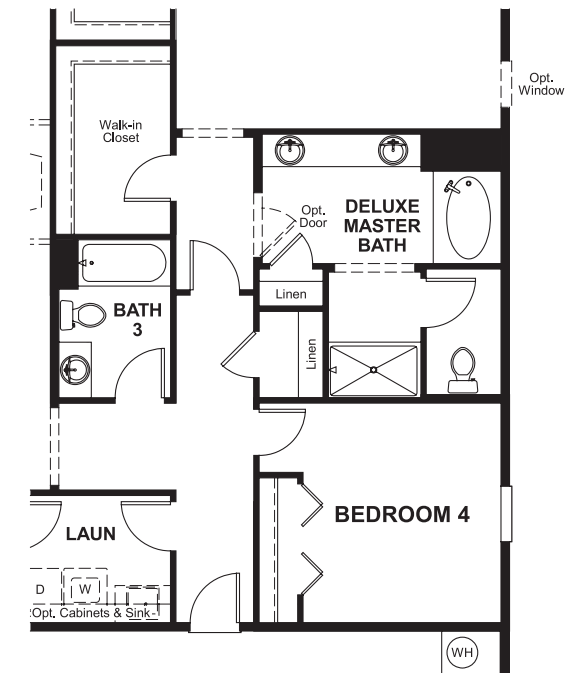
OPT. MULTI-SLIDE DOORS



OPT. DELUXE
MASTER BATH 2



OPT. BATH 4



OPT. BEDROOM 4/BATH 3

**THIS PLAN'S PROJECTED
HERS® INDEX = 61** *
Projected Rating Based on Plans – Field Confirmation Required

How does this floor plan rate?
Take a look: 100 = Standard new home* 130 = Typical resale home**
The lower the number, the better! Refer to the RESNET® HERS index brochure or go to www.RESNET.us for details.

What's a HERS® Index? HERS stands for Home Energy Rating System, a system created by RESNET® to measure home energy efficiency.[^]
A Projected HERS index or rating is a computer simulation performed prior to construction by a third-party HERS rater using RESNET-accredited rating software, rated feature and specification data derived from home plans, features and specifications, and other data selected or assumed by the rater. The projected HERS index is approximate and is subject to change without notice. Actual results will vary.

*This information is presented for education purposes only. The HERS index for a confirmed rating will be determined by a third-party HERS rater based on data gathered from on-site observations and, if required, testing of rated features for a home as featured, optioned, located, oriented and/or built.
+Standard new home is based on the RESNET® Reference Home definition with a HERS® index of 100 (based on the 2006 International Energy Conservation Code).
++Typical resale home is based on the U.S. Department of Energy definition with a HERS® index of 130.

[^]RESNET® has developed the HERS® index to indicate the comparative efficiencies of homes. It is no guarantee that energy efficiencies will be achieved.