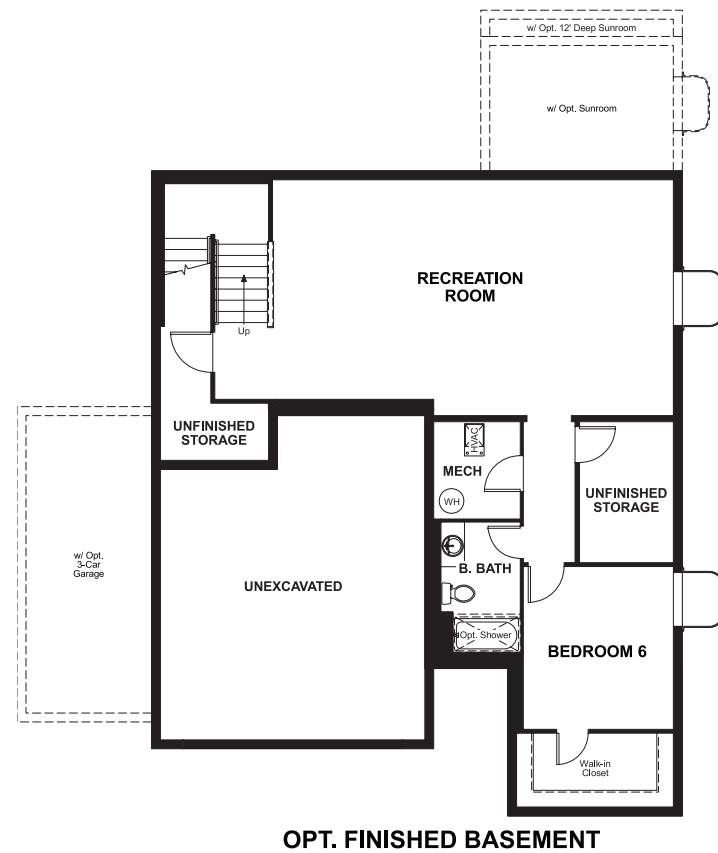


Cobblestone Ranch  
**HOPEWELL**

**Approx. square feet:** 2,650  
**Stories:** 2  
**Bedrooms:** 3 - 6

**Garage:** 2- to 3-car  
**Plan Number:** D724

**Floor Plan**  
Basement



Cobblestone Ranch  
**HOPEWELL**

**Approx. square feet:** 2,650  
**Stories:** 2  
**Bedrooms:** 3 - 6  
**Garage:** 2- to 3-car  
**Plan Number:** D724



**Elevation A**

Love to entertain? The Hopewell's wide open great room and dining area are ideal for gathering with friends and family. The adjacent kitchen allows you to interact with guests without interrupting meal prep. Opt for a sunroom or covered patio for even more space to mingle. Upstairs, enjoy a loft, two guest rooms and a large master bedroom with a private bath and immense walk-in closet. Personalize with a tech center, bonus bedrooms, a deluxe master bath and more.

**Available elevations:**



**Elevation A**



**Elevation B**



**Elevation C**



**Elevation D**



**Elevation E**

**COMMUNITY LOCATION**  
7458 Grady Circle  
Castle Rock, CO 80108  
720-851-5828

**HOME GALLERY**  
8000 East Belleview Avenue, Suite C-12  
Greenwood Village, CO 80111  
888-402-4663



**COMMUNITY LOCATION**  
7458 Grady Circle  
Castle Rock, CO 80108  
720-851-5828

**HOME GALLERY**  
8000 East Belleview Avenue, Suite C-12  
Greenwood Village, CO 80111  
888-402-4663

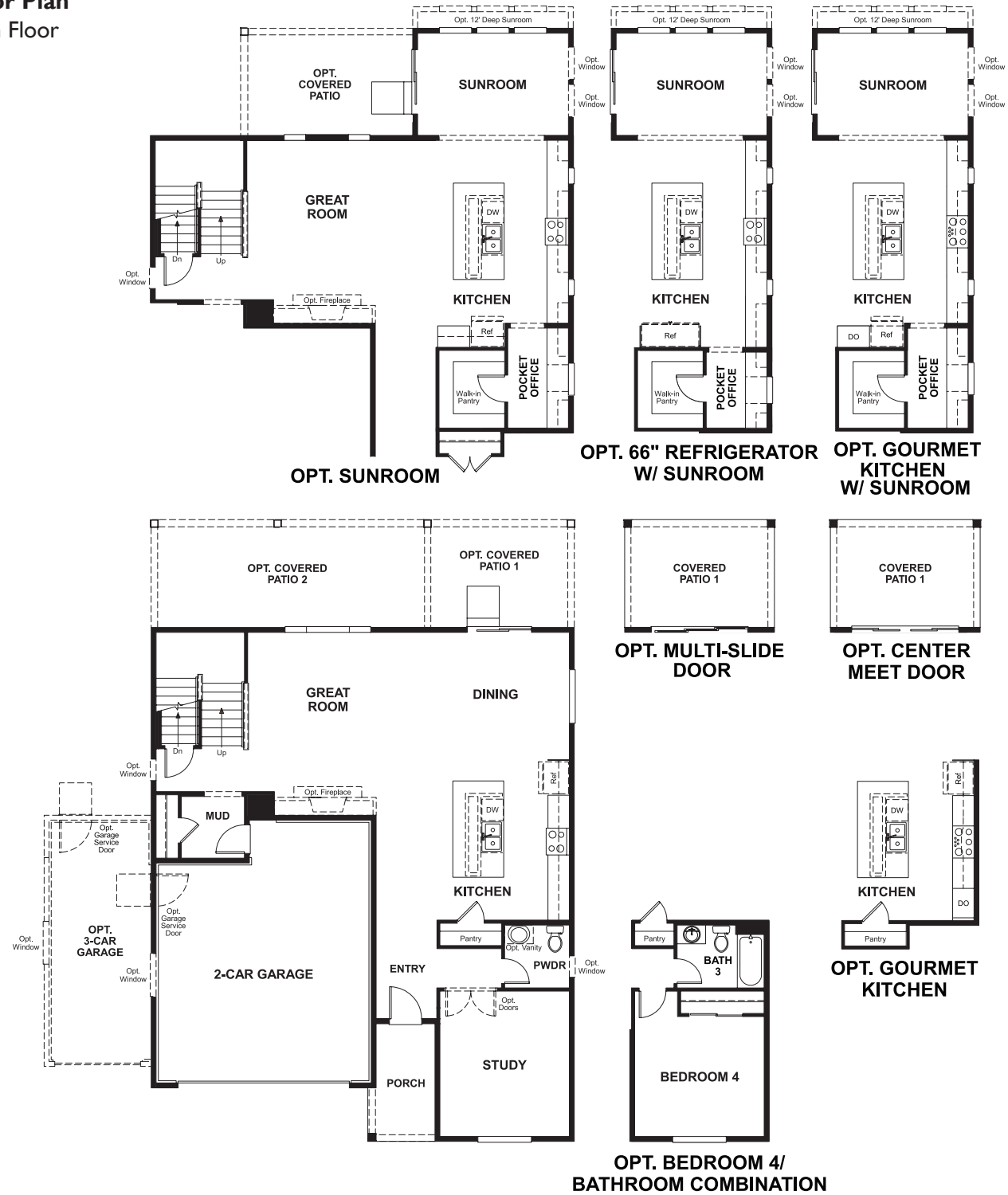


Cobblestone Ranch  
**HOPEWELL**

Approx. square feet: 2,650  
Stories: 2  
Bedrooms: 3 - 6

Garage: 2- to 3-car  
Plan Number: D724

**Floor Plan**  
Main Floor



**Floor Plan**  
Second Floor

