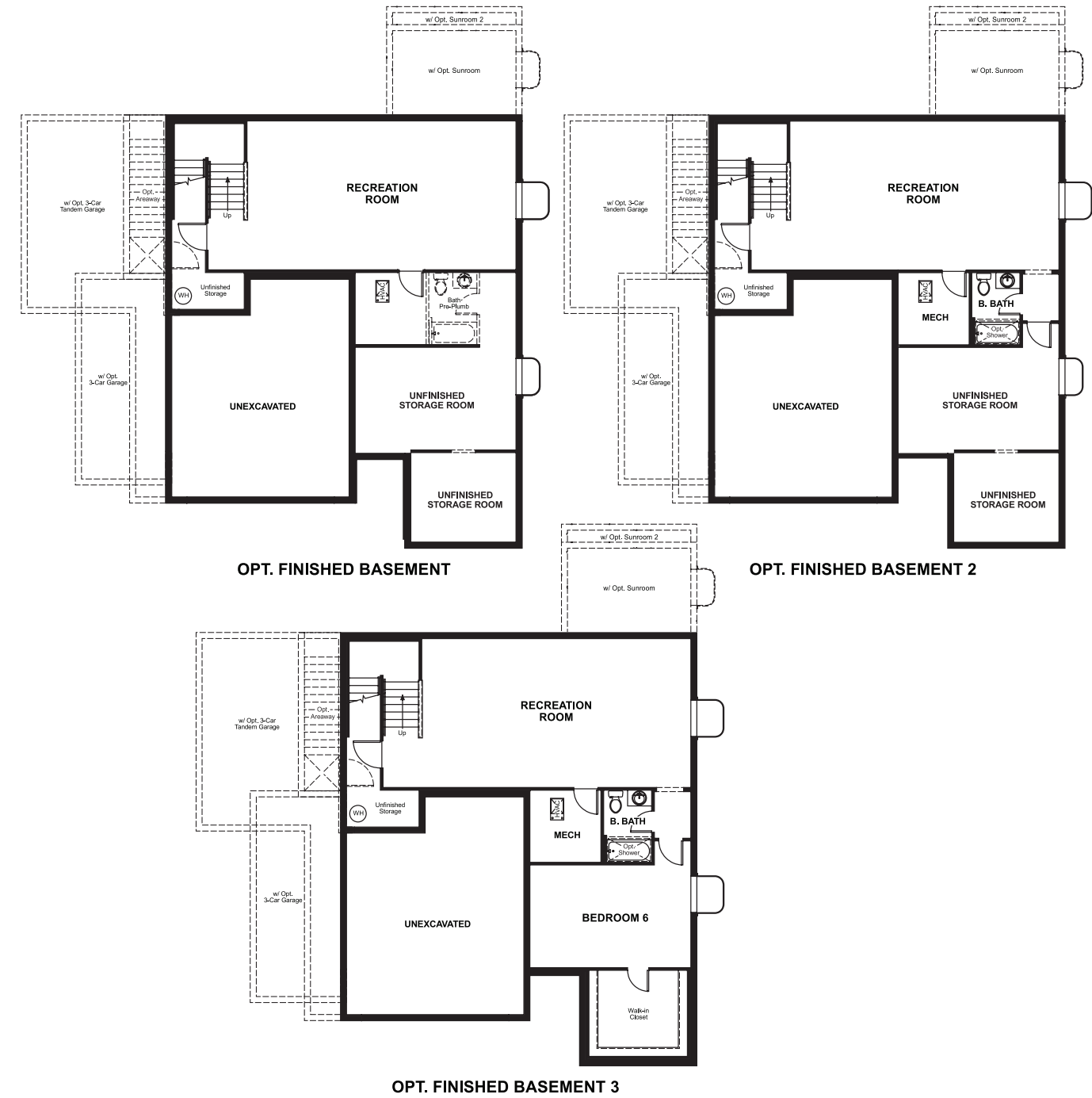


Shelton Woods
HOPEWELL

Approx. square feet: 2,650
Stories: 2
Bedrooms: 3 - 6

Garage: 2- to 3-car
Plan Number: M724

Floor Plan
Basement



COMMUNITY LOCATION
9 Elm Street
Stafford, VA 22554
888-891-7349

HOME GALLERY
11393 Government Center Parkway
Fairfax, VA 22030
888-891-7349

Shelton Woods
HOPEWELL

Approx. square feet: 2,650
Stories: 2
Bedrooms: 3 - 6
Garage: 2- to 3-car
Plan Number: M724

Love to entertain? The Hopewell's wide open great room and dining area are ideal for gathering with friends and family. The adjacent kitchen allows you to interact with guests without interrupting meal prep. Opt for a sunroom or covered patio for even more space to mingle. Upstairs, enjoy a loft, two guest rooms and a large master bedroom with a private bath and immense walk-in closet. Personalize with a tech center, bonus bedrooms, a deluxe master bath and more.



Elevation A

Available elevations:



Elevation A



Elevation B



Elevation C



Elevation D



Elevation E



Elevation F

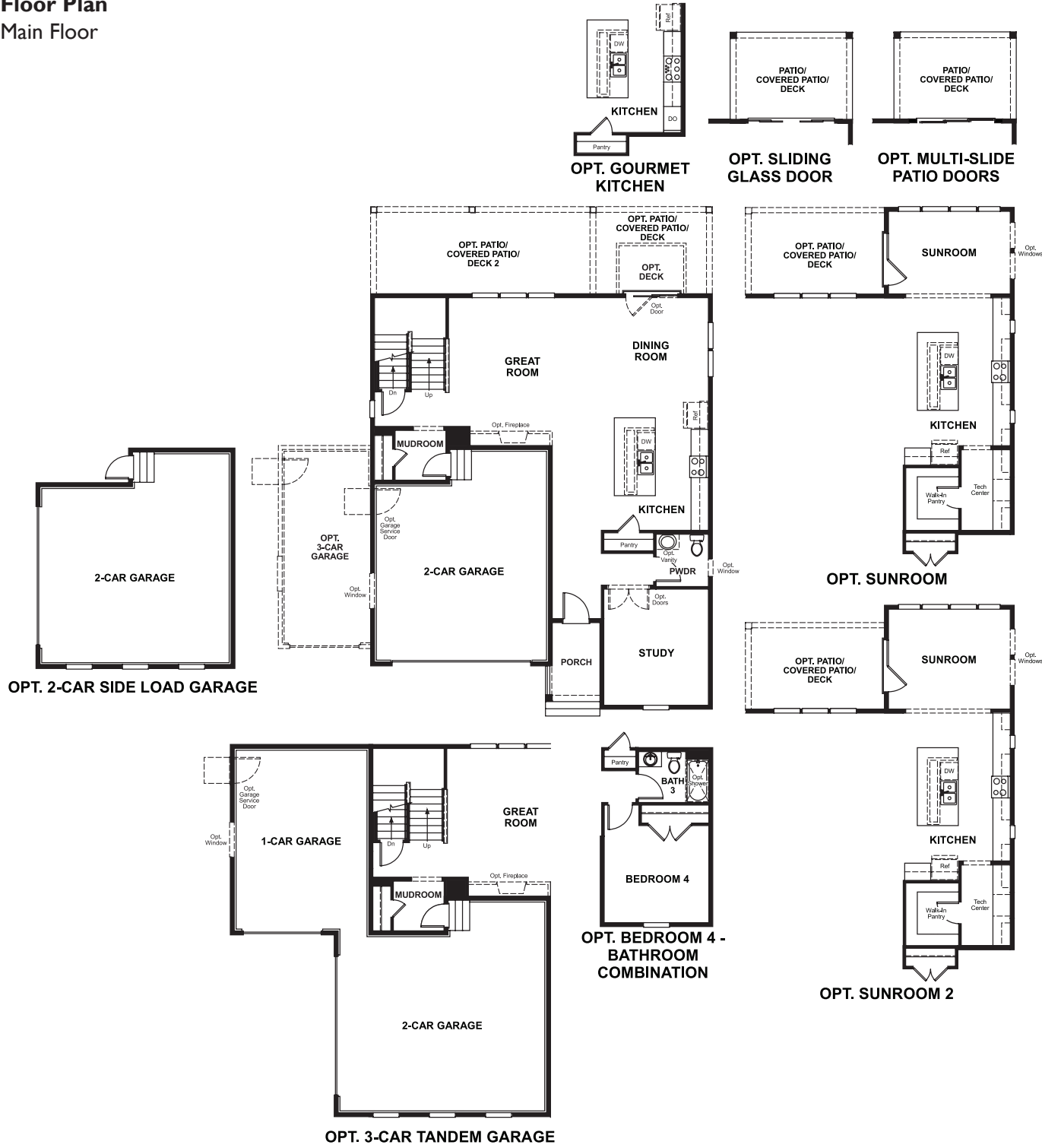
COMMUNITY LOCATION
9 Elm Street
Stafford, VA 22554
888-891-7349

HOME GALLERY
11393 Government Center Parkway
Fairfax, VA 22030
888-891-7349

Shelton Woods
HOPEWELL

Approx. square feet: 2,650
Stories: 2
Bedrooms: 3 - 6
Garage: 2- to 3-car
Plan Number: M724

Floor Plan
Main Floor



Floor Plan
Second Floor

