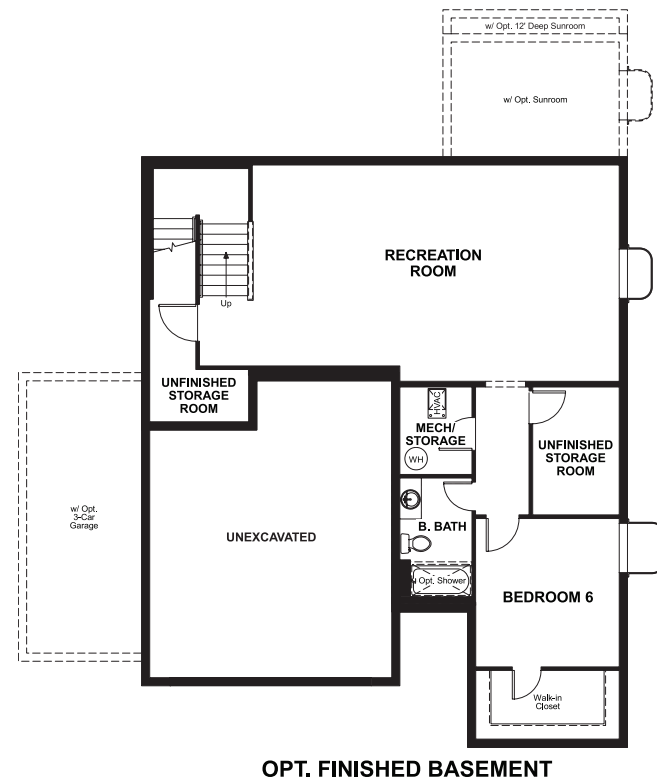


Anthology West
HOPEWELL

Approx. square feet: 2,650
Stories: 2
Bedrooms: 3 - 6

Garage: 2- to 3-car
Plan Number: D724

Floor Plan
Basement



Anthology West
HOPEWELL

Approx. square feet: 2,650
Stories: 2
Bedrooms: 3 - 6
Garage: 2- to 3-car
Plan Number: D724



Elevation A

Love to entertain? The Hopewell's wide open great room and dining area are ideal for gathering with friends and family. The adjacent kitchen allows you to interact with guests without interrupting meal prep. Opt for a sunroom or covered patio for even more space to mingle. Upstairs, enjoy a loft, two guest rooms and a large master bedroom with a private bath and immense walk-in closet. Personalize with a tech center, bonus bedrooms, a deluxe master bath and more.

Available elevations:



Elevation A



Elevation B



Elevation C



Elevation D



Elevation E

COMMUNITY LOCATION

North Motesbocker Road & Keyser Creek Avenue
Parker, CO 80134
303-850-5750

HOME GALLERY

8000 East Belleview Avenue, Suite C-12
Greenwood Village, CO 80111
888-402-4663



COMMUNITY LOCATION

North Motesbocker Road & Keyser Creek Avenue
Parker, CO 80134
303-850-5750

HOME GALLERY

8000 East Belleview Avenue, Suite C-12
Greenwood Village, CO 80111
888-402-4663

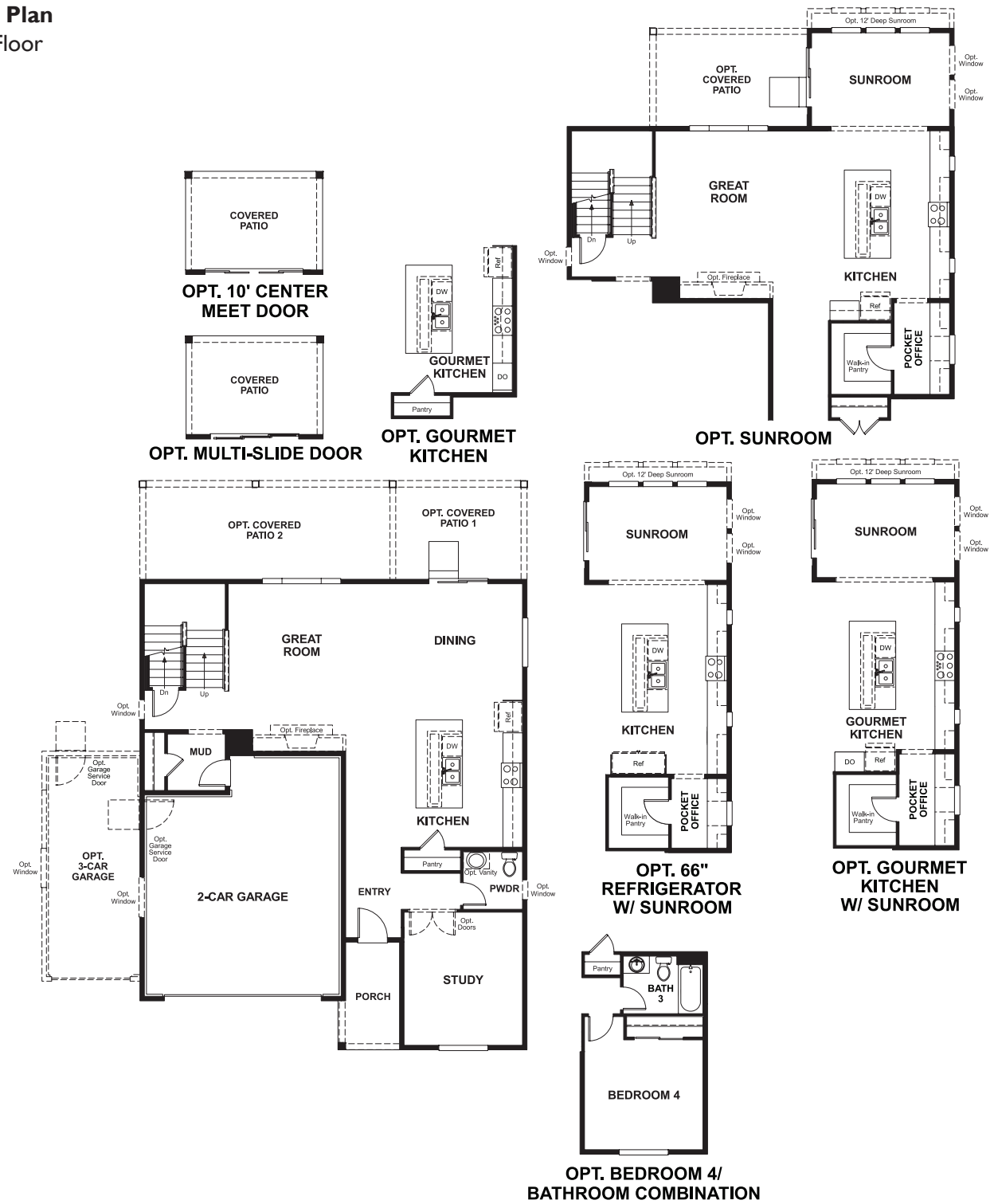


Anthology West
HOPEWELL

Approx. square feet: 2,650
Stories: 2
Bedrooms: 3 - 6

Garage: 2- to 3-car
Plan Number: D724

Floor Plan
Main Floor



Floor Plan
Second Floor

