

HUNTER



Elevation A

Approx. square feet: 2,700

Stories: 1

Bedrooms: 3 - 4

Garage: 2- to 3-car

Plan Number: J27H

From the formal living room to the inviting great room and covered back patio, the ranch-style Hunter plan is perfect for relaxing and entertaining. Enjoy an elegant dining room, a gourmet kitchen with a center island, walk-in pantry and breakfast nook and a luxurious master suite with a spacious deluxe bath. Options for personalization include a professional kitchen, a study or extra bedroom in lieu of the living room and a second master suite.

Available elevations:



Elevation A



Elevation B



Elevation C - shown with opt. stone



Elevation D



Elevation E



Elevation F

HOME GALLERY
1560 Wells Road, Building A, Suite 105
Orange Park, FL 32073
1-800-221-3014



HOME GALLERY
1560 Wells Road, Building A, Suite 105
Orange Park, FL 32073
1-800-221-3014

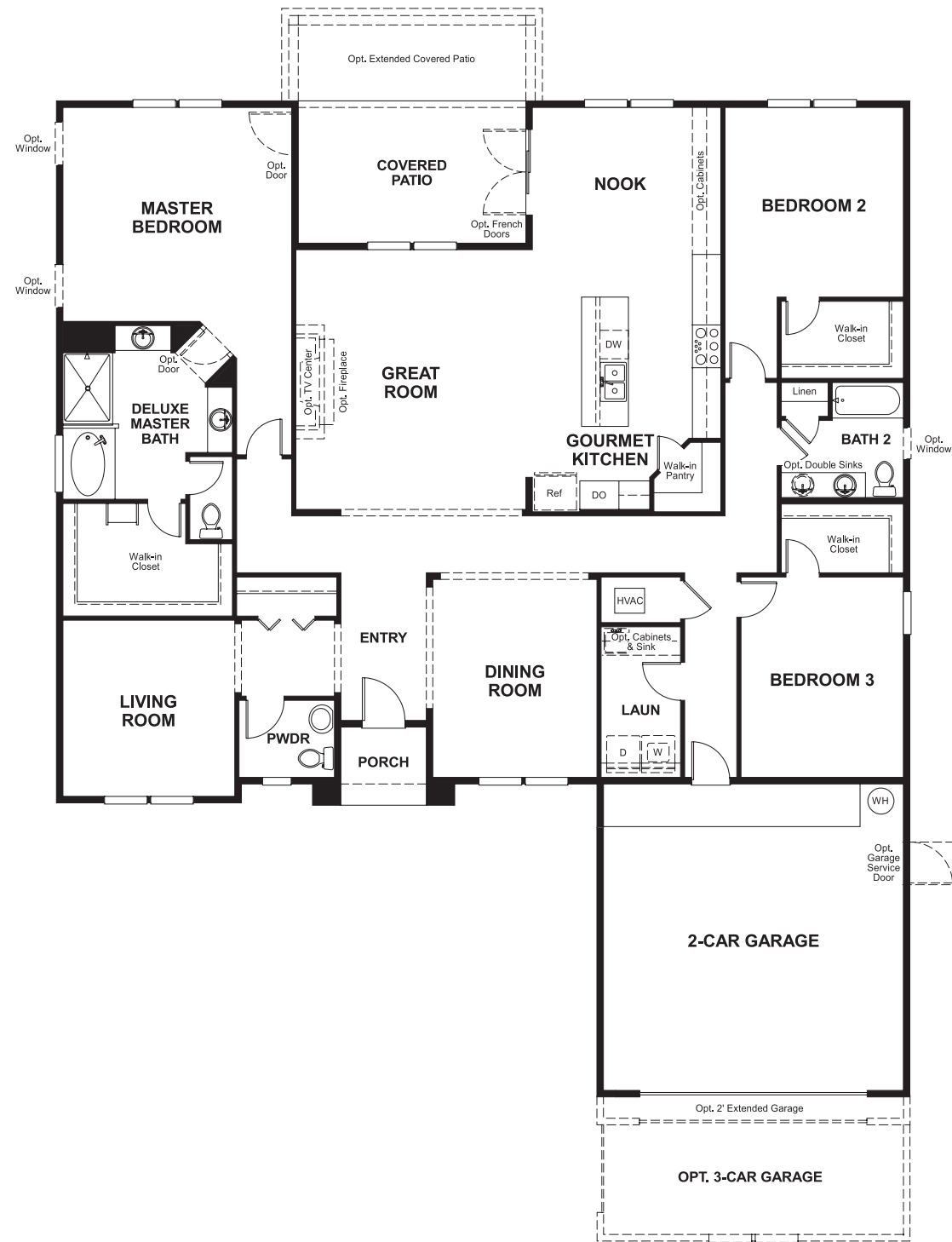


HUNTER

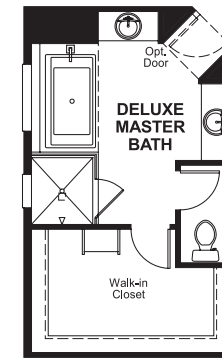
Approx. square feet: 2,700
Stories: 1
Bedrooms: 3 - 4

Garage: 2- to 3-car
Plan Number: J27H

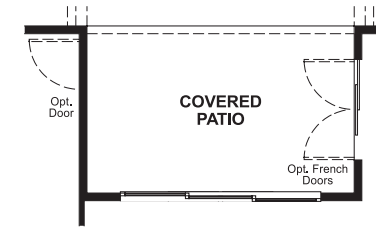
Floor Plan Main Floor



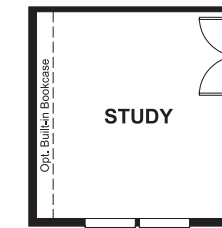
Floor Plan Main Floor Options



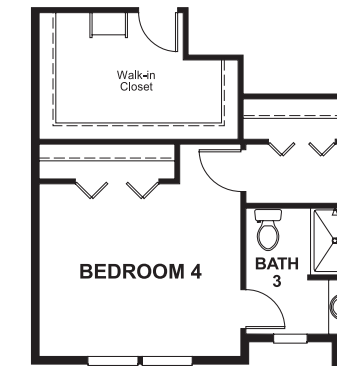
OPT. DELUXE
MASTER BATH 2



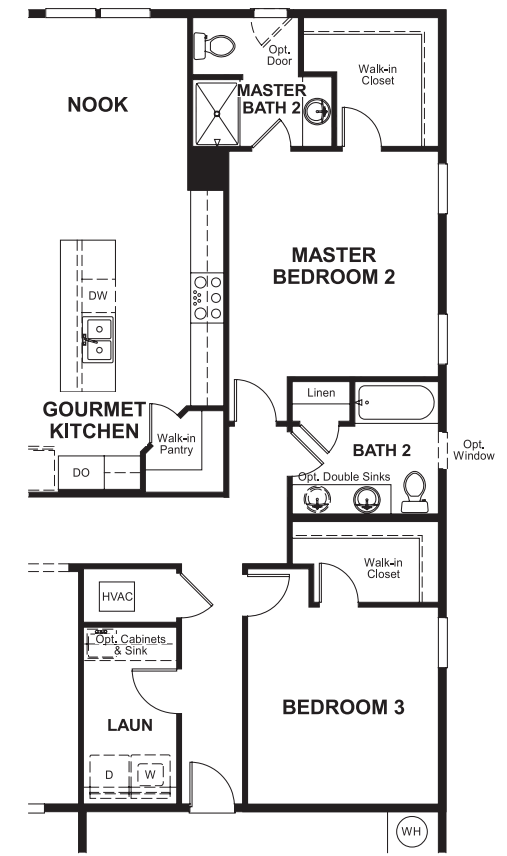
OPT. MULTI-SLIDE DOORS



OPT. STUDY



OPT. BEDROOM 4/
BATH 3



OPT. MASTER BEDROOM 2

**THIS PLAN'S PROJECTED
HERS® INDEX = 63***
Projected Rating Based on Plans – Field Confirmation Required

How does this floor plan rate?
Take a look: **100** = Standard new home* **130** = Typical resale home**
The lower the number, the better! Refer to the RESNET® HERS index brochure or go to www.RESNET.us for details.

What's a HERS® Index? HERS stands for Home Energy Rating System, a system created by RESNET® to measure home energy efficiency.[^]
A Projected HERS index or rating is a computer simulation performed prior to construction by a third-party HERS rater using RESNET-accredited rating software, rated feature and specification data derived from home plans, features and specifications, and other data selected or assumed by the rater. The projected HERS index is approximate and is subject to change without notice. Actual results will vary.

*This information is presented for education purposes only. The HERS index for a confirmed rating will be determined by a third-party HERS rater based on data gathered from on-site observations and, if required, testing of rated features for a home as featured, optioned, located, oriented and/or built.
+Standard new home is based on the RESNET® Reference Home definition with a HERS® index of 100 (based on the 2006 International Energy Conservation Code).
++Typical resale home is based on the U.S. Department of Energy definition with a HERS® index of 130.

[^]RESNET® has developed the HERS® index to indicate the comparative efficiencies of homes. It is no guarantee that energy efficiencies will be achieved.