

McKenna Park  
**INDIGO**



**Elevation A**

**Approx. square feet:** 1,600  
**Stories:** 2  
**Bedrooms:** 3  
**Garage:** 2-car  
**Plan Number:** S684

The inspired Indigo plan greets guests with a courtyard off the entry. Inside, you'll find an open-concept great room, dining room and kitchen, as well as a convenient powder bath. The second floor features three bedrooms, including a luxurious master suite offering a walk-in closet and a private bath with double sinks and a separate tub and shower.

**Available elevations:**



**Elevation A**



**Elevation B**



**Elevation C**

**COMMUNITY LOCATION**

6928 Ivy Drive  
 Chino, CA 91710  
 800-852-9714

**HOME GALLERY**

5171 California Avenue  
 Irvine, CA 92617  
 800-852-9714



**COMMUNITY LOCATION**

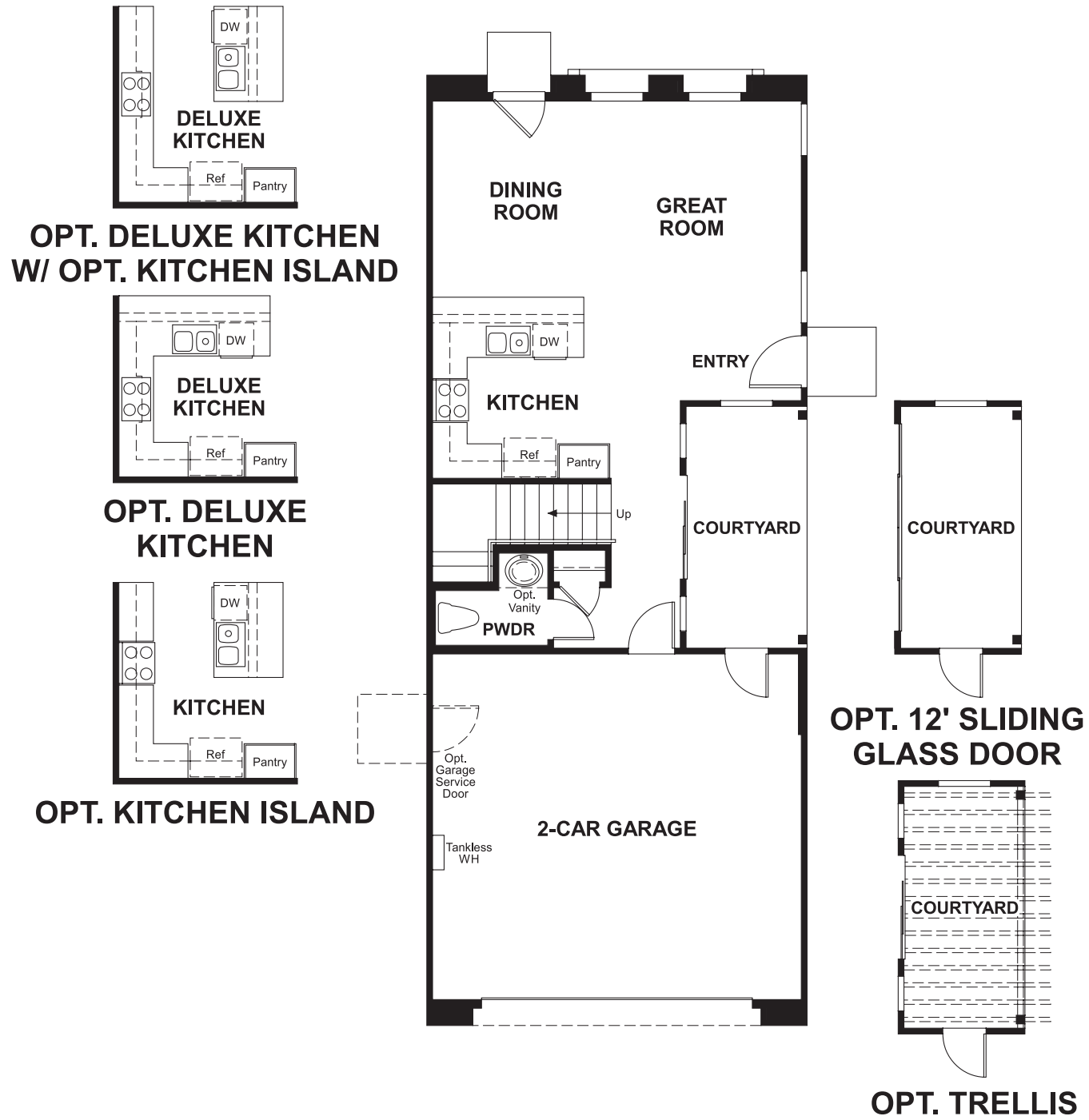
6928 Ivy Drive  
 Chino, CA 91710  
 800-852-9714

**HOME GALLERY**

5171 California Avenue  
 Irvine, CA 92617  
 800-852-9714



**Floor Plan**  
Main Floor



**Floor Plan**  
Second Floor

