

# ISAAC



**Elevation A**

**Approx. square feet:** 2,500

**Stories:** 1

**Bedrooms:** 3 - 4

**Garage:** 2- to 3-car

**Plan Number:** J249

The Isaac home plan offers all the rooms conveniently on one floor. The great room serves as the heart of the home and overlooks an elegant kitchen with ample cabinet space and breakfast nook. Owners will enjoy a private master suite with luxurious bath. Gourmet kitchen, study and a second master bedroom are optional.

**Available elevations:**



**Elevation A**



**Elevation B**



**Elevation C**



**Elevation C - shown with stone**

**HOME GALLERY**  
1560 Wells Road, Building A  
Orange Park, FL 32073  
800-221-3014



**HOME GALLERY**  
1560 Wells Road, Building A  
Orange Park, FL 32073  
800-221-3014

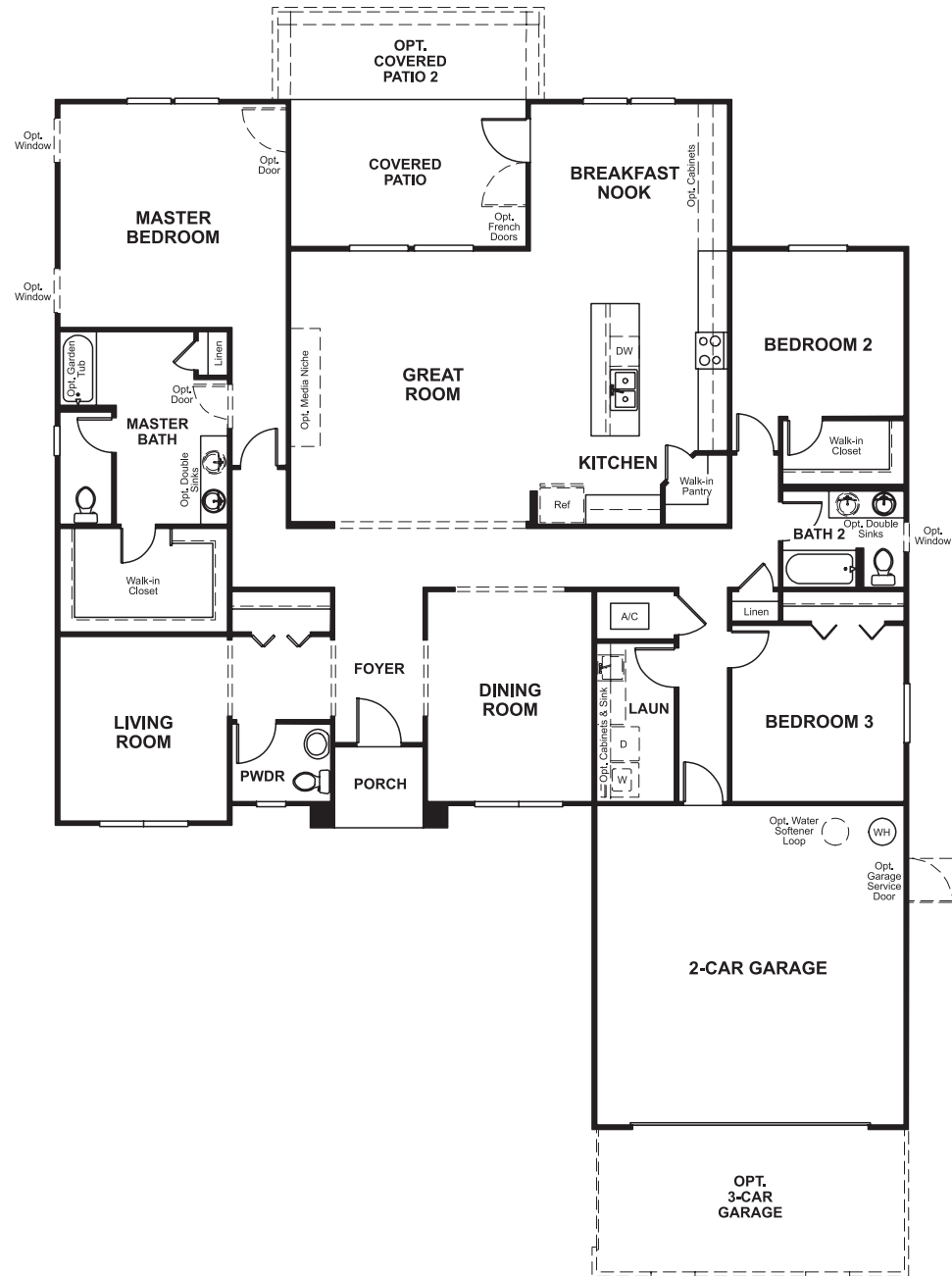


ISAAC

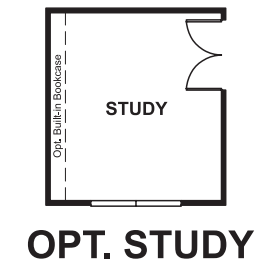
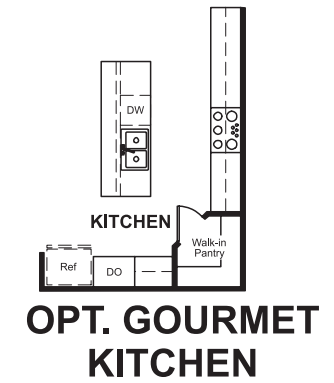
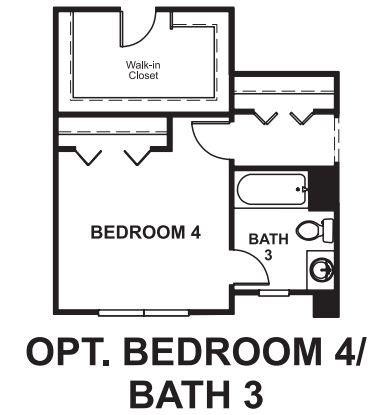
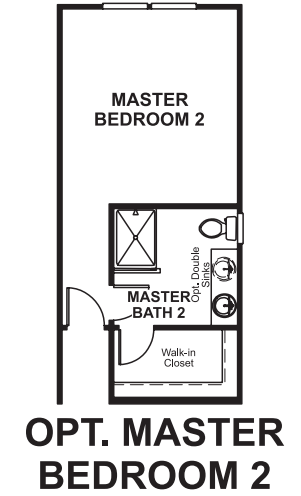
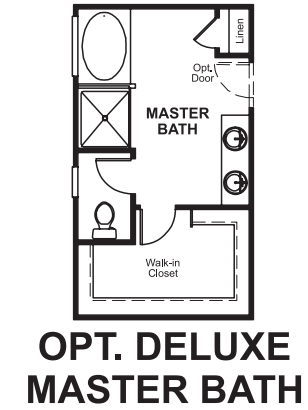
Approx. square feet: 2,500  
Stories: 1  
Bedrooms: 3 - 4

Garage: 2- to 3-car  
Plan Number: J249

Floor Plan  
Main Floor



Floor Plan  
Main Floor Options



**THIS PLAN'S PROJECTED  
HERS® INDEX = 64\***  
Projected Rating Based on Plans – Field Confirmation Required

**How does this floor plan rate?**  
Take a look: 100 = Standard new home\* 130 = Typical resale home\*\*  
The lower the number, the better! Refer to the RESNET® HERS index brochure or go to [www.RESNET.us](http://www.RESNET.us) for details.

**What's a HERS® Index?** HERS stands for Home Energy Rating System, a system created by RESNET® to measure home energy efficiency. A Projected HERS index or rating is a computer simulation performed prior to construction by a third-party HERS rater using RESNET-accredited rating software, rated feature and specification data derived from home plans, features and specifications, and other data selected or assumed by the rater. The projected HERS index is approximate and is subject to change without notice. Actual results will vary.

\*This information is presented for education purposes only. The HERS index for a confirmed rating will be determined by a third-party HERS rater based on data gathered from on-site observations and, if required, testing of rated features for a home as featured, optioned, located, oriented and/or built.  
+Standard new home is based on the RESNET® Reference Home definition with a HERS® index of 100 (based on the 2006 International Energy Conservation Code).  
\*\*Typical resale home is based on the U.S. Department of Energy definition with a HERS® index of 130.

^RESNET® has developed the HERS® index to indicate the comparative efficiencies of homes. It is no guarantee that energy efficiencies will be achieved.