

Calla Crest  
**IVY**

**Approx. square feet:** 2,850  
**Stories:** 2  
**Bedrooms:** 4 - 6

**Garage:** 2- to 3-car  
**Plan Number:** W288

Calla Crest  
**IVY**

**Site Map**



Map not drawn to scale.



**Elevation C**

**Available elevations:**



**Elevation C**



**Elevation E**

**Approx. square feet:** 2,850  
**Stories:** 2  
**Bedrooms:** 4 - 6  
**Garage:** 2- to 3-car  
**Plan Number:** W288

The Ivy offers the space of a traditional home, with a separate suite that includes a kitchenette, living room and private entry. The main part of the home offers a great room and a charming gourmet kitchen with breakfast nook and optional chef's features. Upstairs, you'll find a versatile loft and a lavish master suite with optional deluxe bath.

**COMMUNITY LOCATION**  
30125 61<sup>st</sup> Avenue South  
Auburn, WA 98001  
253-693-4800

**HOME GALLERY**  
20829 72<sup>nd</sup> Avenue South, Suite 115  
Kent, WA 98032  
253-446-7277

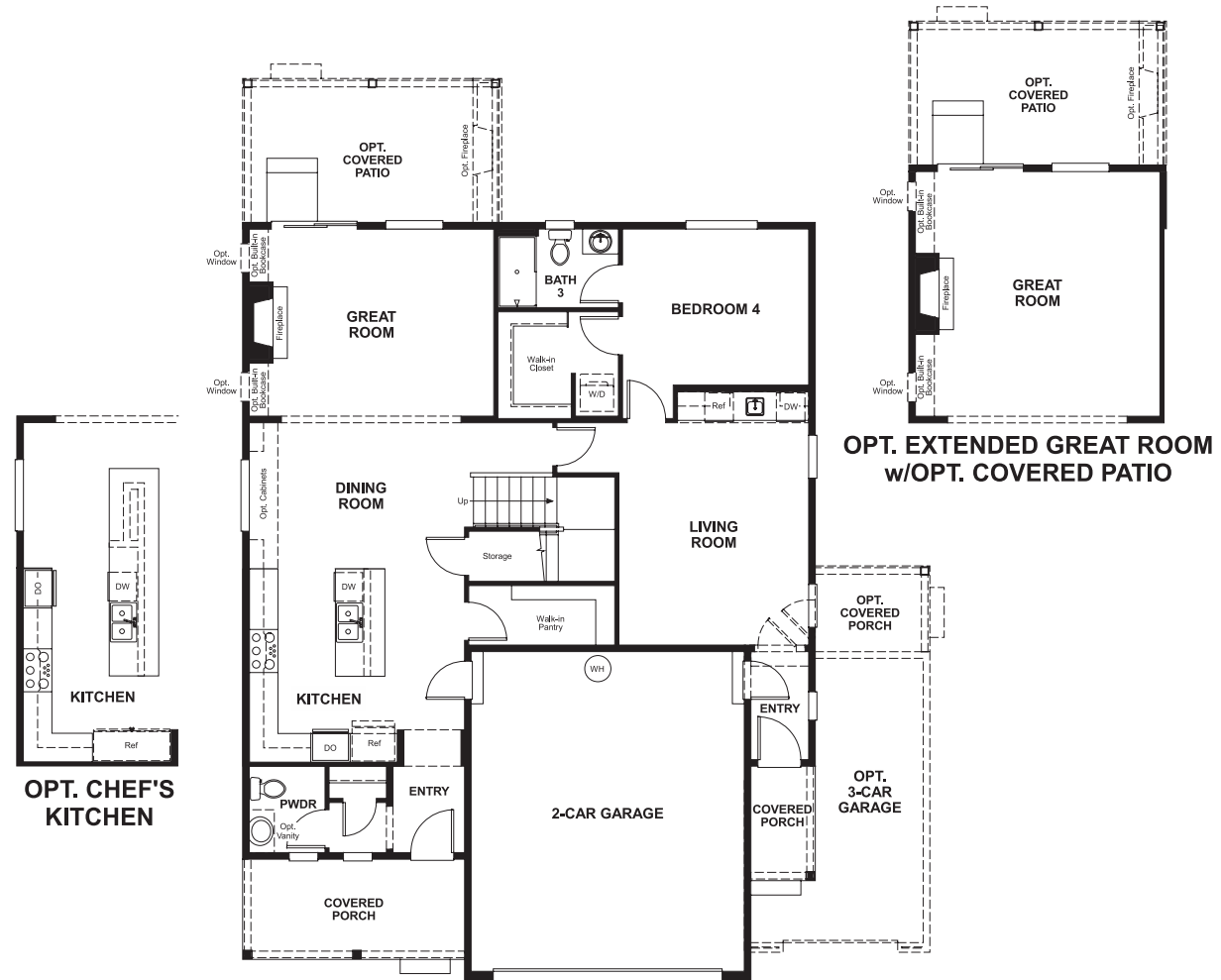


**COMMUNITY LOCATION**  
30125 61<sup>st</sup> Avenue South  
Auburn, WA 98001  
253-693-4800

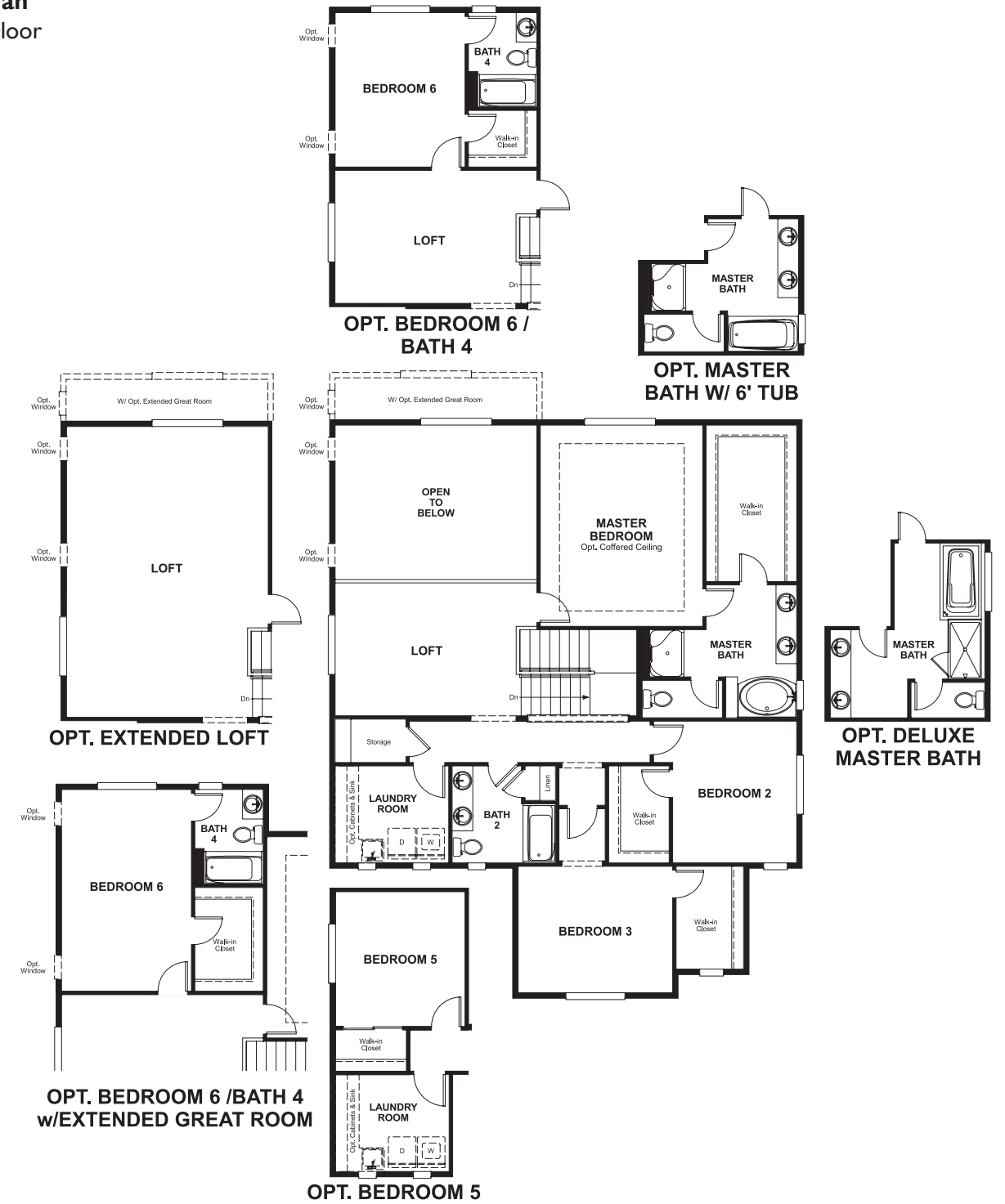
**HOME GALLERY**  
20829 72<sup>nd</sup> Avenue South, Suite 115  
Kent, WA 98032  
253-446-7277



**Floor Plan**  
Main Floor



**Floor Plan**  
Second Floor



**THIS PLAN'S PROJECTED  
HERS® INDEX = 65\***  
Projected Rating Based on Plans – Field Confirmation Required

**How does this floor plan rate?**  
Take a look: **100** = Standard new home\* **130** = Typical resale home\*\*  
The lower the number, the better! Refer to the RESNET® HERS index brochure or go to [www.RESNET.us](http://www.RESNET.us) for details.

**What's a HERS® Index?** HERS stands for Home Energy Rating System, a system created by RESNET® to measure home energy efficiency.<sup>^</sup>  
A Projected HERS index or rating is a computer simulation performed prior to construction by a third-party HERS rater using RESNET-accredited rating software, rated feature and specification data derived from home plans, features and specifications, and other data selected or assumed by the rater. The projected HERS index is approximate and is subject to change without notice. Actual results will vary.

\*This information is presented for education purposes only. The HERS index for a confirmed rating will be determined by a third-party HERS rater based on data gathered from on-site observations and, if required, testing of rated features for a home as featured, optioned, located, oriented and/or built.  
+Standard new home is based on the RESNET® Reference Home definition with a HERS® index of 100 (based on the 2006 International Energy Conservation Code).  
\*\*Typical resale home is based on the U.S. Department of Energy definition with a HERS® index of 130.

<sup>^</sup>RESNET® has developed the HERS® index to indicate the comparative efficiencies of homes. It is no guarantee that energy efficiencies will be achieved.