

Chapparal at The Ranch
JASMINE



Elevation A

Available elevations:



Elevation A



Elevation B



Elevation C

Approx. square feet: 3,350

Stories: 2

Bedrooms: 5

Garage: 3-car

Plan Number: S33D

The Jasmine plan greets guests with a wide covered front porch and front- and side-entry garages. Inside, you'll find a grand two-story entry, a formal living room and a spacious dining room that can be optioned as a private study. You'll also appreciate the convenient bedroom, open great room and well-appointed kitchen with center island and nook. Upstairs, enjoy four bedrooms, including a lavish master suite with a sitting room. Options include a gourmet kitchen, roomy loft and covered patio.

COMMUNITY LOCATION

22744 Rolling Brook Lane
Wildomar, CA 92595
800-852-9714

HOME GALLERY

5171 California Avenue
Irvine, CA 92617
800-852-9714



COMMUNITY LOCATION

22744 Rolling Brook Lane
Wildomar, CA 92595
800-852-9714

HOME GALLERY

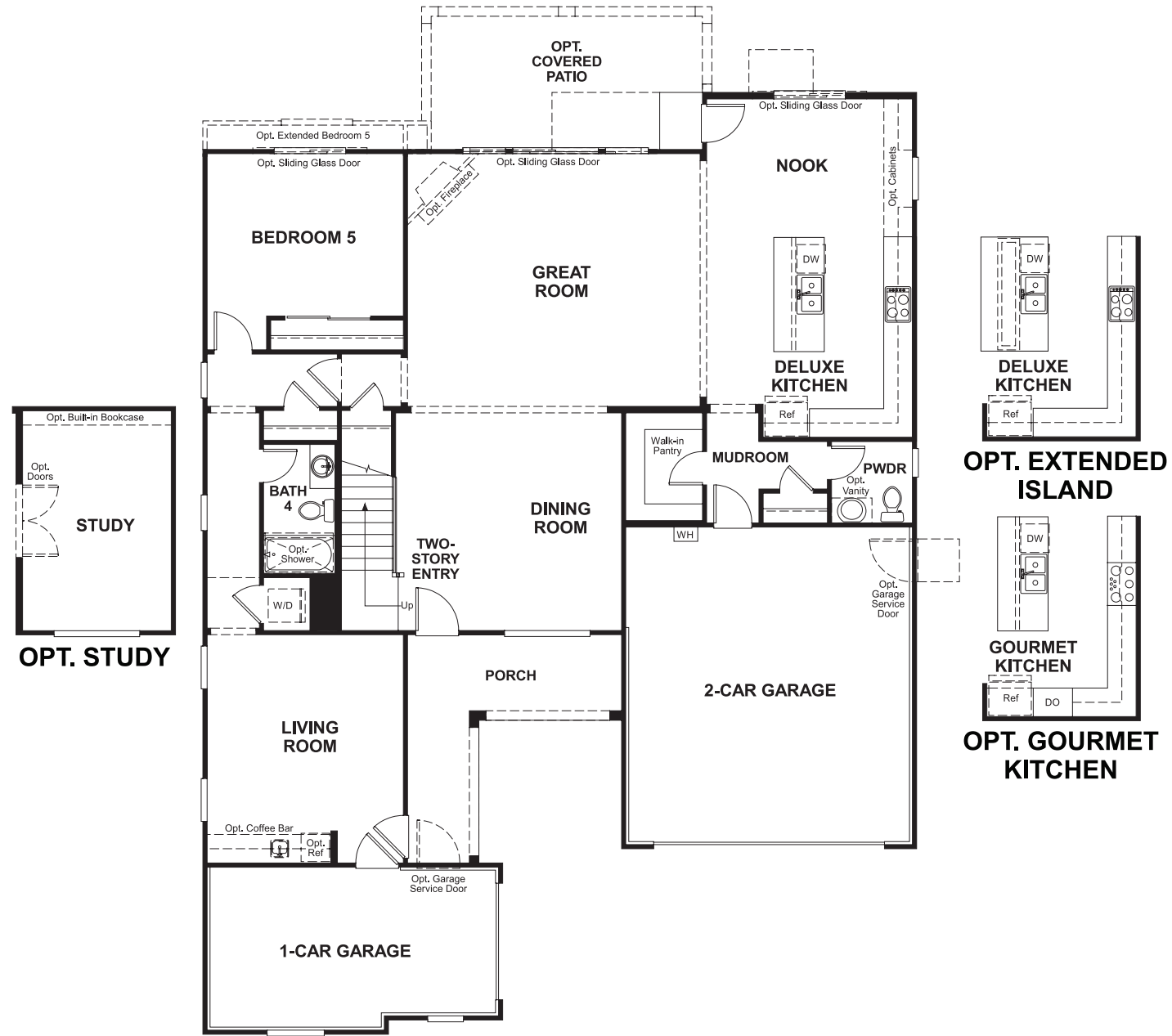
5171 California Avenue
Irvine, CA 92617
800-852-9714

Chapparral at The Ranch
JASMINE

Approx. square feet: 3,350
Stories: 2
Bedrooms: 5

Garage: 3-car
Plan Number: S33D

Floor Plan
Main Floor



Floor Plan
Second Floor

