

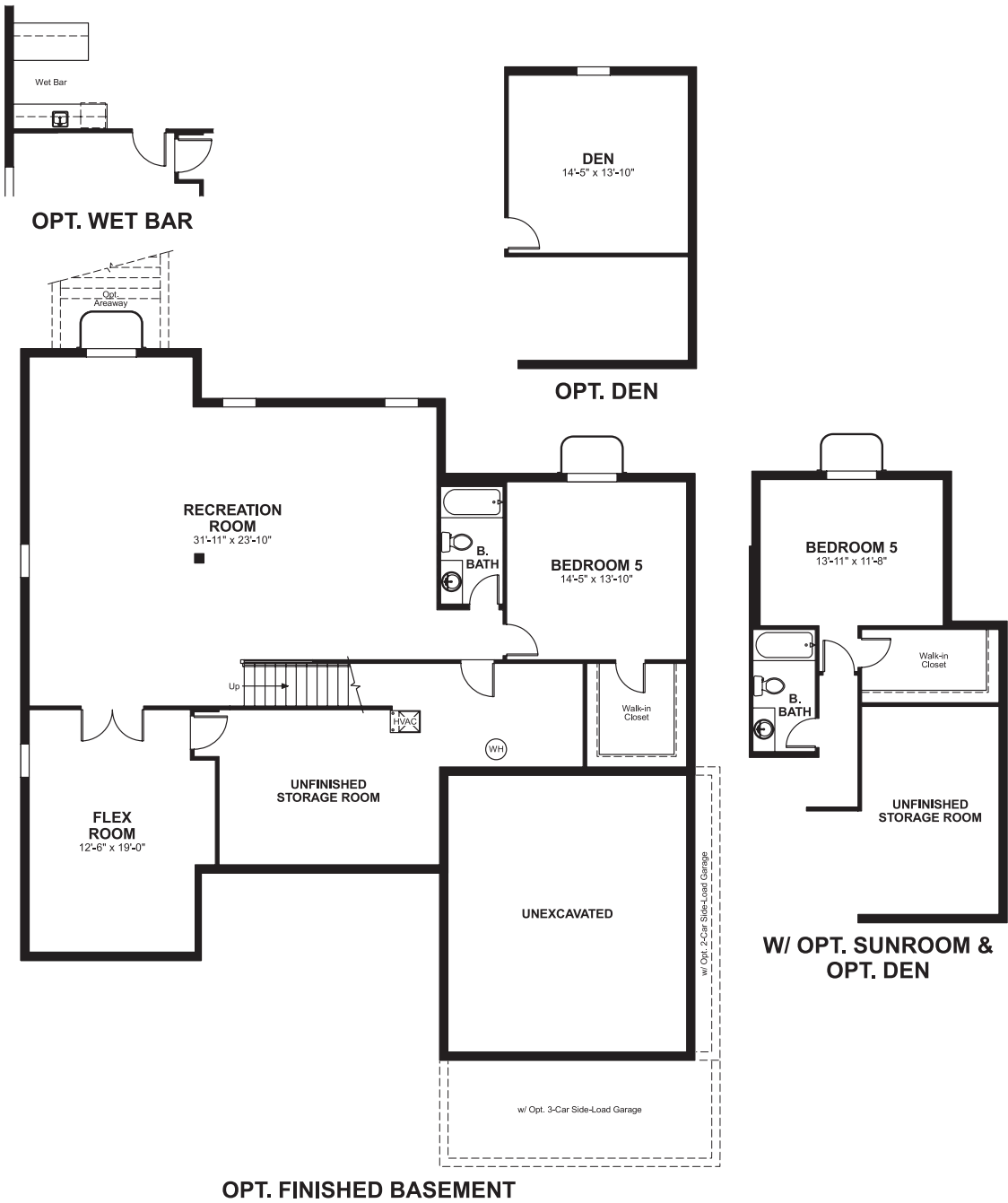
Berryville Glen  
**JESSICA**

**Approx. square feet:** 2,950  
**Stories:** 2  
**Bedrooms:** 3 - 4

**Garage:** 2-car  
**Plan Number:** M290

Berryville Glen  
**JESSICA**

**Floor Plan**  
Basement



**Elevation A**

**Available elevations:**



**Elevation A**



**Elevation B**



**Elevation C**



**Elevation D**



**Elevation E**



**Elevation F**

**Approx. square feet:** 2,950  
**Stories:** 2  
**Bedrooms:** 3 - 4  
**Garage:** 2-car  
**Plan Number:** M290

Highlights of the Jessica plan include a main floor master bedroom, an elegant dining room and two-story family room adjacent to a spacious kitchen. Opt for a private study in lieu of the living room. The owner's suite features a lavish bath and walk-in closet.

**COMMUNITY LOCATION**  
700 McGuire Circle  
Berryville Glen, VA 22611  
540-548-4435

**HOME GALLERY**  
11393 Government Center Parkway  
Fairfax, VA 22030  
888-891-7349



**FPO** Example is based on a sales price of \$280,000 and a 30-year fixed-rate FHA loan with an interest rate of 3.75% and a 3.5% down payment. The total loan amount, including the upfront mortgage insurance premium, is \$272,902. Monthly principal and interest payment = \$1,263.85. APR = 4.70%. Taxes, hazard insurance and monthly mortgage insurance premiums are not calculated in the above payment and actual payment will be higher. Program is available to owner occupants only and is subject to availability, a debt-to-income ratio of 43% or less, maximum 96.5% loan-to-value ratio, qualification using full documentation and a minimum FICO score of 640. Interest rate is not guaranteed and is subject to change without notice. ©2014 Richmond American Homes; Richmond American Homes of Maryland, Inc., MHBR #299; Richmond American Homes of Pennsylvania, Inc. 12/12/2014

**COMMUNITY LOCATION**  
700 McGuire Circle  
Berryville Glen, VA 22611  
540-548-4435

**HOME GALLERY**  
11393 Government Center Parkway  
Fairfax, VA 22030  
888-891-7349



**FPO** Example is based on a sales price of \$280,000 and a 30-year fixed-rate FHA loan with an interest rate of 3.75% and a 3.5% down payment. The total loan amount, including the upfront mortgage insurance premium, is \$272,902. Monthly principal and interest payment = \$1,263.85. APR = 4.70%. Taxes, hazard insurance and monthly mortgage insurance premiums are not calculated in the above payment and actual payment will be higher. Program is available to owner occupants only and is subject to availability, a debt-to-income ratio of 43% or less, maximum 96.5% loan-to-value ratio, qualification using full documentation and a minimum FICO score of 640. Interest rate is not guaranteed and is subject to change without notice. ©2014 Richmond American Homes; Richmond American Homes of Maryland, Inc., MHBR #299; Richmond American Homes of Pennsylvania, Inc. 12/12/2014

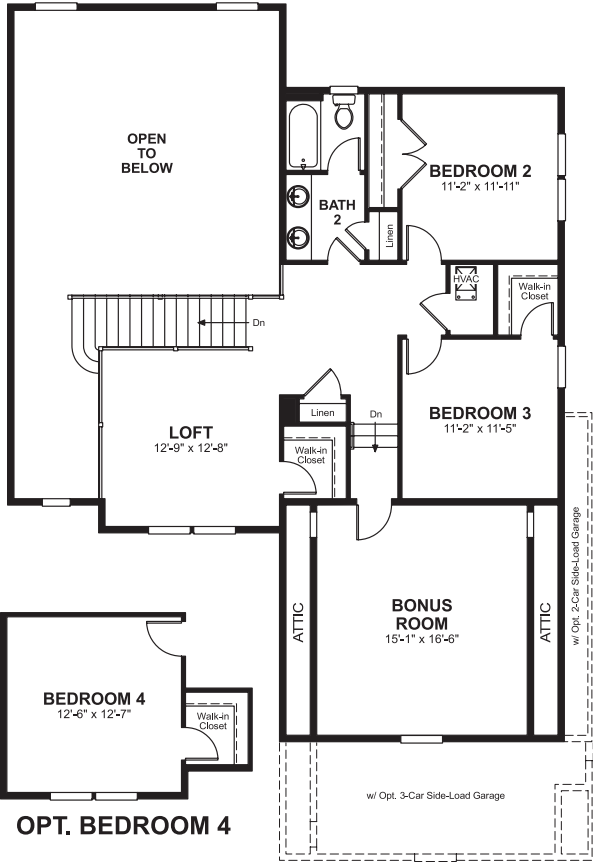
Berryville Glen  
**JESSICA**

**Approx. square feet:** 2,950  
**Stories:** 2  
**Bedrooms:** 3 - 4  
**Garage:** 2-car  
**Plan Number:** M290

**Floor Plan**  
First Floor



**Floor Plan**  
Second Floor



**FPO** Example is based on a sales price of \$280,000 and a 30-year fixed-rate FHA loan with an interest rate of 3.75% and a 3.5% down payment. The total loan amount, including the upfront mortgage insurance premium, is \$272,902. Monthly principal and interest payment = \$1,263.85. APR = 4.70%. Taxes, hazard insurance and monthly mortgage insurance premiums are not calculated in the above payment and actual payment will be higher. Program is available to owner occupants only and is subject to availability, a debt-to-income ratio of 43% or less, maximum 96.5% loan-to-value ratio, qualification using full documentation and a minimum FICO score of 640. Interest rate is not guaranteed and is subject to change without notice. ©2014 Richmond American Homes; Richmond American Homes of Maryland, Inc., MHBR #299; Richmond American Homes of Pennsylvania, Inc. 12/12/2014

**FPO** Example is based on a sales price of \$280,000 and a 30-year fixed-rate FHA loan with an interest rate of 3.75% and a 3.5% down payment. The total loan amount, including the upfront mortgage insurance premium, is \$272,902. Monthly principal and interest payment = \$1,263.85. APR = 4.70%. Taxes, hazard insurance and monthly mortgage insurance premiums are not calculated in the above payment and actual payment will be higher. Program is available to owner occupants only and is subject to availability, a debt-to-income ratio of 43% or less, maximum 96.5% loan-to-value ratio, qualification using full documentation and a minimum FICO score of 640. Interest rate is not guaranteed and is subject to change without notice. ©2014 Richmond American Homes; Richmond American Homes of Maryland, Inc., MHBR #299; Richmond American Homes of Pennsylvania, Inc. 12/12/2014